



SINTON  
ANDREWS

SINTON  
ANDREWS

£815,000 Freehold  
BRUNSWICK ROAD, EALING, W5 1AJ





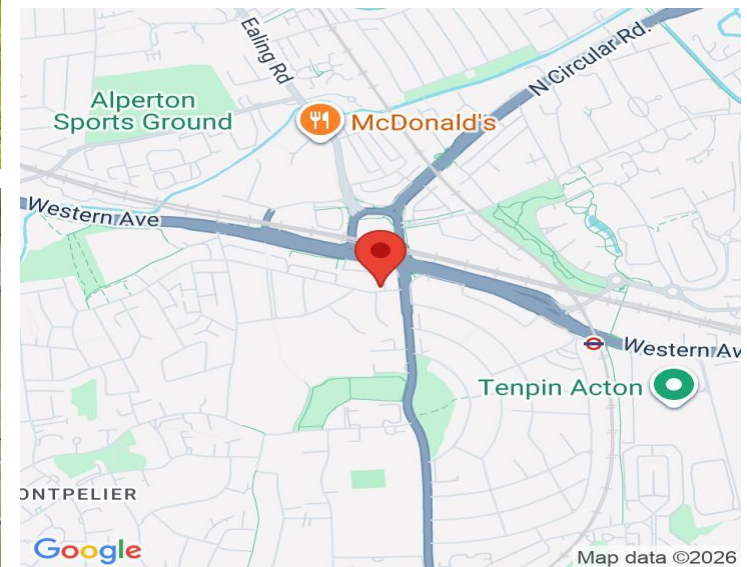
**A DECEPTIVELY SPACIOUS WELL-APPOINTED 1930'S-BUILT FAMILY HOME CLOSE TO HANGER LANE STATION.**

Brunswick Road forms part of the ever-popular and conveniently located Greystoke Estate. The area is ideally positioned for access to Hanger Lane and Park Royal stations, offering both Central and Piccadilly Line services, as well as multiple excellent local bus routes. For motorists, there is easy access to the A40, while the open spaces of Hanger Hill Park are also close by.

This charming three-bedroom semi-detached family home offers two well-proportioned reception rooms, a family bathroom and downstairs WC. The property features a generous garden, a garage, potential for rear access and hardstanding providing off-street parking. While the house has been well maintained over the years, it would now benefit from some updating and offers excellent potential for extension, subject to the usual planning consent.

**COUNCIL TAX BAND: F**

**EPC Rating:TBC**



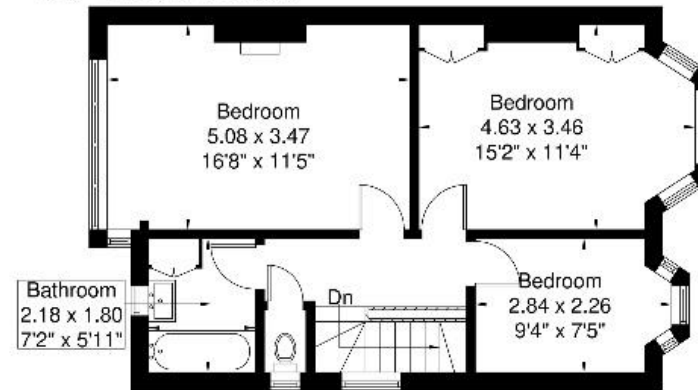
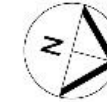
 [www.sintonandrews.com](http://www.sintonandrews.com)  
020 8566 1990

# Brunswick Road

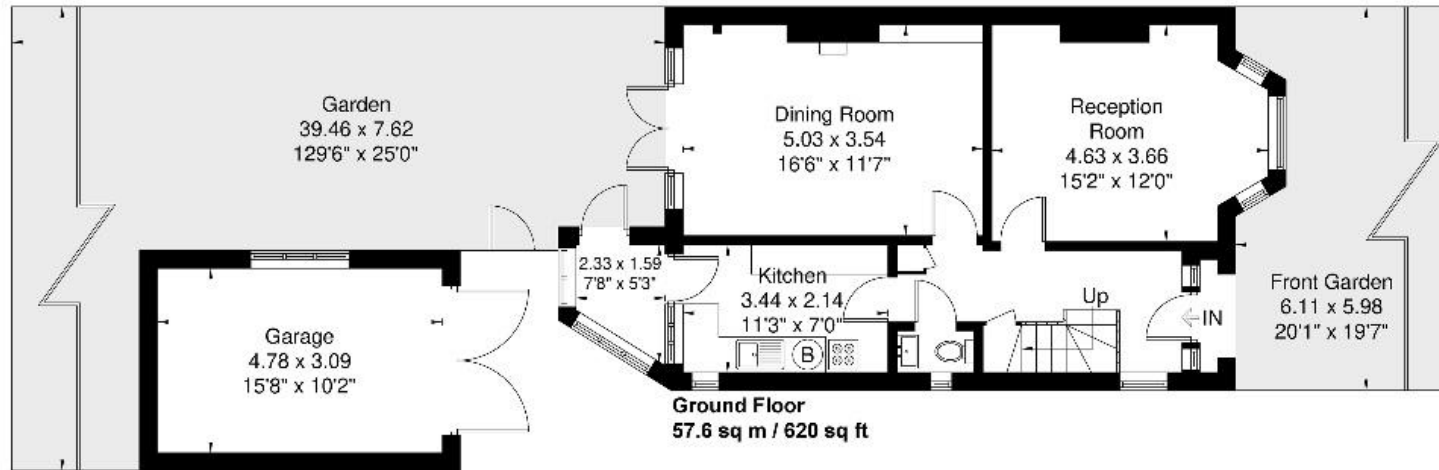
Approximate Gross Internal Area = 112.2 sq m / 1207 sq ft

Garage = 14.8 sq m / 159 sq ft

Total = 127 sq m / 1366 sq ft



**First Floor**  
54.6 sq m / 587 sq ft



**Ground Floor**  
57.6 sq m / 620 sq ft

**Garage**  
14.8 sq m / 159 sq ft

Although every attempt has been made to ensure accuracy, all measurements are approximate. The floorplan is for illustrative purposes only and not to scale.

© www.perspective.co.uk

020 8566 1990

8 Spring Bridge Road, Ealing, London W5 2AA

SINTONANDREWS.COM

