

## Dukes Avenue, N10

£875,000

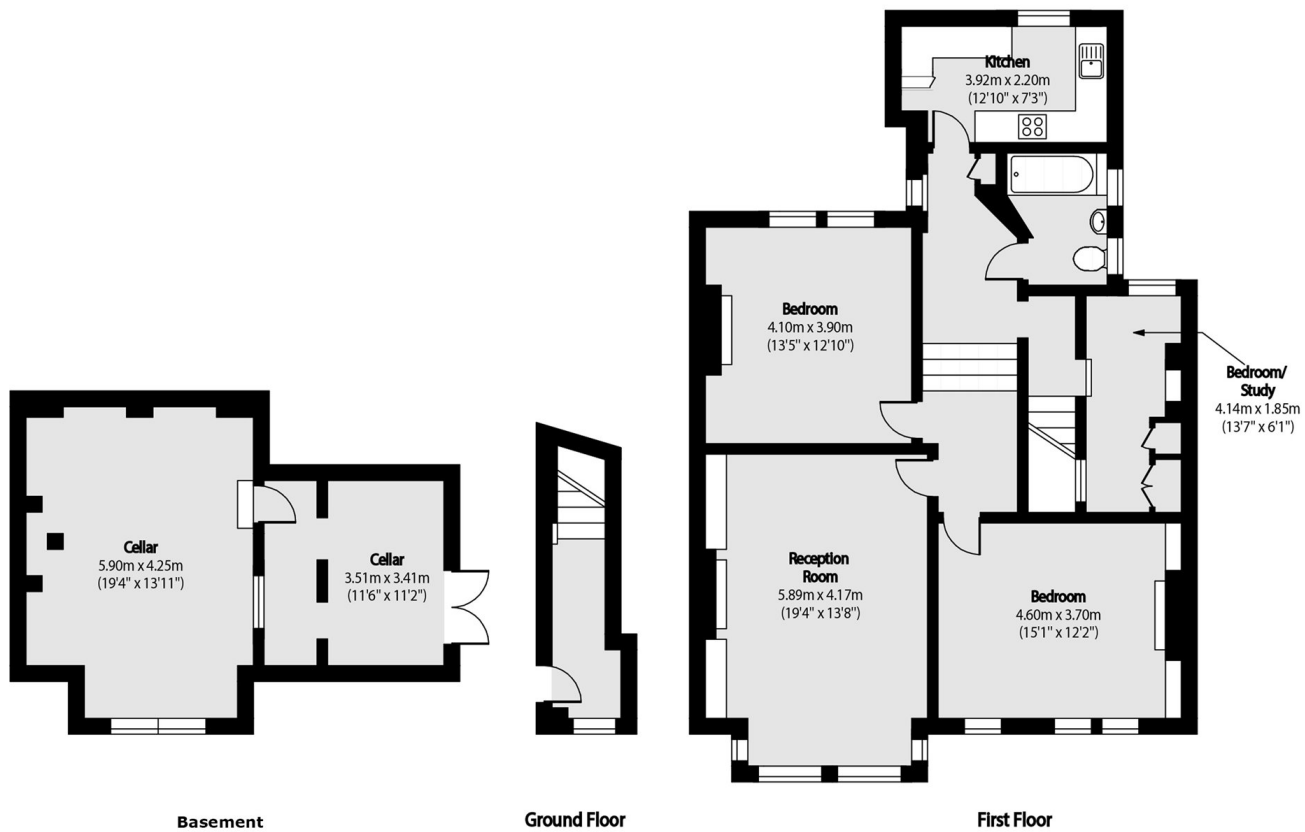
This bright and spacious three bedroom first floor flat set within a double fronted Edwardian house. Features include a separate kitchen, modern bathroom, and period charm with high ceilings, sash windows, and fireplaces. Further benefits include a large cellar with development potential, off-street parking, and approved planning permission for a loft conversion.

Located in the sought after Dukes Avenue, across the street from Alexandra Park and Palace green spaces within minutes of Muswell Hill Broadway and its excellent selection of shops, restaurants and bus services to Highgate tube (Northern Line).

### Features

- First Floor
- Three Bedrooms
- Off Street Parking
- Share Of Freehold
- Potential To Extend (STPP)
- Large Cellar

# Dukes Avenue, LONDON, N10



Total area (approx): 139.3 sqm (1499.4 sq.ft)