



5 Bury Hill Farm Upper Clatford, Andover, SP11 7PS
Price Guide £695,000



5 Bury Hill Farm Upper Clatford, Andover, Price Guide £695,000

PROPERTY DESCRIPTION BY Mr Wayne Turpin

Bury Hill Farm is an exclusive development featuring five beautifully converted barns and three newly built homes, all set within a charming courtyard setting. Originally constructed and meticulously converted by local builders in 1997, this development boasts high-quality craftsmanship and character.

No. 5 is a spacious split-level home spread over several floors, offering a truly unique and versatile living space. At its heart is a bright and airy open-plan kitchen, dining, and family room—perfect for modern living. The ground floor features a cozy living room with a log-burning stove, a utility room.

The upper floors accommodate three generous double bedrooms, including a principal suite with an en-suite bathroom, second en-suite, study/bedroom four plus a stylish family shower room.

Outside, the property benefits from a well stocked and landscaped rear garden, ideal for outdoor relaxation and a driveway provides parking for several cars and leads to the garage. NO CHAIN.



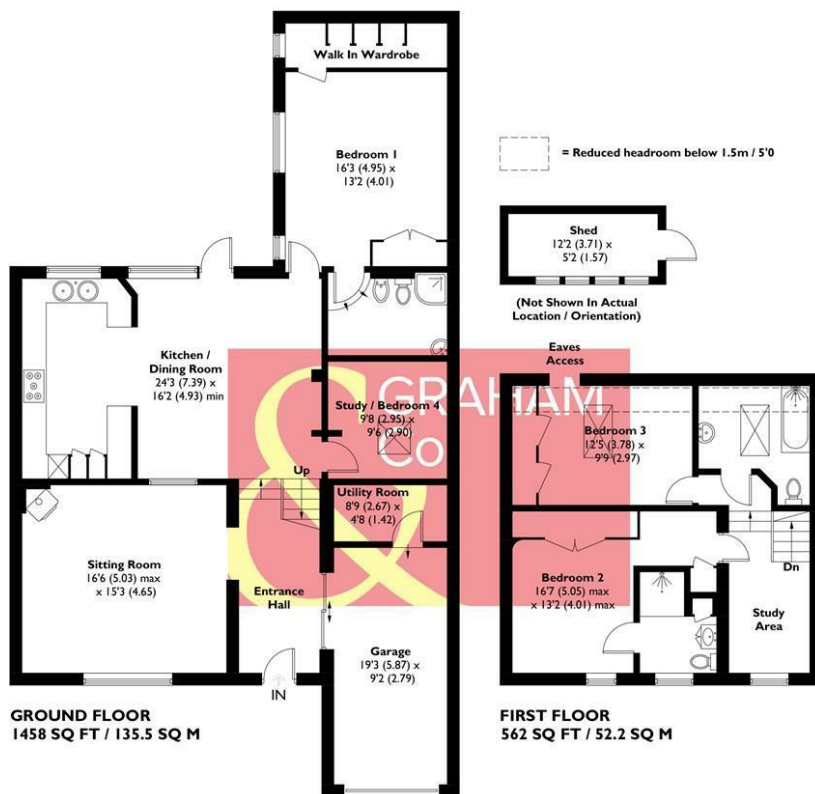


Upper Clatford is an extremely picturesque village situated in the Anton Valley. There are a wealth of thatched cottages all set within a convenient location close to open countryside, Andover Town and the A303. The village has an attractive thatched pub, beautiful and tranquil 12th century church set beside a water meadow and thriving village hall with numerous community groups. Nearby Goodworth Clatford has a village primary school and popular village store.





**APPROXIMATE GROSS INTERNAL AREA = 2020 SQ FT / 187.7 SQ M
(INCLUDING GARAGE)
SHED = 61 SQ FT / 5.7 SQ M
TOTAL = 2081 SQ FT / 193.4 SQ M**



This plan is for layout guidance only. Not drawn to scale unless stated. Windows and door openings are approximate. Whilst every care is taken in the preparation of this plan, please check all dimensions, shapes and compass bearings before making any decisions reliant upon them. Created by Emzo Marketing (ID1302213)
Produced for Graham & Co

**MORTGAGE ADVICE
Across The Market Mortgages**

An independent Mortgage brokerage offering expert advice from across the whole market. Whether you are a first-time buyer, home mover, remortgaging or buying a Buy-To-Let investment. Tristan can provide expert & reliable advice, in a clear jargon free language. Book a free consultation today.

E - tristan@atmmortgages.com M - 07545320380 www.atmmortgages.com

Energy Efficiency Rating		
	Current	Potential
Very energy efficient - lower running costs		
(95 plus) A		
(81-91) B		
(69-80) C	69	74
(55-68) D		
(39-54) E		
(21-38) F		
(1-20) G		
Not energy efficient - higher running costs		
England & Wales EU Directive 2002/91/EC		

Tax Band: G



OPEN 7 DAYS

If you are considering selling your home please contact us today for your free no obligation valuation

01264 356500

IMPORTANT: we would like to inform prospective purchasers that these sales particulars have been prepared as a general guide only. A detailed survey has not been carried out, nor the services, appliances and fittings tested. Room sizes should not be relied upon for furnishing purposes and are approximate. If floor plans are included, they are for guidance only and illustration purposes only and may not be to scale. If there are any important matters likely to affect your decision to buy, please contact us before viewing the property.

