

KEYSTONE

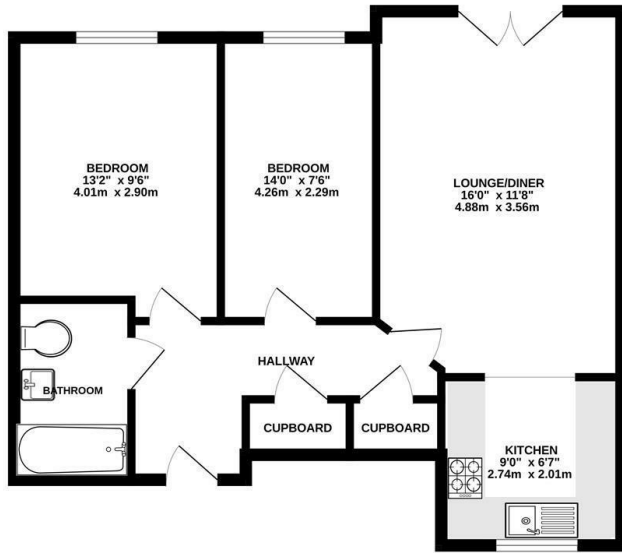


Demoiselle Crescent, Ipswich, IP3 9UE

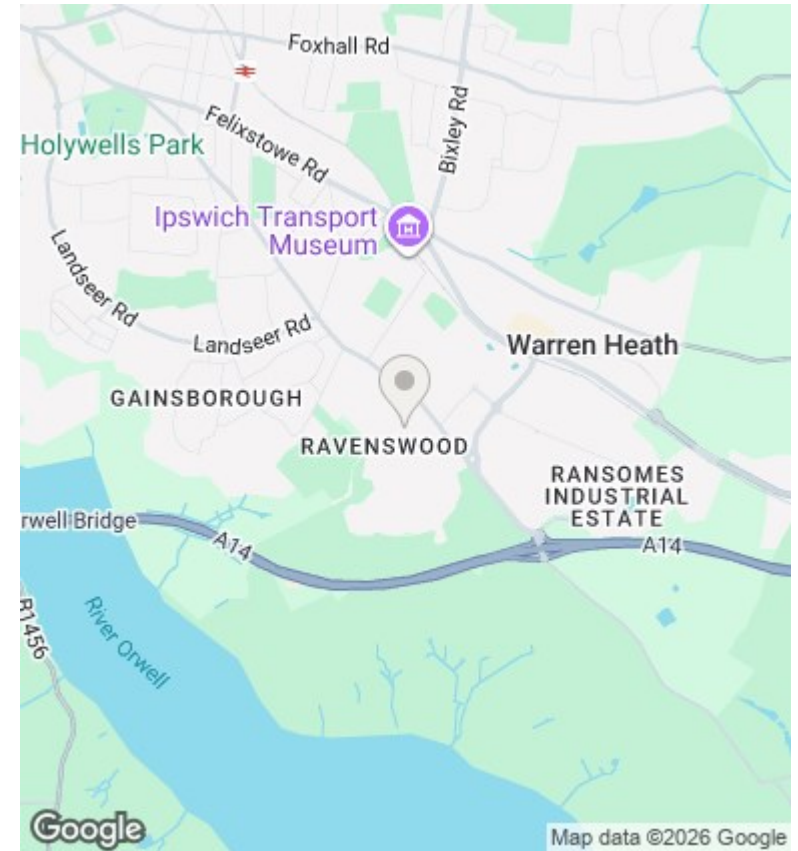
£995 Per Month

- Unfurnished First Floor Apartment
- Kitchen
- EPC Rating B
- Two Bedrooms
- Bathroom
- Lounge
- Parking

GROUND FLOOR



While every effort has been made to ensure the accuracy of the description contained here, measurements of doors, windows, rooms and any other items are approximate and no responsibility is taken for any error, omission or misstatement. This plan is for illustrative purposes only and should be used as such by any prospective purchaser. The fixtures, systems and appliances shown have not been tested and no guarantee as to their operability or efficiency can be given.
Made with Metreplan ©2024



Directions

Viewings

Viewings by arrangement only. Call 01473 221 399 to make an appointment.

EPC Rating:

B

Energy Efficiency Rating		
	Current	Potential
Very energy efficient - lower running costs		
(92 plus) A		
(81-91) B	81	84
(69-80) C		
(55-68) D		
(39-54) E		
(21-38) F		
(1-20) G		
Not energy efficient - higher running costs		
England & Wales	EU Directive 2002/91/EC	