



**10 Coed Isaf Road, Pontypridd, CF37 1EL**

**£199,950**

360 WALK THROUGH TOUR AVAILABLE

**\*\* Semi Detached Bungalow \*\* Two Double Bedrooms \*\* No Onward Chain \*\***

Viewing recommended on this semi detached bungalow located on the popular Coed Isaf Dvelopment.

Offering excellent potential and comprising entrance lobby, lounge/diner, kitchen, two double bedrooms and shower/wet room.

There are gardens to the front and rear with views over the town, as well as a garage & parking space located a short walk away.

Offered with no onward chain.



### Entrance Lobby



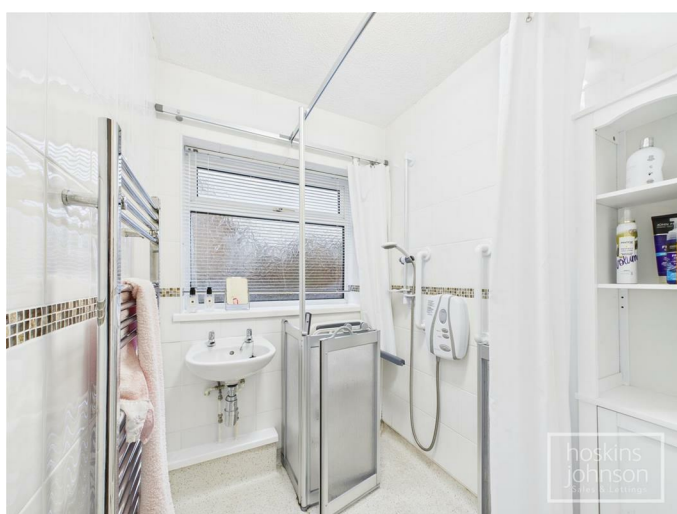
Double glazed entrance door and side panel, radiator.

### Cloaks/WC

WC, tiled walls and floor, double glazed window to side.

### Inner Hall

### Shower/Wet Room



Shower area, wash hand basin, tiled walls, chrome heated towel rail, double glazed window to side.

### Lounge



Two double glazed windows to front, radiator, fitted gas fire with back boiler for heating and water, storage cupboard.

### Kitchen



Fitted with base and wall cupboards with tiled splash backs, stainless steel sink unit, electric cooker point, space for fridge/freezer and washing machine,

radiator, tiled floor, double glazed window to side, half glazed door to rear.

### Bedroom 1



Double glazed window to rear, radiator, airing cupboard, built in single wardrobe.

### Bedroom 2



Double glazed window to rear, radiator, built in double wardrobe.

### Outside

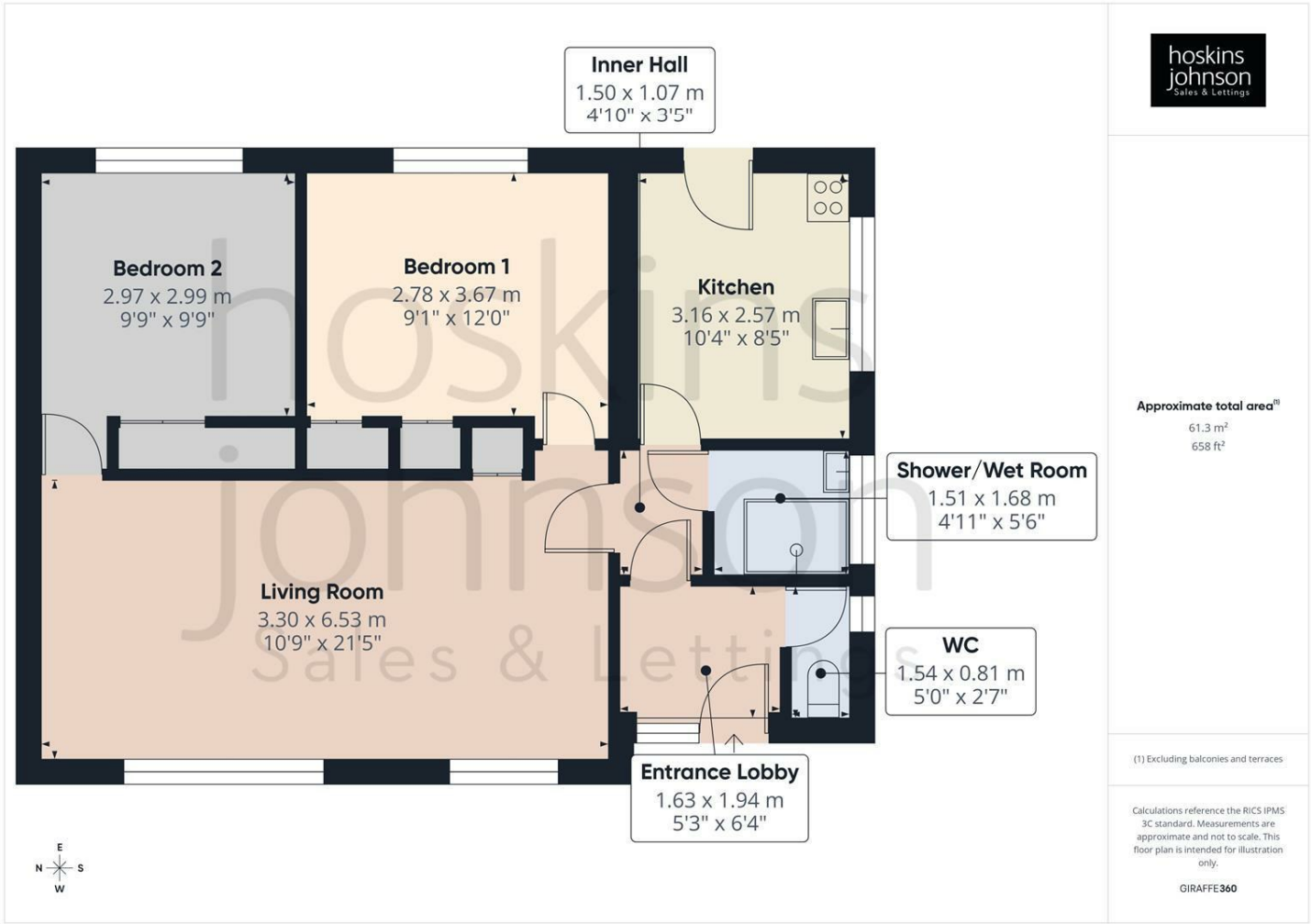


Lawned front garden with bushes and steps leading down to front entrance.

Side access leads to a good size garden with paved seating areas, lawns, flower beds, rear access and views over Pontypridd and beyond.

There is a single garage and parking space located a very short walk from the property.

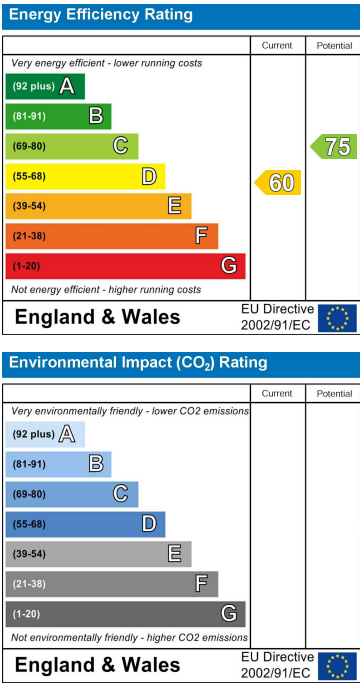
Floor Plan



Area Map



Energy Efficiency Graph



These particulars, whilst believed to be accurate are set out as a general outline only for guidance and do not constitute any part of an offer or contract. Intending purchasers should not rely on them as statements of representation of fact, but must satisfy themselves by inspection or otherwise as to their accuracy. No person in this firm's employment has the authority to make or give any representation or warranty in respect of the property.