

Towers Wills

Town & Country

📞 01935 577 032 | 01460 298 530 | ✉ info@towerswills.co.uk



32, Darwin Drive, Yeovil, Somerset BA21 5GE

£140,000

Towers Wills are pleased to offer to market this well-maintained and inviting one-bedroom coach house, located in a quiet and sought-after residential development in Yeovil. Offering generous living space, a modern layout, and excellent access to local amenities, this property represents an ideal opportunity for first-time buyers, investors, or those looking to downsize without compromising on comfort or convenience. This attractive coach house is set apart from the typical apartment layout, offering private entry and no property above or below – ensuring a greater sense of space and privacy.

Accommodation:

As you enter, you're welcomed into a spacious hallway with stairs leading to the main living area. The open-plan lounge and dining space provides a bright and sociable environment, perfect for relaxing or entertaining. Large dual-aspect windows create a fresh and airy feel throughout. The kitchen area is thoughtfully designed, featuring a range of base and wall units, an integrated oven and hob, and space for additional appliances. Whether you're preparing a quick breakfast or hosting friends, this kitchen caters to all your needs. The double bedroom is a peaceful retreat, comfortably accommodating a double bed and additional furnishings, with neutral décor ready for you to make your own. Completing the accommodation is a well-appointed bathroom, with a classic white suite including bath with shower over, WC, and wash hand basin – all finished to a modern standard.

Externally, the property benefits from its own allocated parking space, a valuable asset in this area. Being a coach house, the property also offers a feeling of independence and privacy compared to traditional apartment living.

Tenure: Leasehold – approx. 118 years remaining

Council Tax Band: A

Energy Performance Rating: C

This is a rare opportunity to purchase a stylish and low-maintenance home in a well-regarded location, ideal for those seeking a move-in ready property with excellent amenities and transport links nearby.

Key Features

- One Bedroom Coach House
- Popular Wyndham Park Development
- Ideal First Time Buy / Buy to Let
- Off Road Parking
- Well Presented Throughout

Contact Us

Towers Wills Estate Agents - Yeovil

114, Hendford Hill
Yeovil

Somerset

BA202RF

T: 01935 577032

E: info@towerswills.co.uk

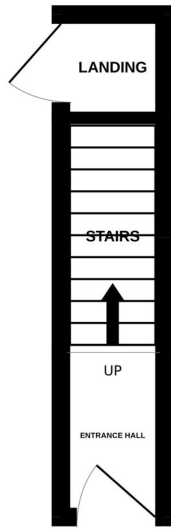
Energy Efficiency

Score	Energy rating	Current	Potential
92+	A		97 A
81-91	B		
69-80	C	80 c	
55-68	D		
39-54	E		
21-38	F		
1-20	G		

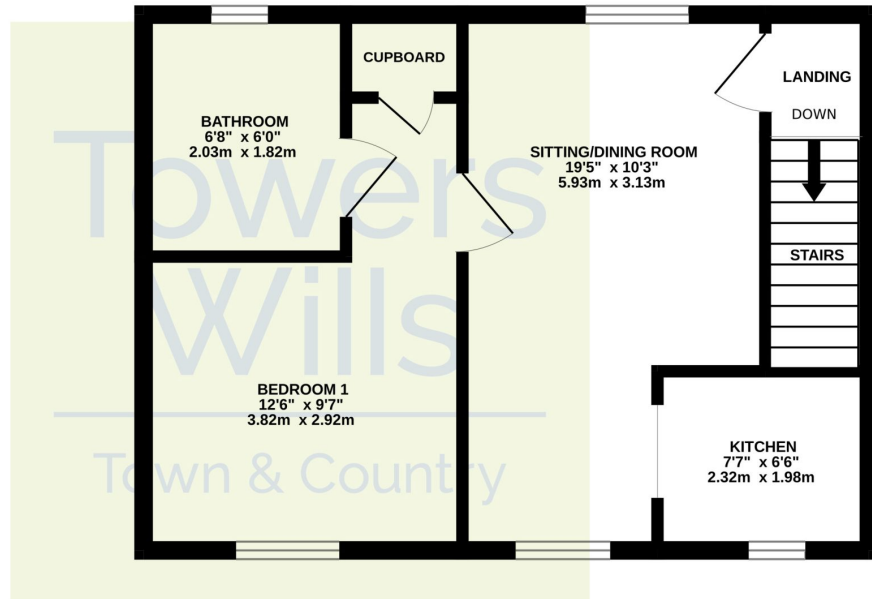


Floor Plan

GROUND FLOOR



1ST FLOOR



Whilst every attempt has been made to ensure the accuracy of the floorplan contained here, measurements of doors, windows, rooms and any other items are approximate and no responsibility is taken for any error, omission or mis-statement. This plan is for illustrative purposes only and should be used as such by any prospective purchaser. The services, systems and appliances shown have not been tested and no guarantee as to their operability or efficiency can be given.
Made with Metropix ©2025

Please Note No tests have been undertaken of any of the services and any intending purchasers should satisfy themselves in this regard. Towers Wills Ltd for themselves and for the vendor of this property whose agents they are, give notice that, (i) these particulars do not constitute any part of an offer or contract, (ii) all statements contained within these particulars are made without responsibility on the part of Towers Wills or the vendor, (iii) whilst made in good faith, none of the statements contained within these particulars are to be relied upon as a statement of representation or fact, (iv) any intending purchaser must satisfy him/herself by inspection or otherwise as to the correctness of each of the statements contained within these particulars, (v) the vendor does not make or give either Towers Wills or any person in their employment any authority to make or give representation or warranty whatsoever in relation to this property.

Photographs / Floor Plans Photographs are reproduced for general information and it must not be inferred that any item is included for sale with this property. Please note floor plans are not to scale and are for identification purposes only. The photographs used in these particulars may have been taken with the use of a wide angle lens. If you have any queries as to the size of the accommodation or plot, please address these with the agent prior to making an appointment to view

Towers Wills

The White House, 114 Hendford Hill, Yeovil BA20 2RF

Yeovil 01935 577032 / South Petherton 01460 298530

info@towerswills.co.uk | www.towerswills.co.uk