



THE ELMS MANOR LANE

WEST SUSSEX, PO20 1LU

£2,700 PCM

A lovely detached flint house in the quiet hamlet of South Mundham to the south of Chichester. Four Double Bedrooms.

Viewing is highly recommended.

EPC Rating D

Council Tax Band G

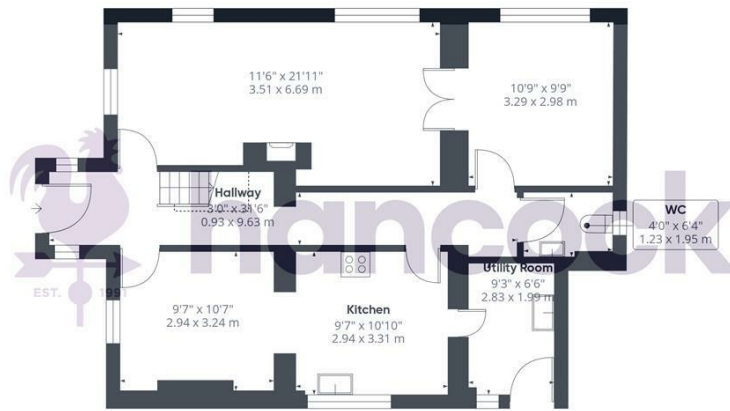
Cesspit and mains fresh water

Oil heating.



hancock

Lettings & Estate Agents



Floor 0



Floor 1



| Energy Efficiency Rating | | |
|---|-------------------------|-----------|
| | Current | Potential |
| Very energy efficient - lower running costs | | |
| (92 plus) A | | 97 |
| (81-91) B | | |
| (69-80) C | | |
| (55-68) D | | |
| (39-54) E | 55 | |
| (21-38) F | | |
| (1-20) G | | |
| Not energy efficient - higher running costs | | |
| England & Wales | EU Directive 2002/91/EC | |

Agents Note: Whilst every care has been taken to prepare these particulars, they are for guidance purposes only. All measurements are approximate and are for general guidance purposes only and whilst every care has been taken to ensure their accuracy, they should not be relied upon and potential buyers/tenants are advised to recheck the measurements

Chichester Office Lettings
 5 Northgate
 Chichester
 West Sussex
 PO19 1BA

01243 531111
 lettings@hancockpartners.co.uk
 www.hancockpartners.co.uk



hancock
 Lettings & Estate Agents