



## Montpelier Road, W5

£2,400 Per calendar month

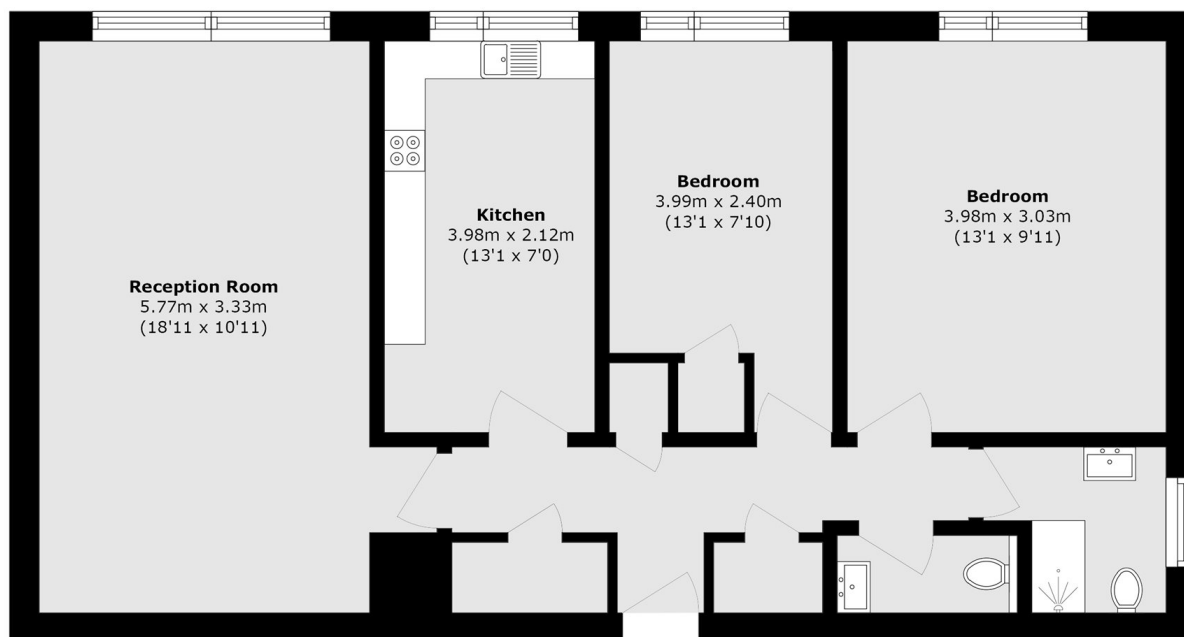
A stylish ground floor two double bedroom apartment that has been tastefully refurbished to a high standard throughout. There is a large reception room overlooking communal gardens, separate kitchen, modern shower room, separate WC and ample storage.

Located on Montpelier Road just moments from Montpelier, St Gregory and other schools the property is also within easy reach of Ealing Broadway station, shops and amenities.

### Features

- Two Bedrooms
- One Bathroom
- One Cloakroom
- Separate Kitchen
- Newly Refurbished
- Montpelier Catchment

# Montpelier Road, London, W5



Total area (approx.): 65.5 sq. m (705.0 sq. ft)