



## Darnley Road, E9

£500,000

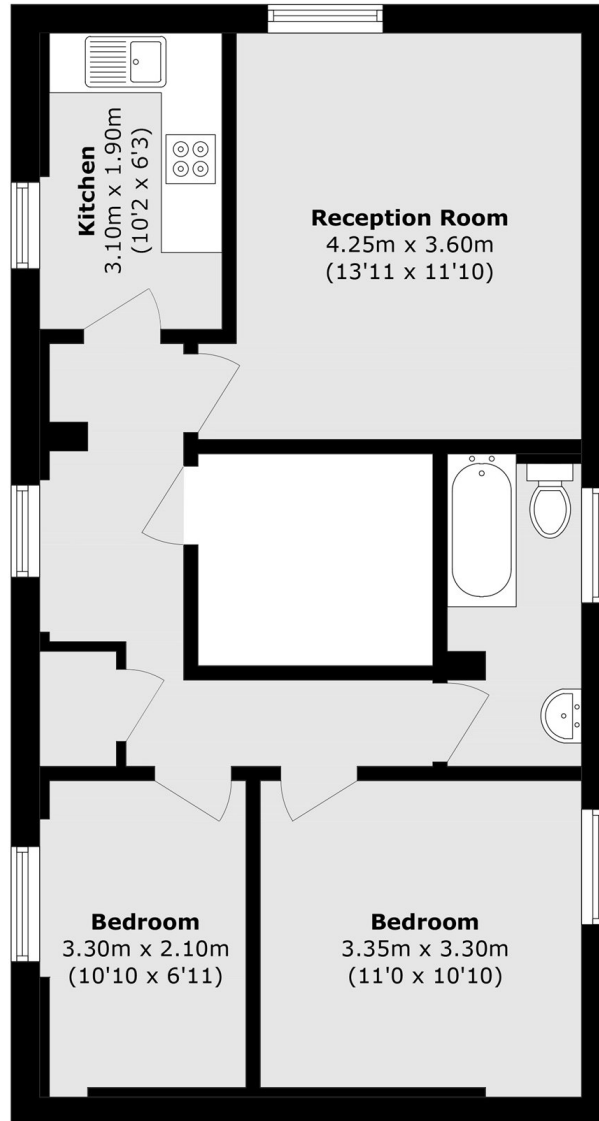
An end of terrace, grade two listed, two bedroom apartment. This property has sash windows throughout, private living space and separate kitchen area, good storage and access to a shared garden. It is being offered chain free and also comes with residential parking.

Darnley Road is located off Mare Street and the abundance of shops, restaurants and amenities of Hackney Central can be located under a quarter of mile walk. The nearest station is London Fields on the overground providing access to the City.

### Features

- Chain Free
- Local Amenities
- Residential Parking
- Sash Windows
- Grade Two Listed Building
- Two Bedrooms

# Darnley Road, London, E9



Total area (approx.): 57.3 sq. m (616.7 sq. ft)