

Russell Road, CR4

£350,000

A first floor, one double bedroom apartment with bathroom and separate W.C as well as a private balcony. There is a high specification throughout, including an attention to energy efficiency including underfloor heating and modern boiler. A further benefit of this development is a low service charge, as well as share of the freehold for all residents.

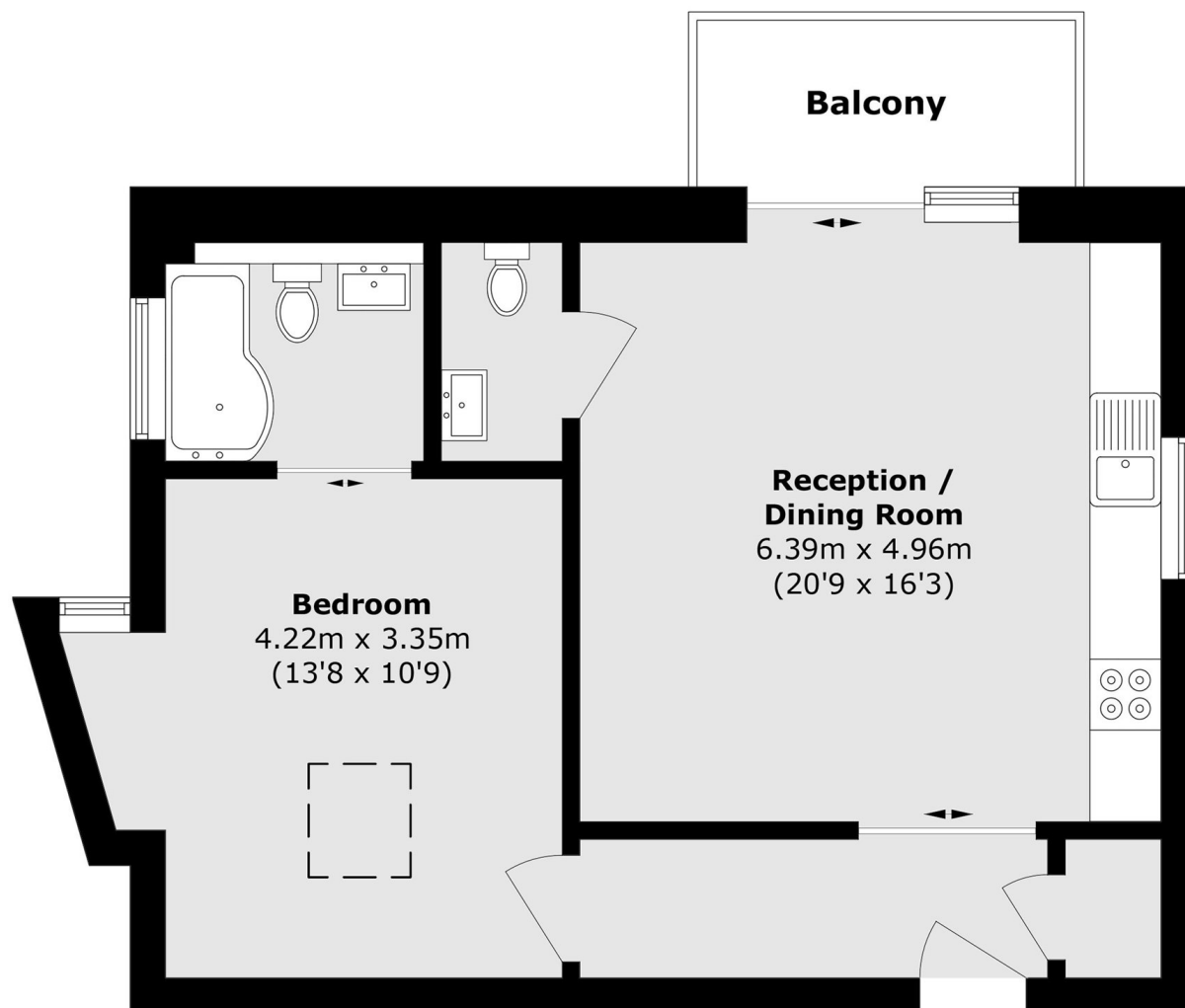
*Images may be of another flat within the same development for representative purposes *

Century House is a small boutique development of just nine apartments, all with a share of the freehold. Tucked away on Russell Road, with Wimbledon and Tooting nearby by car. The wide green open spaces of Mitcham Common is also just a short walk away with it's open grassy space, wooded areas and ponds, plus various trails for walking and running.

Features

- One Double Bedroom
- Large Balcony
- Bathroom & Separate W.C
- Underfloor Heating
- Energy Efficient Boiler
- Share Of The Freehold
- Quartz Worktops
- Modern Kitchens
- Bosch Oven & Hob
- Gas Boiler

Russell Road, Mitcham, CR4



First Floor

Total area (approx.): 54.8 sq. m (589.9 sq. ft)

Balcony area (approx.): 4.5 sq. m (48.4 sq. ft)