



Guide Price
£450,000

Freehold

4x  2x  1x 

**Forge Path, Whitfield,
Dover, Kent, CT16**

OVER 60?

Secure this property
for up to **59% less!**

Wards
Helping you move forwards



Main features

- **Stunning extended family home superbly finished**
- **Open plan living space with log burner**
- **Generous off road parking**
- **Large detached double garage with lighting, electric & plumbing**
- **Sought after village location of Whitfield close to schools & shops**

Accommodation

GROUND FLOOR

Entrance Lobby

Lounge : 12'10 x 11'11 (3.91m x 3.63m)

Dining Area: 12'6 x 12'1 (3.81m x 3.69m)

Kitchen/Breakfast Area: 18'4 x 12'2 (5.59m x 3.71m)

Utility Room: 8'7 x 5'3 (2.62m x 1.60m)

Downstairs Cloakroom

FIRST FLOOR

Landing

Bedroom 1 : 13'1 x 10'8 (3.99m x 3.25m)

En-Suite Shower Room

Bedroom 2 : 12'6 x 9'4 (3.81m x 2.85m)

Bedroom 3 : 12'3 x 7'9 (3.74m x 2.36m)

Bedroom 4 : 8'8 x 6'8 (2.64m x 2.03m)

Bathroom

OUTBUILDING

Double Garage

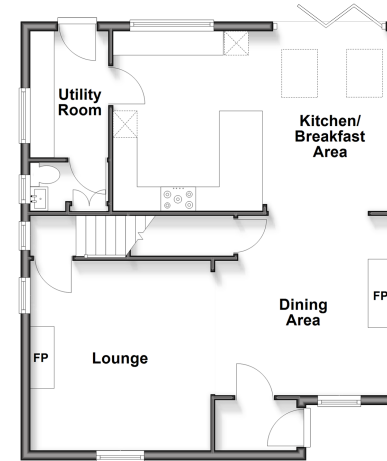
OUTSIDE

Front Garden

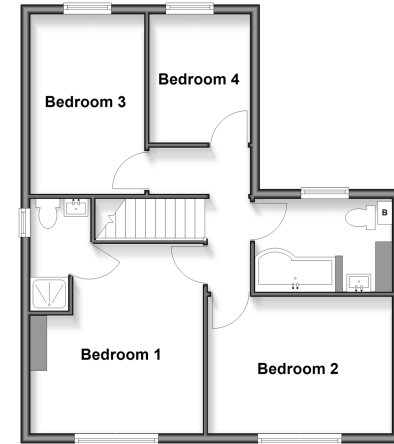
Rear Garden

Parking For Several Vehicles

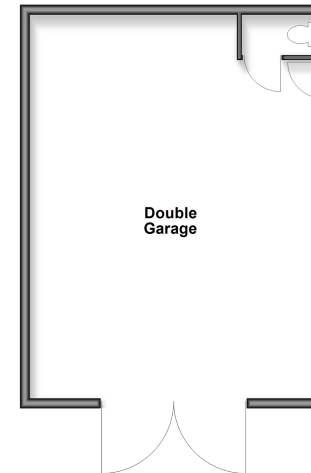
Ground Floor
Approx. 63.6 sq. metres (684.8 sq. feet)



First Floor
Approx. 54.5 sq. metres (587.1 sq. feet)



Outbuilding
Approx. 48.0 sq. metres (516.4 sq. feet)



Call Dover - 01304 214876 ■ wardsofkent.co.uk

■ Through a Homewise Home For Life Plan people aged 60+ can secure this property for up to 59% less, by purchasing a Lifetime Lease



10736266/20260323/TE/CDH