



Carnation Road
Shirebrook MANSFIELD

burchell
edwards

Carnation Road Shirebrook MANSFIELD NG20 8FG

for sale offers over
£210,000



Property Description

Located on Carnation Road in Shirebrook, this attractive three-bedroom detached home offers generous living accommodation and a versatile layout ideal for family life.

The property opens with a welcoming entrance hall leading to a convenient ground-floor WC, spacious lounge overlooking the rear garden that flows to the conservatory, and a well-equipped kitchen featuring integrated appliances and ample storage. The conservatory adds valuable additional living space, perfect for relaxing or entertaining.

Upstairs, the property offers three well-proportioned bedrooms, including a primary bedroom with its own en-suite shower room. A modern family bathroom and practical storage options, including an airing cupboard and loft access, further enhance the home's functionality.

Externally, the property benefits from a concrete driveway providing parking for up to two vehicles, a single garage with an electric door, and a secure rear garden with decking and lawn areas—ideal for outdoor enjoyment. This lovely family home presents a fantastic opportunity in a desirable residential area.

Entrance Hall

A welcoming entrance hall featuring a UPVC door entry and a modern tiled floor, providing access to the ground floor accommodation.

Wc / Cloakroom

Fitted with a tiled floor, wall-mounted radiator, ceramic toilet and wash hand basin, plus a tiled splashback for easy maintenance.

Lounge

A comfortable living space with a carpeted floor, double glazed window overlooking the rear garden, and a wall-mounted radiator.

Kitchen

A well-appointed kitchen offering a tiled floor, double glazed window to the front and sliding doors to the rear. Includes matching wall and base units, inset stainless steel sink and drainer, tiled splashback, wall-mounted radiator, and integral electric oven with gas hob and cooker hood.

Conservatory

A bright additional living space built on a brick base with tiled flooring, double glazed windows to the side and rear, and a UPVC door providing side access.

First Floor Landing

Carpeted landing area providing access to the loft, along with both a storage cupboard and an airing cupboard.

Bedroom One

A spacious main bedroom with laminate flooring, two double glazed windows to the rear, and a wall-mounted radiator.

En-Suite

Private en-suite featuring laminate flooring, walk-in shower, ceramic toilet and hand wash basin, and a rear-facing opaque double glazed window.

Bedroom Two

A good-sized second bedroom with laminate flooring, double glazed front window, and wall-mounted radiator.

Bedroom Three

An additional bedroom with carpeted flooring, double glazed window to the front, wall-mounted radiator, and useful over-stairs storage.

Bathroom

Family bathroom with vinyl flooring, bath with shower over, ceramic toilet and wash hand basin set within a vanity unit, wall-mounted towel radiator, UPVC cladding, and spotlights.

Externals

The front elevation features a generous concrete driveway providing comfortable off-road parking for up to two vehicles, with a secure gated pathway leading neatly down the side of the property to the rear garden.

At the back, the garden offers a private, enclosed outdoor space with a locked side gate for added security, a sturdy brick boundary wall, a raised decking area ideal for seating or entertaining, and a well-kept lawn perfect for family use.

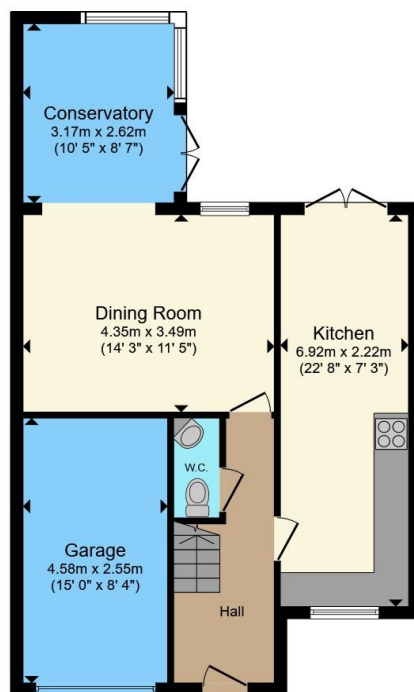
Garage

Single garage with electric up-and-over door.

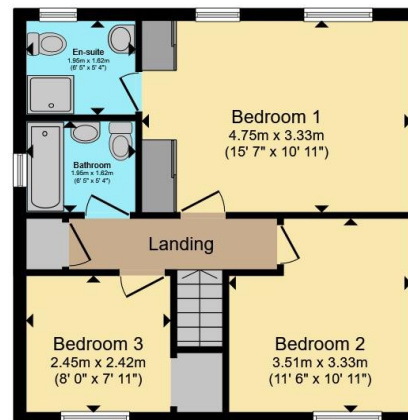








Ground Floor



First Floor

Total floor area 107.0 m² (1,152 sq.ft.) approx

This floor plan is for illustrative purposes only. It is not drawn to scale. Any measurements, floor areas (including any total floor area), openings and orientation are approximate. No details are guaranteed, they cannot be relied upon for any purpose and they do not form part of any agreement. No liability is taken for any error, omission or misstatement. A party must rely upon its own inspection(s). Powered by www.propertybox.io



To view this property please contact Burchell Edwards on

T 01623 627727
E Mansfield@burchelledwards.co.uk

12 Albert Street
MANSFIELD NG18 1EB

EPC Rating: C Council Tax
Band: C

Tenure: Freehold

view this property online burchelledwards.co.uk/Property/MFD209564



1. MONEY LAUNDERING REGULATIONS Intending purchasers will be asked to produce identification documentation at a later stage and we would ask for your co-operation in order that there will be no delay in agreeing the sale. 2. These particulars do not constitute part or all of an offer or contract. 3. The measurements indicated are supplied for guidance only and as such must be considered incorrect. Potential buyers are advised to recheck measurements before committing to any expense. 4. We have not tested any apparatus, equipment, fixtures, fittings or services and it is in the buyers interest to check the working condition of any appliances.

Burchell Edwards is a trading name of Connells Residential which is registered in England and Wales under company number 1489613, Registered Office is Cumbria House, 16-20 Hockliffe Street, Leighton Buzzard, Bedfordshire, LU7 1GN. VAT Registration Number is 500 2481 05.

See all our properties at www.burchelledwards.co.uk | www.rightmove.co.uk | www.zoopla.co.uk

Property Ref: MFD209564 - 0004