



Princess Road

London, NW6

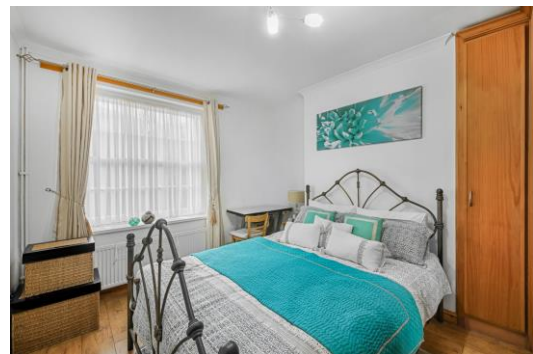
Asking Price £900,000

A beautiful maisonette within easy reach of the fantastic amenities Little Venice have to offer.

Standing at just shy of 1200 sqft this beautiful maisonette spans the ground and lower ground of a Victorian conversion. The layout has been carefully considered with the original feature maintained. Upon entering you are greeted by a bright living room with a large bay window at the centre of the room flooding the space with natural light. The kitchen overlooks a private garden and benefits from integrated appliances. There is a bedroom that leads off of the kitchen that can also be utilised as a study or dining room.

The lower ground consists of three double bedrooms with ample built in storage and original sash windows. The bathroom has been tastefully designed with a three piece suite. There is direct access to a large private garden perfect for the summer.

CHESTERTONS



Princess Road

London, NW6

- Victorian conversion
- Maisonette
- Private garden
- Over 1000 sqft



Tenure: Leasehold 87 years 11 months

Service Charge: £946.55 pa

Ground Rent: £10 pa

Local Authority: Brent

Council Tax Band: C

Score	Energy rating	Current	Potential
92+	A		
81-91	B		
69-80	C		
55-68	D	65 D	91 B
39-54	E		
21-38	F		
1-20	G		

Chestertons Little Venice Sales

26 Clifton Road

Maida Vale

London

W9 1SX

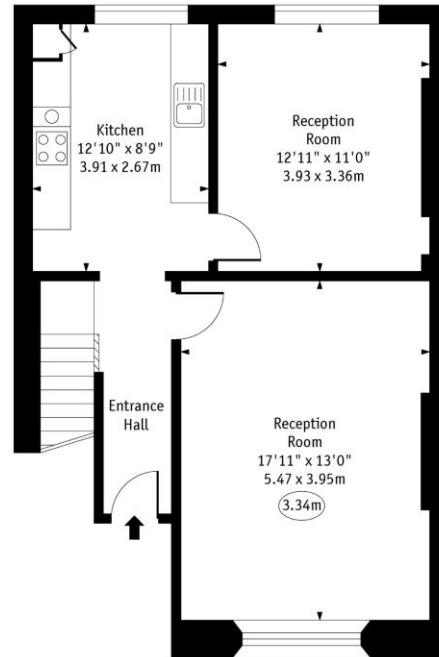
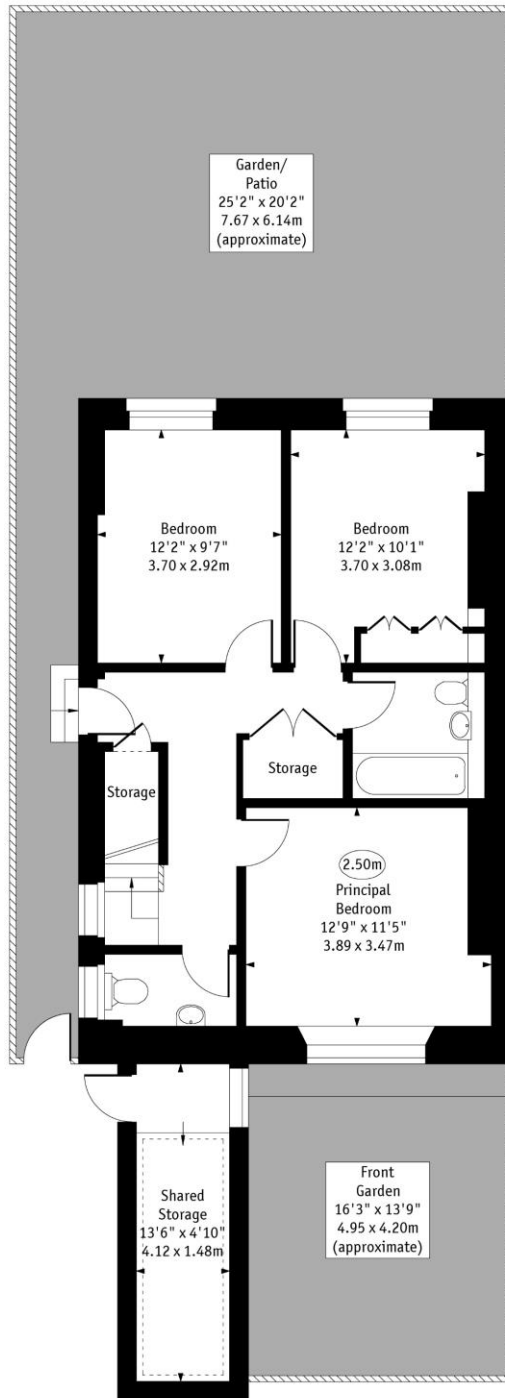
littlevenice@chestertons.co.uk

020 7286 4632

chestertons.co.uk

Princess Road, NW6

○ - Ceiling Height



Upper Ground Floor

Lower Ground Floor

Approx Gross Internal Area 1195 Sq Ft - 111.01 Sq M
(Excluding Shared Storage)

Shared Storage Area 80 Sq Ft - 7.45 Sq M

Every attempt has been made to ensure the accuracy of the floor plan shown.
However, all measurements, fixtures, fittings, and data shown are approximate interpretations and
for illustrative purposes only. Measured according to the RICS. Not To Scale.

www.goldlens.co.uk
Ref. No. 029491DH

