



Not for marketing purposes INTERNAL USE ONLY

Eastbury Avenue
Plymouth



Property Description

This well-maintained four-bedroom family home offers spacious and flexible accommodation arranged over two floors. The property features a comfortable lounge with a central fireplace, opening through to a bright dining area, creating an ideal space for family living and entertaining. A modern, accessible shower room is finished in a clean, contemporary style with quality fittings.

Upstairs, there are four bedrooms, providing versatile space suitable for family members, guests, or home working.

Externally, the home benefits from a lawned front garden and a generous, tiered rear garden offering lawn areas, planted borders, paved sections, and a storage shed. Overall, this is a practical and comfortable home ideally suited to family life in a popular residential setting.

Front Of House

The main entrance is slightly elevated and reached by a short flight of concrete steps with metal railings on both sides. The front door is grey, modern in style, and fitted with a vertical glazed panel. Near the centre of the lawn is a circular raised flower bed, edged with light stone blocks.

Hallway

Stairs leading to first floor. White radiator. Under stair storage.

Lounge

15' 1" x 9' 11" (4.60m x 3.02m)

Double glazing window to the front elevation. White radiator. Wide open archway leading through to the dining room. A central feature fireplace with a white surround and hearth is positioned along the dividing wall, fitted with a black inset gas fire.

Dining Room

10' x 8' 11" (3.05m x 2.72m)

Double glazing window to the rear elevation. White radiator.

Kitchen

13' 7" x 10' 5" (4.14m x 3.17m)

A range of matching wall and base units with worktops above. Double glazing window to the rear elevation. Stainless steel sink with dual mixer tap. Plumbing for washing machine. Space for cooker with extractor hood above. Under-counter space for appliance. Double glazing door leading to rear garden.

First Floor

Landing

Double glazing window to the front elevation. Built in storage cupboard.

Bedroom 1

12' 1" x 10' 4" (3.68m x 3.15m)

Double glazing window to the front elevation. White radiator.

Bedroom 2

12' 4" x 10' 6" (3.76m x 3.20m)

Double glazing window to the rear elevation.
Built in storage cupboard. White radiator.

Bedroom 3

10' 9" x 7' 7" (3.28m x 2.31m)

double glazing window to the rear elevation.

Bedroom 4

7' 5" x 7' 2" (2.26m x 2.18m)

Double glazing window to the front elevation.

Bathroom

A walk-in, corner shower enclosure is fitted with clear glass panels and chrome handles.

Inside the shower is a fold-down shower seat and a grab rail. The shower is equipped with a height-adjustable chrome showerhead mounted on a vertical rail. The bathroom is finished in light grey wall tiles laid evenly across the walls. Wall-mounted white ceramic wash basin with a single chrome mixer tap. Chrome heated towel rail. Obscured double glazing window to the rear elevation. Close-coupled toilet.

Rear Garden

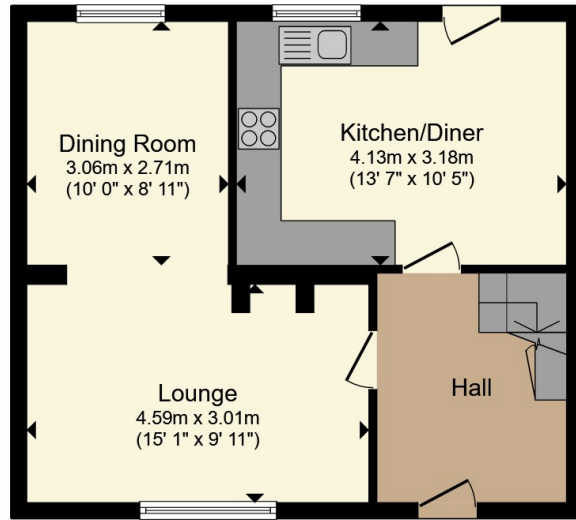
The garden is long and gently sloping, divided into distinct tiers by low rendered retaining walls.

A central paved pathway runs from the foreground toward the rear of the garden, incorporating a short set of steps that leads up to the upper lawned area. On the right-hand side of the lower level is a paved patio or hardstanding area.

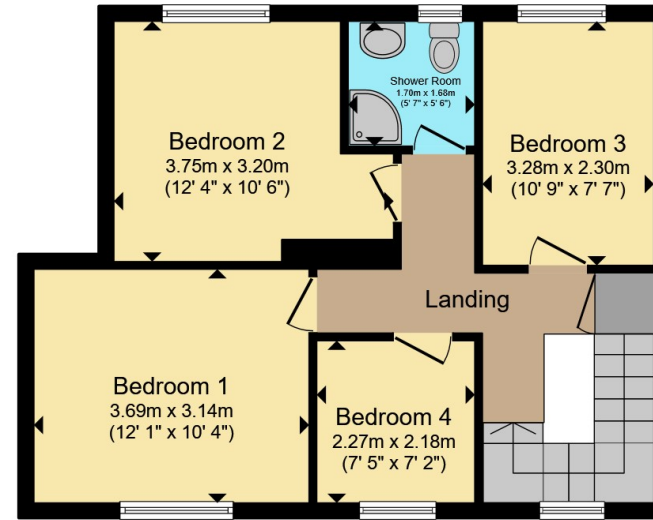








Ground Floor



First Floor

Total floor area 97.0 m² (1,044 sq.ft.) approx

This floor plan is for illustrative purposes only. It is not drawn to scale. Any measurements, floor areas (including any total floor area), openings and orientation are approximate. No details are guaranteed, they cannot be relied upon for any purpose and they do not form part of any agreement. No liability is taken for any error, omission or misstatement. A party must rely upon its own inspection(s). Powered by www.propertybox.io



To view this property please contact Connells on

T 01752 351616
E stbudeaux@connells.co.uk

15 Victoria Road St Budeaux
 PLYMOUTH PL5 1RW

EPC Rating: C Council Tax
 Band: A

Tenure: Freehold

check out more properties at connells.co.uk



1. MONEY LAUNDERING REGULATIONS Intending purchasers will be asked to produce identification documentation at a later stage and we would ask for your co-operation in order that there will be no delay in agreeing the sale. 2. These particulars do not constitute part or all of an offer or contract. 3. The measurements indicated are supplied for guidance only and as such must be considered incorrect. Potential buyers are advised to recheck measurements before committing to any expense. 4. We have not tested any apparatus, equipment, fixtures, fittings or services and it is in the buyers interest to check the working condition of any appliances.

Connells Residential is registered in England and Wales under company number 1489613, Registered Office is Cumbria House, 16-20 Hockliffe Street, Leighton Buzzard, Bedfordshire, LU7 1GN. VAT Registration Number is 500 2481 05.

See all our properties at www.connells.co.uk | www.rightmove.co.uk | www.zoopla.co.uk

Property Ref: SBU109802 - 0003