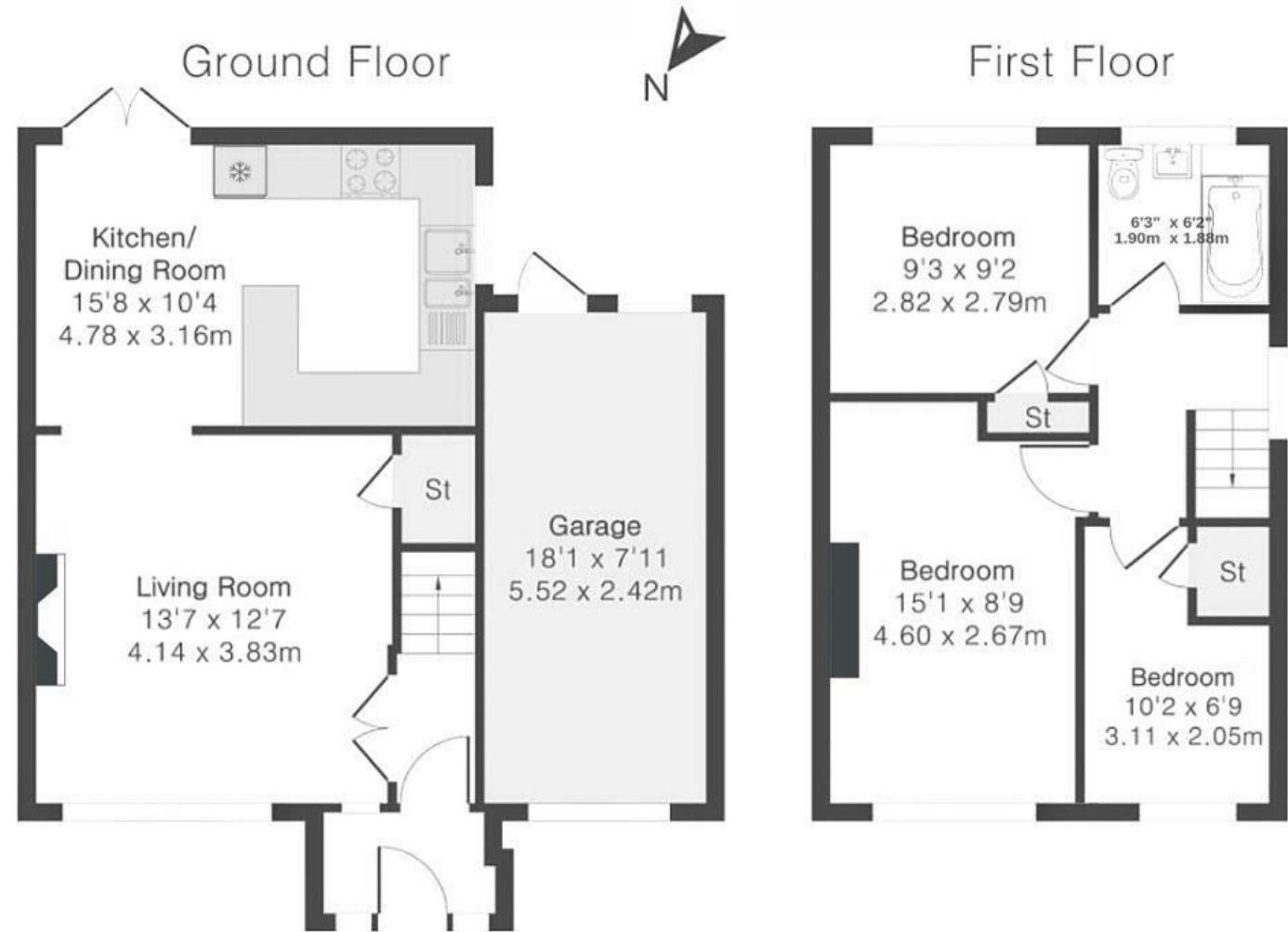


# Foxcombe Road

WHITCHURCH

APPROXIMATE FLOOR AREA  
73 SQM / 786 SQFT



Illustrations are for reference purposes only, measurements are approximate, not to scale.

Boardwalk

# Foxcombe Road

, BRISTOL



£350,000



3 Bedrooms



BS14 0JT



1 Bathrooms

*"Bright mornings in the kitchen, with the backdoor open. Hearing the birds and wildlife, completely peaceful, and the sun beaming through the windows. Just sitting on the back step, or in the garden and watching the trees move in the wind!"*

