



Hessel Street, E1

£4,200 Per calendar month

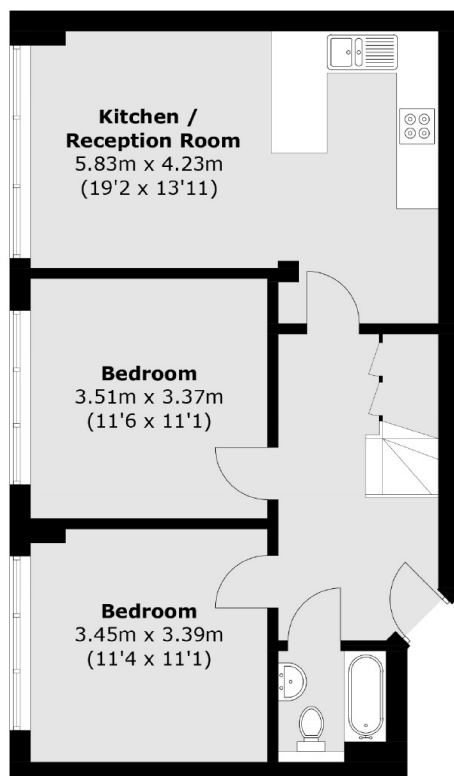
A four double bedroom, split level apartment. The property has an open plan kitchen reception with a modern finish throughout. An ideal property for sharers looking to be a short walk to the City.

Located within easy reach of Brick Lane, Tower Bridge and the City.

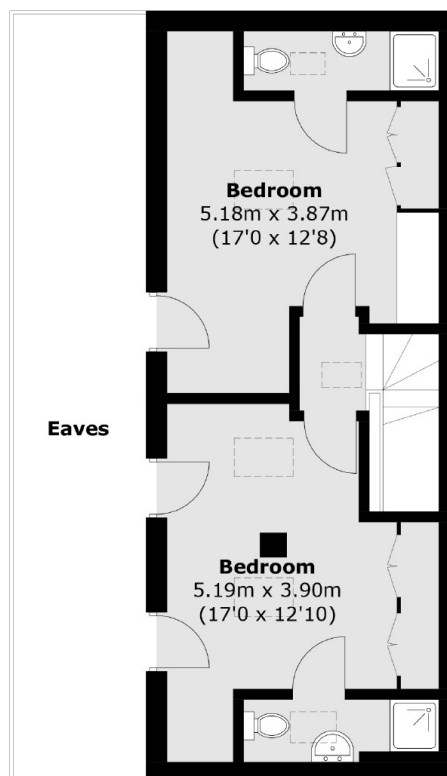
Features

- Split Level
- Four Double Bedrooms
- Two En Suites
- Open Plan Living
- Fantastic Location
- Wooden Floors

Hessel Street, London, E1



First Floor



Second Floor

Total area (approx.): 101.2 sq. m (1,089.2 sq. ft)
(Excluding Eaves)