



Kensington Court Mews

Kensington, W8

£5,000 per month
(£1,153.85 per week)

Short Let - A lovely, quirky and modern one bedroom maisonette on the second floor of this Mews in the heart of Kensington.

CHESTERTONS



Kensington Court Mews

Kensington, W8

- Short Let
- One Double Bedroom
- Modern
- Duplex
- Plenty of Natural Light
- Located just moments away from Hyde Park



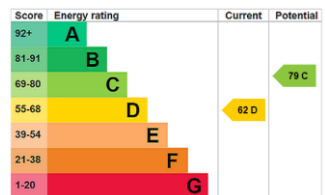
A modern one double bedroom maisonette on the second floor of this converted Mews in the heart of Kensington.

This newly redecorated one double property is composed of a double bedroom on the top floor, semi open kitchen which is fully equipped and fitted, open plan living room, separate bathroom with washer and separate dryer.

Benefiting from an abundance of natural light, the property has been recently redecorated and is very charming.

Amazing location in the Heart of Kensington, just a few minutes walk from the High Street, with boutique stores, coffee shops and

Minimum Term: 1 months
Deposit Required: £4,615.38
Local Authority: Kensington and Chelsea
Council Tax Band: F
EPC Rating: D
Furnished



Chestertons Kensington Lettings

116 Kensington High Street
 Kensington
 London
 W8 7RW
 kensingtonlettingsusers@chestertons.co.uk
 02079377260
 chestertons.co.uk

Additional tenant charges apply (fees apply to non-AST tenancies only)
 Tenancy Agreement Fee: £300
 References per Tenant/Guarantor: £60
 Inventory check (approx. £100 – £250 inc. VAT)
 chestertons.co.uk/property-to-rent/applicable-fees

Kensington Court Mews, Kensington, W8

Approximate gross internal area

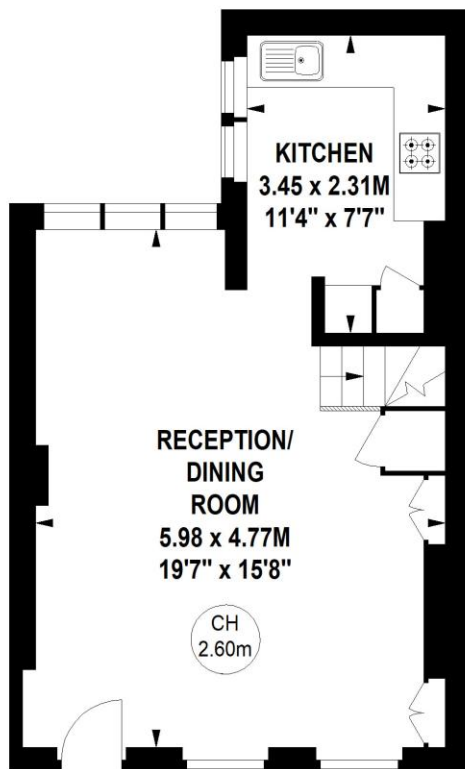
66.05 sq m / 711 sq ft

(Including Eaves Storage)

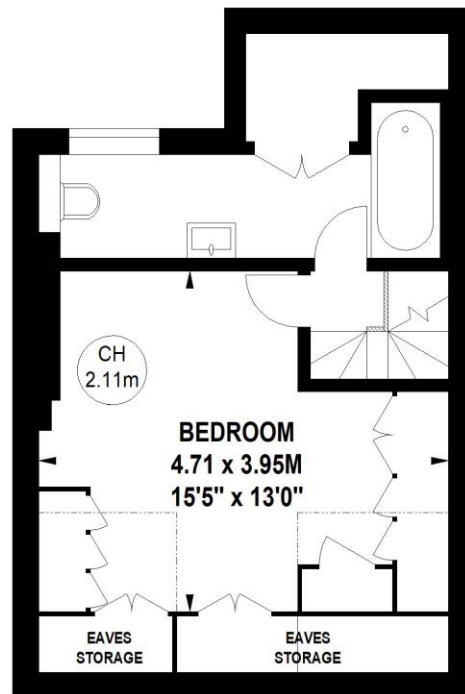
Approximate Eaves Storage area

3.07 sq m / 33 sq ft

Key :
CH - Ceiling Height



Second Floor



Third Floor

**Not to scale, for guidance only and must not be relied upon as a statement of fact.
All measurements and areas are approximate only**

