



Connells

Sinclair Drive
Basingstoke

Sinclair Drive Basingstoke RG21 6AF

for sale
£200,000



Property Description

Situated in the popular development of Sinclair Drive, the property benefits from being within close proximity to the mainline Train Station to London Waterloo. This apartment is just 0.5 miles away from Basingstoke's Town Centre, housing the Festival Place Shopping Centre and The Malls which offers a variety of shops, including restaurants, bars, convenience stores and entertainment facilities such as the Vue Cinema. There are a number of supermarkets within the area and there are also local parks providing opportunity for walks and fresh air. There is easy access to the A339 to Newbury, A33 to Reading and the M3 via car.

Entrance

Two single cupboards, doors to:

Kitchen, Lounge, Diner

21' (max) x 10' 8" (max) (6.40m (max) x 3.25m (max))

Double glazed double French doors to the balcony, double glazed window, work surfaces with cupboards and drawers under and cupboards over, one and a half bowl stainless steel sink with drainer and mixer tap, four ring gas hob with oven under and hood over, washing machine, integrated fridge-freezer, recently installed boiler located in the kitchen.

Bedroom One

10' 11" (max) x 9' 11" (max) (3.33m (max) x 3.02m (max))

Built-in three door wardrobe with full length mirror, double glazed window.

Bedroom Two

6' 2" (max) x 10' 9" (max) (1.88m (max) x 3.28m (max))

Double glazed window.

Bathroom

Double glazed window, low level WC, wash hand basin, panel enclosed bath with shower attachment, tiled walls, extractor fan.

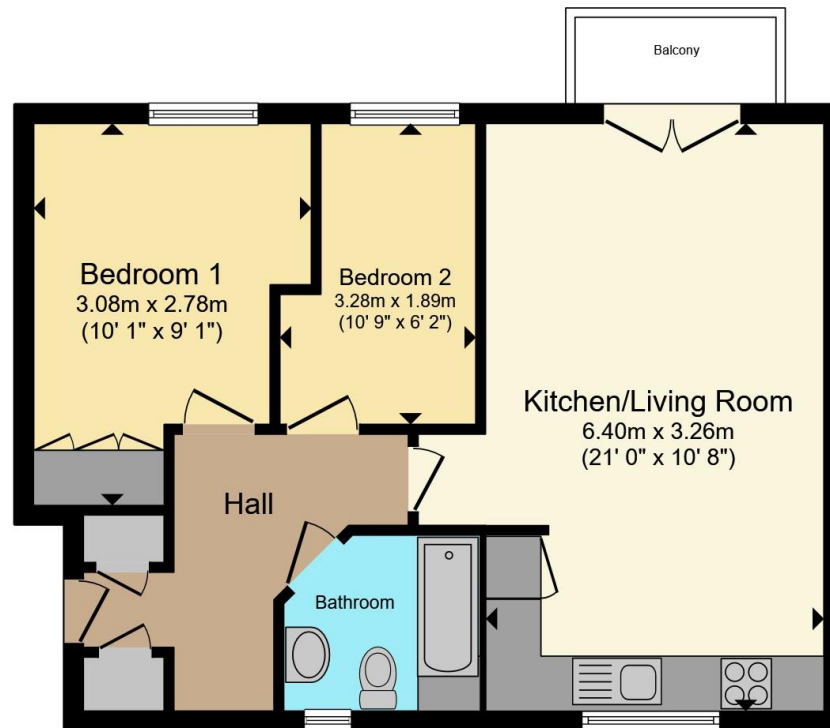
Parking

The property benefits from having one allocated parking space.









Total floor area 53.7 m² (579 sq.ft.) approx

This floor plan is for illustrative purposes only. It is not drawn to scale. Any measurements, floor areas (including any total floor area), openings and orientation are approximate. No details are guaranteed, they cannot be relied upon for any purpose and they do not form part of any agreement. No liability is taken for any error, omission or misstatement. A party must rely upon its own inspection(s). Powered by www.propertybox.io

Connells

To view this property please contact Connells on

T 01256 464566
E basingstoke@connells.co.uk

1 Wote Street
BASINGSTOKE RG21 7NE

EPC Rating: B Council Tax
Band: C

Service Charge:
2147.48

Ground Rent:
275.00

Tenure: Leasehold

view this property online connells.co.uk/Property/BTK314544

This is a Leasehold property with details as follows; Term of Lease 150 years from 01 Jan 2009.

Should you require further information please contact the branch. Please Note additional fees could be incurred for items such as Leasehold packs.



1. MONEY LAUNDERING REGULATIONS Intending purchasers will be asked to produce identification documentation at a later stage and we would ask for your co-operation in order that there will be no delay in agreeing the sale. 2. These particulars do not constitute part or all of an offer or contract. 3. The measurements indicated are supplied for guidance only and as such must be considered incorrect. Potential buyers are advised to recheck measurements before committing to any expense. 4. We have not tested any apparatus, equipment, fixtures, fittings or services and it is in the buyers interest to check the working condition of any appliances.

Connells Residential is registered in England and Wales under company number 1489613, Registered Office is Cumbria House, 16-20 Hockliffe Street, Leighton Buzzard, Bedfordshire, LU7 1GN. VAT Registration Number is 500 2481 05.

See all our properties at www.connells.co.uk | www.rightmove.co.uk | www.zoopla.co.uk

Property Ref: BTK314544 - 0005