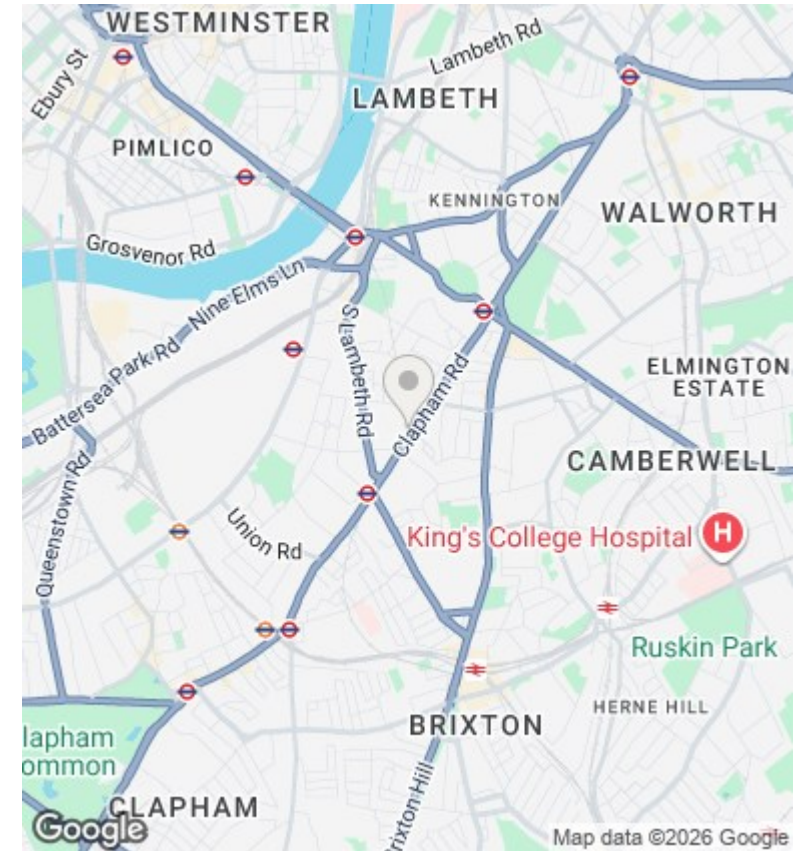
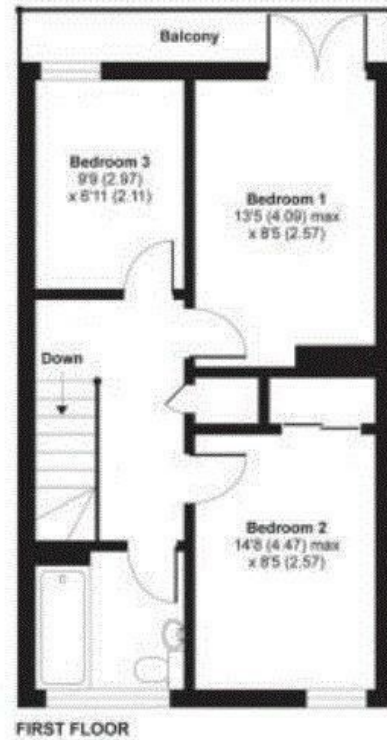
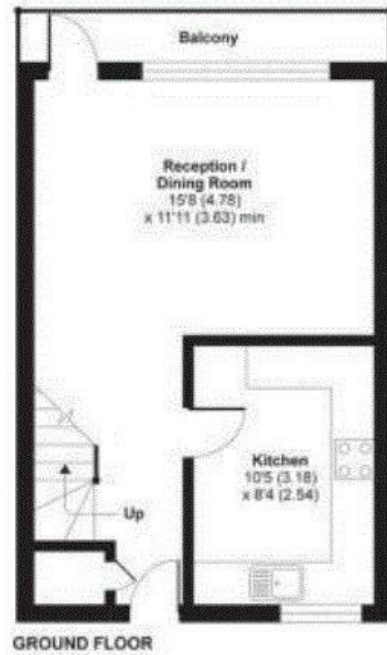




Dovet Court, 70 Mursell Estate, Stockwell, London, SW8 1HS

Offers In The Region Of £450,000

- Ideal Investment Purchase
- Kitchen Breakfast Room
- Vacant Possession
- Spacious Split - Level Flat
- Great Access To Central London
- Chain Free
- Long Lease
- Easy Access To Stockwell Tube Station



Directions

Viewings

Viewings by arrangement only. Call 0208 681 8133 to make an appointment.

Council Tax Band

C

EPC Rating:

Energy Efficiency Rating		
	Current	Potential
<i>Very energy efficient - lower running costs</i>		
(92 plus) A		
(81-91) B		
(69-80) C		
(55-68) D		
(39-54) E		
(21-38) F		
(1-20) G		
<i>Not energy efficient - higher running costs</i>		
England & Wales	EU Directive 2002/91/EC	