



Cliff Road, NW1

£2,500 Per calendar month

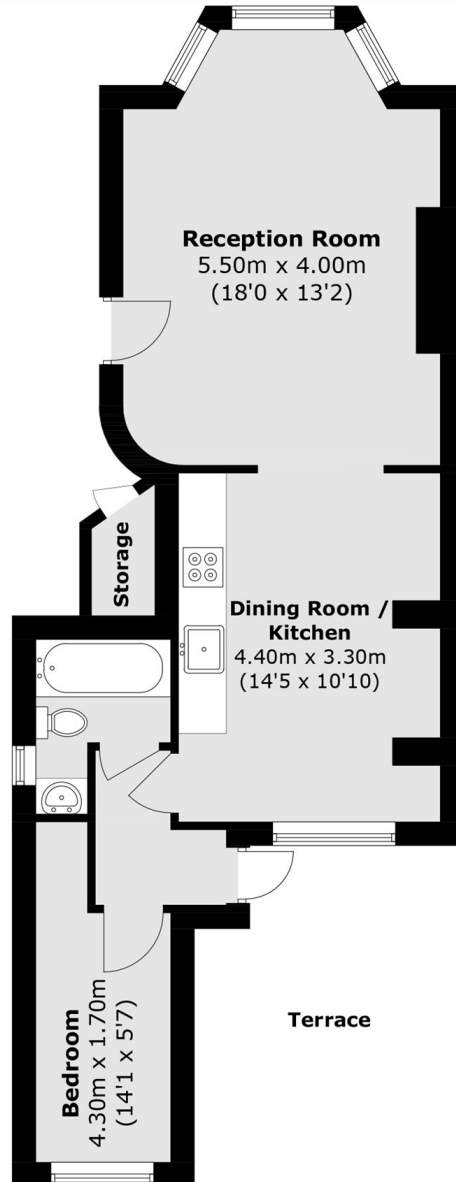
A one-bedroom conversion with a private decked terrace set on the raised ground floor of a semi-detached Victorian house. The main features include an open plan reception with wood floors, period features, high ceilings, and dividing doors. The property further benefits from a contemporary bathroom, a private roof terrace, and built in storage space.

Cliff Road is a desirable and convenient location with excellent access to local shopping and transport amenities in Camden Town and Kentish Town and only a short walk from Kentish Town Tube Station (Northern Line) and Caledonian Road Tube Station (Piccadilly Line).

Features

- One Bedroom
- Private Terrace
- Open Plan Reception
- Period Conversion
- Local Amenities
- Great Transport Links

Cliff Road,
London, NW1



First Floor

Total area (approx.): 49.0 sq. m (527.0 sq. ft)

Storage area: 2.0 sq. m (22.0 sq. ft)

Terrace area: 13.9 sq. m (149.6 sq. ft)