



*Jordan fishwick*

Apt 78 Quantum, 6 Chapelton Street, M1  
£1,600 Per Calendar Month



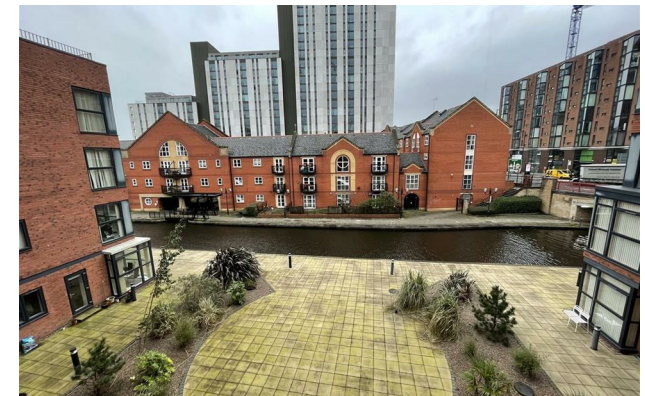
## Quantum Manchester M1 2BQ

£1,600 Per Calendar Month

### The Property


Available Now. Jordan Fishwick are delighted to bring to the market, this second floor dual aspect three double bedroom apartment with balcony and a secure parking space. This generous size apartment benefits from views of the Ashton Canal and each bedroom is a good size double. Quantum Development in conveniently located in Piccadilly Village, just a stones throw from Ancoats and short walking distance to Piccadilly and the popular Northern Quarter. Accommodation comprises of entrance hallway with large utility room, three double bedrooms, the master with en suite shower room, additional bathroom suite and dual aspect living area with modern fully fitted kitchen off. Furnished throughout. Tax Band D. EPC Rating B.

**\*VIDEO/ PHOTO OFFERS NOT ACCEPTED - PLEASE CALL TO BOOK A VIEWING\***



- Available Now
- 2nd Floor Apartment
- Three Double Bedrooms
- Furnished
- Tax Band D
- EPC Rating C
- Parking included
- Close to Transport Links
- Close to City Centre



Energy Efficiency Rating		
	Current	Potential
Very energy efficient - lower running costs		
(92 plus) <b>A</b>		
(81-91) <b>B</b>	<b>81</b>	<b>84</b>
(69-80) <b>C</b>		
(55-68) <b>D</b>		
(39-54) <b>E</b>		
(21-38) <b>F</b>		
(1-20) <b>G</b>		
Not energy efficient - higher running costs		
<b>England &amp; Wales</b>	EU Directive 2002/91/EC 	





These particulars are believed to be accurate but they are not guaranteed and do not form a contract. Neither Jordan Fishwick nor the vendor or lessor accept any responsibility in respect of these particulars, which are not intended to be statements or representations of fact and any intending purchaser or lessee must satisfy himself by inspection or otherwise as to the correctness of each of the statements contained in these particulars. Any floorplans on this brochure are for illustrative purposes only and are not necessarily to scale.

Offices at: Offices at Chorlton, Didsbury, Disley, Hale, Glossop, Macclesfield, Manchester Deansgate, Manchester Whitworth Street, New Mills, Sale, Wilmslow and Withington