



Strathdon Drive, SW17

£1,550 Per calendar month

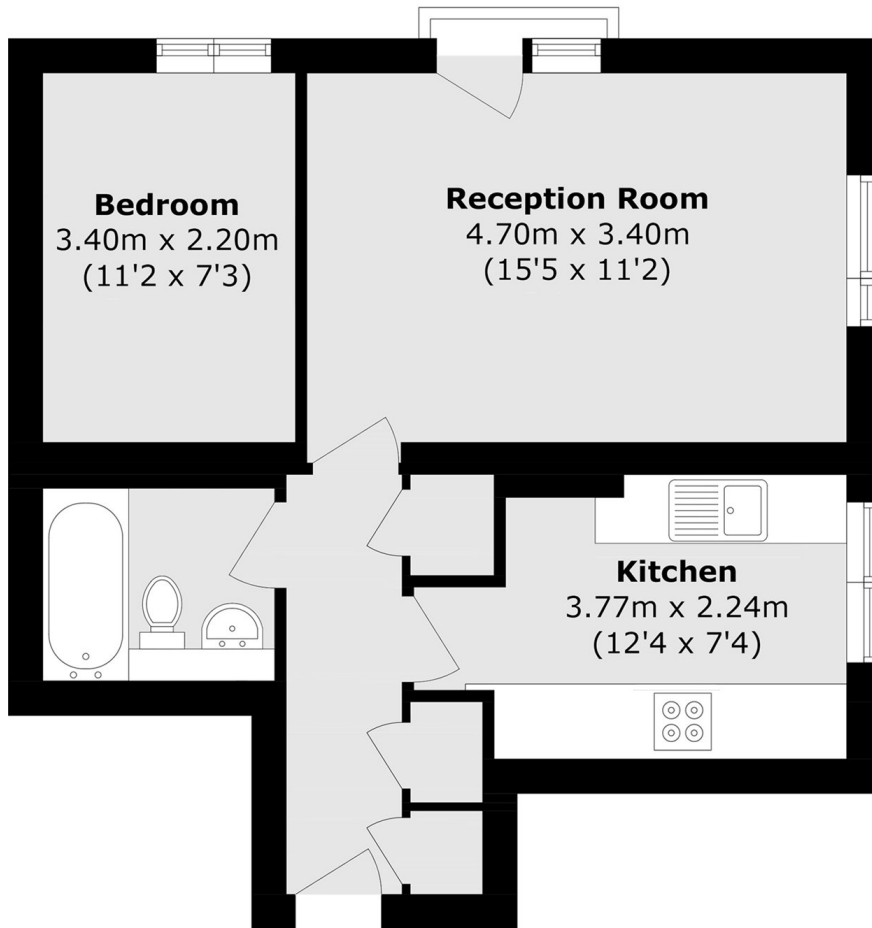
A recently redecorated one bedroom apartment. The property benefits from a large living room, modern kitchen and ample storage, making it perfect a single professional or couple.

Well located for the local amenities of Garratt Lane & Southside shopping centre whilst allowing good access to Earlsfield rail station and Tooting Broadway tube station.

Features

- Purpose Built
- Large Reception Room
- Modern Kitchen
- Ample Storage
- Recently Redecorated
- Close to St Georges Hospital

Strathdon Drive, London, SW17



Total Area (approx.): 42.4 sq. m (456.3 sq. ft)