



**POOLE
TOWNSEND**

Linnet Grove, Kendal, LA9 7RP

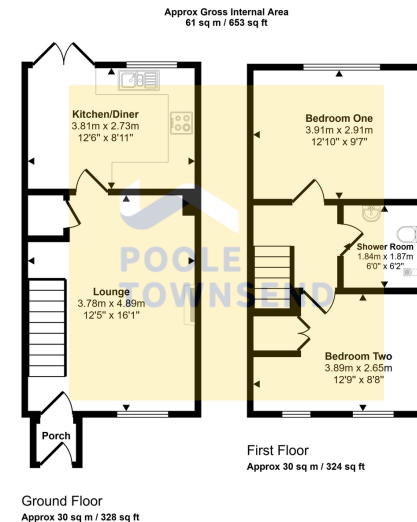
£234,950

🛏️ 2 🚿 1 🚗 1



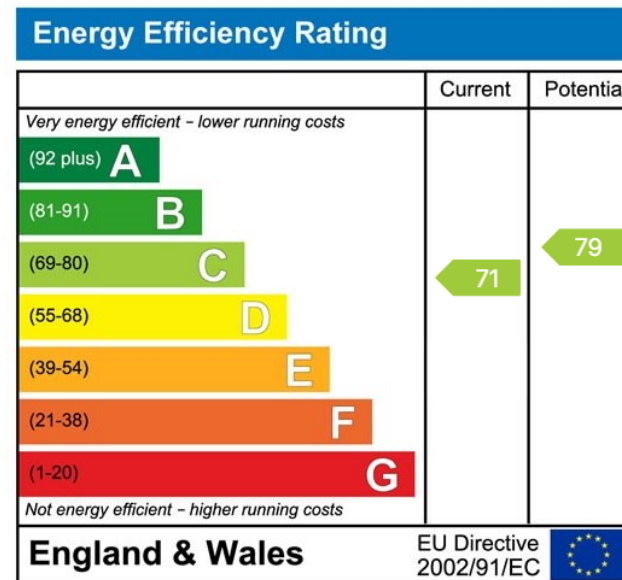
- Terraced House
- 1 Reception Room
- Off-Road Parking
- Practical Porch
- Tenure: Freehold
- 2 Bedrooms
- Private Patio Garden
- Driveway
- Peaceful Cul-De-Sac
- Council Tax Band: C





This floorplan is only for illustrative purposes and is not to scale. Measurements of rooms, doors, windows, and any items are approximate and no responsibility is taken for any error, omission or mis-statement. Icons of items such as bathroom suites are representations only and may not look like the real items. Made with Made Snappy 360.

Nestled at the head of a peaceful cul-de-sac, this attractive mid-terraced home offers bright and well-proportioned accommodation, ideal for a variety of buyers. The welcoming lounge, complete with feature electric fire, flows through to a modern kitchen/diner where glazed doors open directly onto a private patio garden framed by established shrubs, perfect for outdoor dining and relaxation. Upstairs, there are two comfortable double bedrooms and a contemporary shower room, while outside the property benefits from off-road parking for two vehicles. Combining convenience with charm, this home is ready to move straight into.



Visit us at
www.pooletownsend.co.uk
enquiries@pooletownsend.co.uk

We are open
 Monday – Friday 9.00 – 5.00
 Saturday 9.00 – 1.00

Barrow 01229 811811
 Ulverston 01229 588111
 Grange 015395 33316
 Kendal 01539 734455
 Milnthorpe 015395 62044