



## 47A OKEHAMPTON ROAD, NW10

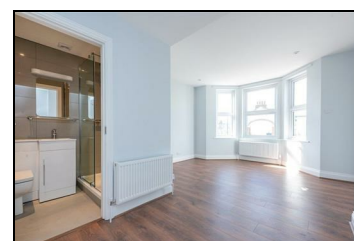
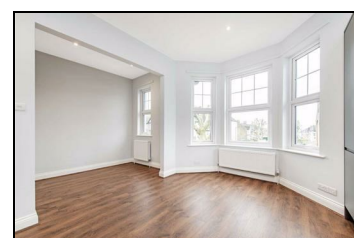
**£3,000 PER CALENDAR MONTH**

A split level 3 double bedroom property of some approx. 1,000 sq ft. Situated on the first floor. The flat comprises of south facing luxury open plan reception/kitchen, 3 contemporary bathrooms (2 en-suites) and wood flooring to most of the accommodation.

Available: End July 2026

Location: The property is located on a quiet residential street, with walking distance from Queens Park itself, Kensal Rise over Ground Station, Zone 2, numerous bus routes to Central London and LEXI Cinema. Excellent access to the local amenities on Chamberlayne Road including gastro pubs, eateries and bars. Within the catchment area of popular Malorees schools and Queens Park Community school.

- First Floor Split Level Flat
- 3 Double Bedrooms
- Open Plan Reception/Kitchen
- 3 Bathrooms (2 Ensuites)
- Quiet Residential Road
- Good access to Queen's Park



Energy Efficiency Rating		Environmental Impact (CO <sub>2</sub> ) Rating	
Current	Potential	Current	Potential
74	74	C	C
<p>Energy Efficiency: 74 (Current) / 74 (Potential)</p> <p>Environmental Impact: C (Current) / C (Potential)</p>			