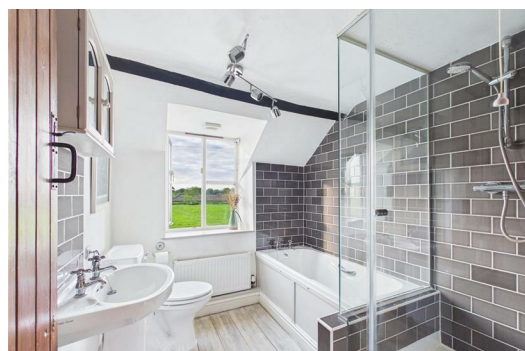




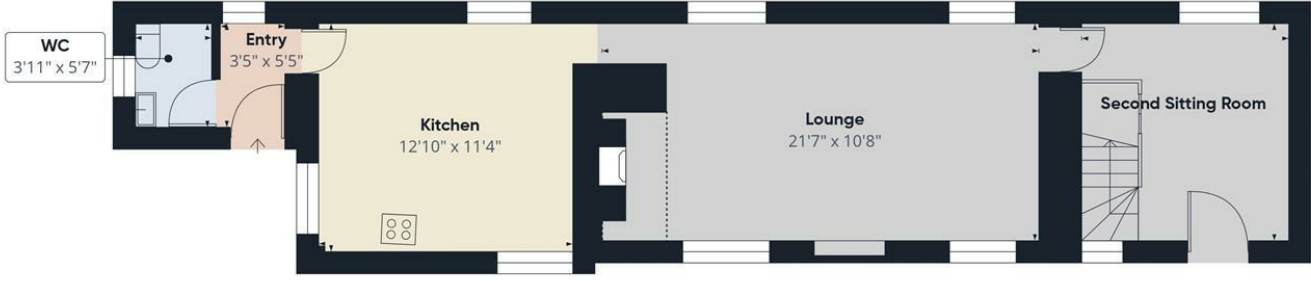
Olive

ESTATE AGENTS



Little Ireland Cottage , Wedmore, BS28 4BJ £385,000

*** SPACIOUS SEMI-DETACHED 18TH CENTURY FAMILY HOME *** APPROXIMATELY 10 MINUTES WALK TO THE VILLAGE CENTRE AND A FEW MINUTES WALK TO THE POST AND WICKET BAR *** THREE BEDROOMS *** FAMILY BATHROOM *** LIVING ROOM *** SITTING ROOM WITH FIREPLACE *** KITCHEN / BREAKFAST ROOM *** CLOAKROOM *** ON STREET PARKING *** COTTAGE GARDEN WHICH COULD ACCOMMODATE OFF STREET PARKING, SHOULD IT BE REQUIRED *** VACANT POSSESSION *** NO ONWARD CHAIN *** EPC E *** COUNCIL TAX BAND D *** FREEHOLD ***



Floor 0



Floor 1



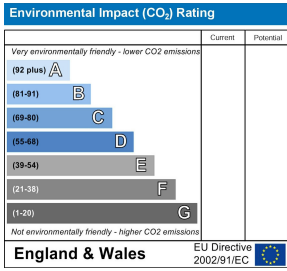
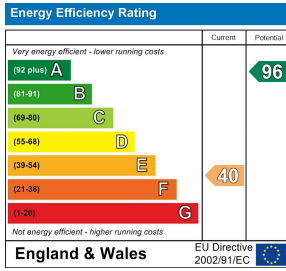
Approximate total area⁽¹⁾
1034 ft²
Reduced headroom
26 ft²

(1) Excluding balconies and terraces

Reduced headroom
..... Below 5 ft

Calculations reference the RICS IPMS 3C standard. Measurements are approximate and not to scale. This floor plan is intended for illustration only.

GIRAFFE360



2C Bath Street, Cheddar, Somerset, BS27 3AA
Tel: 01934 742966
enquiries@oliveproperties.uk
oliveproperties.uk

