

Beadon Road, W6

£1,176 Per week

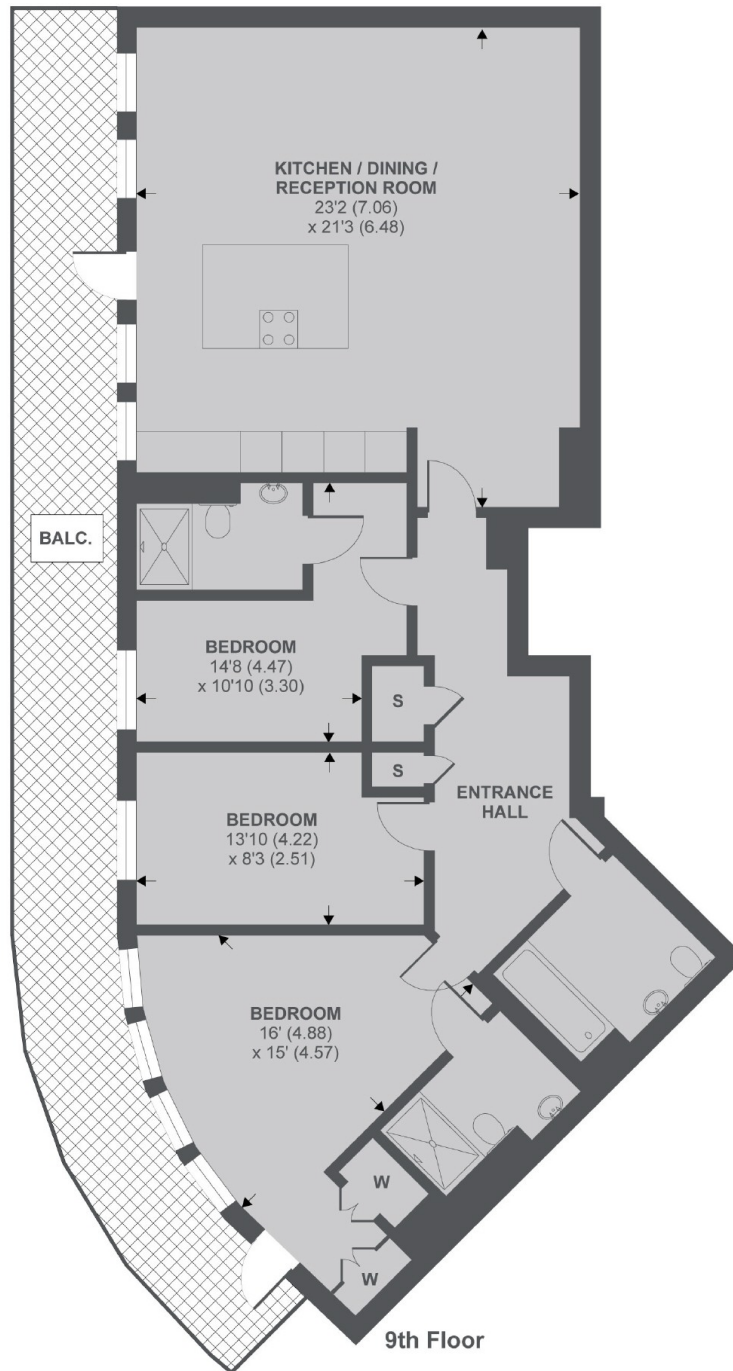
The apartment is on the 9th floor and has a very spacious, open plan kitchen and reception room, with a vast wraparound balcony. The master bedroom has stunning views, an excellent dressing area and en-suite bathroom. There are two further double bedrooms (one also en-suite) and a third family bathroom. This apartment would make an excellent home.

The development, which includes a concierge and gym, is in central Hammersmith, right next to the tube station.

Features

- Three Bedrooms
- Three Bathrooms
- Wraparound Balcony
- Modern
- Ninth Floor
- Concierge And Gym

Beadon Road, London, W6



Beadon Road, W6

APPROX FLOOR AREA 1217 SQ.FT 113 SQ.M

Copyright nichecom.co.uk 2018 REF : 317630

Dexters

Hammersmith
164-166 King Street
London
W6 0QU
Lettings
020 8939 6062

Energy Rating: B. We aim to make our particulars both accurate and reliable. However they are not guaranteed; nor do they form part of an offer or contract. If you require clarification on any points then please contact us, especially if you're traveling some distance to view. Please note that appliances and heating systems have not been tested and therefore no warranties can be given as to their good working order.

 **RICS** Regulated
Estate Agent
and Letting Agent

dexters.co.uk