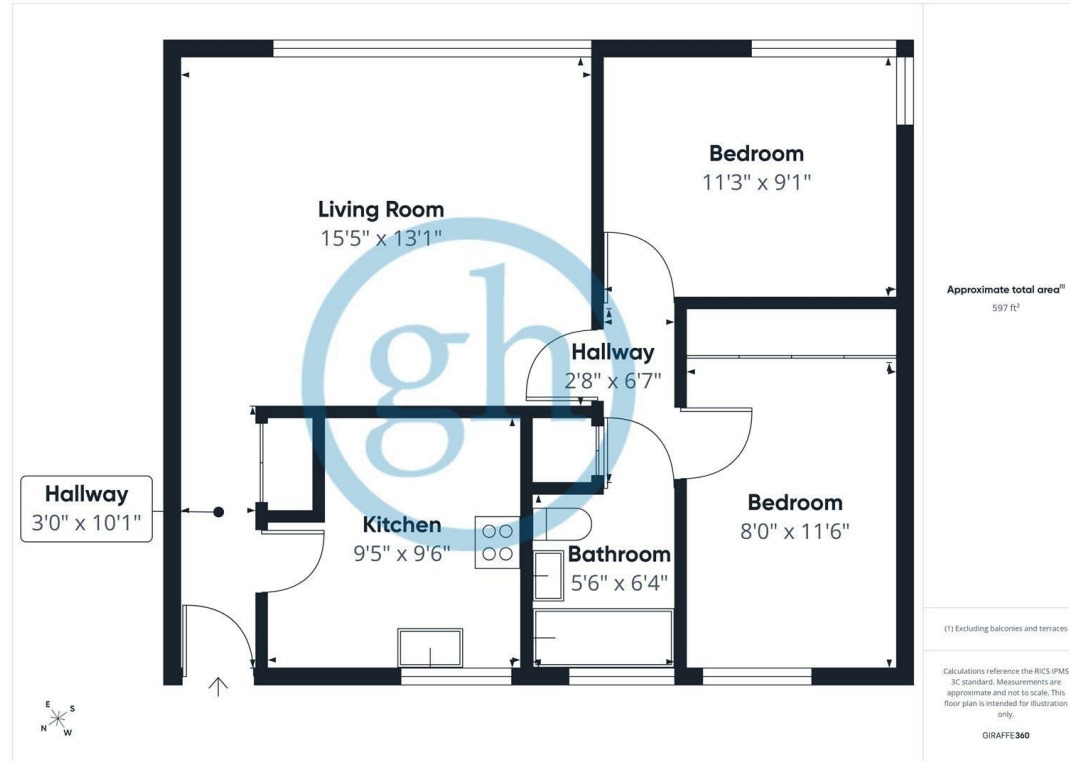




Hawkesworth Close, Northwood, HA6 2FT
£1,625 PCM



Offering bright and well-proportioned accommodation throughout, this well-presented two-bedroom ground floor apartment is ideally situated within easy walking distance of Northwood High Street and Northwood Underground Station. The property comprises a spacious living room, two well-proportioned bedrooms, a fitted kitchen and a modern bathroom suite. Further benefits include permit parking and electric heating. Northwood High Street offers an excellent selection of shops, cafés, restaurants and everyday amenities, while Northwood Underground Station (Metropolitan Line) provides direct services into Central London. The A40 and M25 are also within easy reach, offering convenient access to London, Heathrow Airport and the surrounding Home Counties.



Energy Efficiency Rating		
	Current	Potential
Very energy efficient - lower running costs		
(92 plus) A		
(81-91) B		
(69-80) C		77
(55-68) D	60	
(39-54) E		
(21-38) F		
(1-20) G		
Not energy efficient - higher running costs		
England & Wales	EU Directive 2002/91/EC	

You may download, store and use the material for your own personal use and research. You may not republish, retransmit, redistribute or otherwise make the material available to any party or make the same available on any website. These particulars, whilst believed to be accurate are set out as a general outline only for guidance and do not constitute any part of an offer or contract. Intending purchasers should not rely on them as statements or representation of fact, but must satisfy themselves by inspection or otherwise as to their accuracy. No person in this firm's employment has the authority to make or give any representation or warranty in respect of the property.

92 High Street, Ruislip, Middlesex, HA4 8LS
 T: 01895 625999
 lettings@gibsonhoney.co.uk
 www.gibsonhoney.co.uk

