



Barley Grove, Deeping St Nicholas, Spalding
£472,685 Freehold

**Sharman
Quinney**

Key Features



- Five Bedroom Executive Detached Home
- Study
- Dual aspect large Lounge and separate Dining Room
- Utility Room
- Two En Suites

Accommodation Includes

Front door to:

Entrance Hall

Spacious hallway with two understairs storage cupboards, stairs to first floor and gallery landing.

Doors leading to:

Cloakroom

Comprising wc, corner wash hand basin, window to front, radiator.

Study

3.55m x 2.97m (11'7" x 9'9"). Window to front, window side, radiator.

Lounge

4.42m x 6.08m (14'6" x 19'11"). French doors opening to rear, window to front, electric feature fire place, two radiators.



Dining Room

3.13m x 3.55m (10'3" x 11'7"). Window to side, radiator.

Kitchen Breakfast Room

4.96m x 3.57m (16'3" x 11'8"). Comprising a range of base and eye level units with worktops over, integral fridge, sink, space and plumbing for dishwasher, built in oven and grill, electric hob, space for fridge freezer, radiator, window to side, window to rear garden.

Inner Lobby

Radiator, door to rear garden, door to:

Utility Room

3.02m x 1.83m (9'11" x 6'). Refitted and comprising floor to ceiling storage cupboards, eye level storage cupboards, worktop space, sink, space for fridge and freezer, plumbing for washing machine, space for tumble dryer, window to side, radiator.

Stairs to First Floor and Gallery Landing

Two windows to rear, loft access, airing cupboard, radiator.

Master Bedroom

5.23m x 4.42m (17'2" x 14'6"). Window to front, two radiators, air conditioning and heating unit, built in double wardrobe door to:

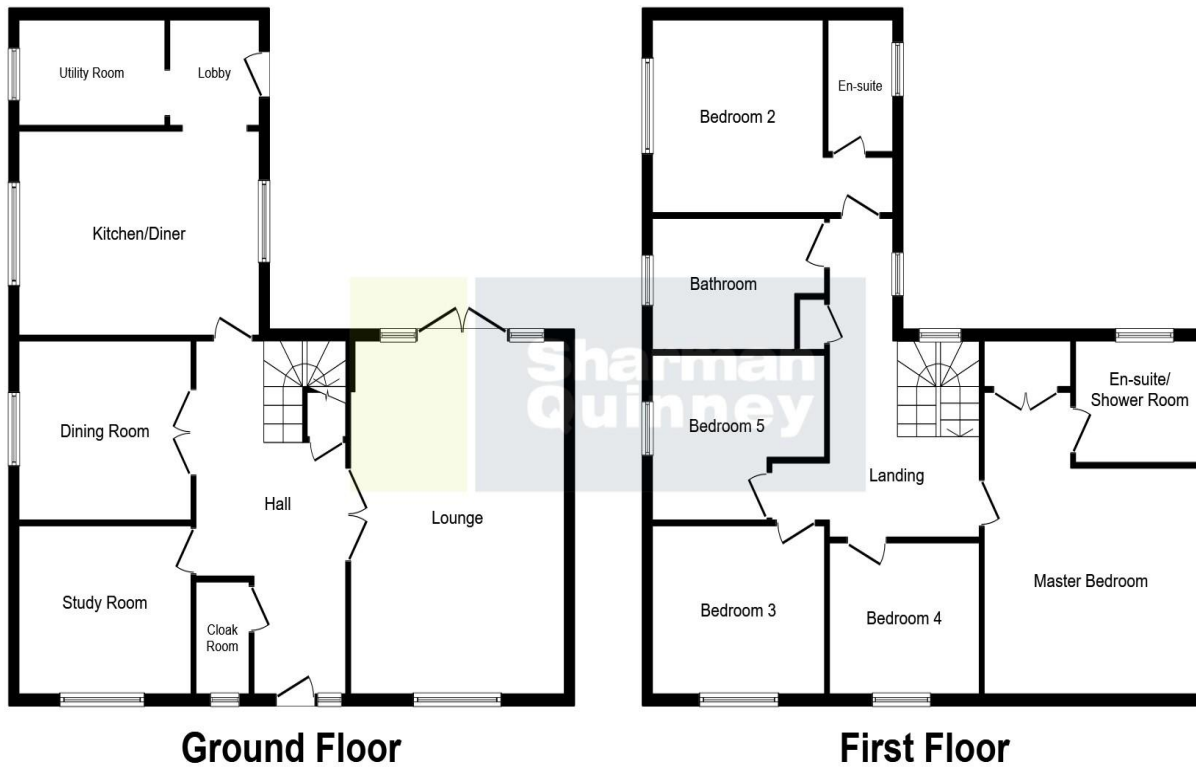
Ensuite

2.56m x 1.85m (8'4" x 6'1"). Comprising panel bath with mixer tap shower, wc, pedestal wash hand basin, radiator, window to rear.

Bedroom Two

4.96m x 3.62m (16'3" x 11'10"0. Window to side, radiator, door to:





This floor plan is for illustrative purposes only. It is not drawn to scale. Any measurements, floor areas (including any total floor area), openings and orientation are approximate. No details are guaranteed, they cannot be relied upon for any purpose and they do not form part of any agreement. No liability is taken for any error, omission or misstatement. A party must rely upon its own inspection(s). Plan produced for Sharman Quinney. Powered by www.focalagent.com

Ensuite
Shower cubicle, wc, pedestal wash hand basin, window to rear, radiator.

Bedroom Three
2.99m x 3.60m (9'9" x 11'9"). Window to front, radiator.

Bedroom Four
2.66m x 3.45m (8'8" x 11'4"). Window to front, radiator.

Bedroom Five
3.59m x 2.89m (11'9" x 9'5"). Window to side, radiator.

Family Bathroom
3.59m x 2.29m (11'9" x 7'6"). Comprising shower cubicle, panel bath, wc, pedestal wash hand basin, radiator, window to side.

Outside
The rear garden which offers privacy overlooking open fields is laid to lawn with shrubs and plants, paved patio area and raised decked area. The garden is enclosed with timber fence surround and rear gate access. A self contained area within the garden adjacent to the property contains the oil tank and has a gate to the front garden. To the front the garden is laid to lawn with a driveway to the rear providing parking for several vehicles leading to a double garage with twin metal up and over doors, power and light connected and courtesy door leading to the rear garden.

To view this property call Sharman Quinney on:
01778 343322

Selling your property?

Contact us to arrange a **FREE** home valuation.

 01778 343322

 25 Market Place, Market Deeping,
PETERBOROUGH, Cambridgeshire, PE6 8EA

 marketdeeping@sharmanquinney.co.uk

 www.sharmanquinney.co.uk



 SCAN ME



Sharman Quinney Holdings Limited is registered in England and Wales under company number 4174227, Registered Office is Cumbria House, 16-20 Hockliffe Street, Leighton Buzzard, Bedfordshire, LU7 1GN. VAT Registration Number is 500 2481 05.

1: These particulars do not constitute part or all of an offer or contract. 2: The measurements indicated are supplied for guidance only and as such must be considered incorrect. 3: Potential buyers are advised to recheck the measurements before committing to any expense. 4: Sharman Quinney has not tested any apparatus, equipment, fixtures, fittings or services and it is the buyers interests to check the working condition of any appliances. 5: Sharman Quinney has not sought to verify the legal title of the property and buyers must obtain verification from their legal representative. 6: Intending purchasers will be asked to produce identification documentation at a later stage and we would ask your co-operation in order that there will be no delay in agreeing the sale. Ref: MRD204535 - 0006

