



ADMIRAL HOUSE, SW8

£625,000

This bright and spacious two bedroom apartment is on the 8th floor within St George Wharf. Recently renovated with a modern kitchen and stylish bathroom. The apartment features a generous reception room, two double bedrooms and a large bathroom.

- 2 Bedrooms
- 756 Sq. Ft
- 8th Floor
- 24hr Concierge

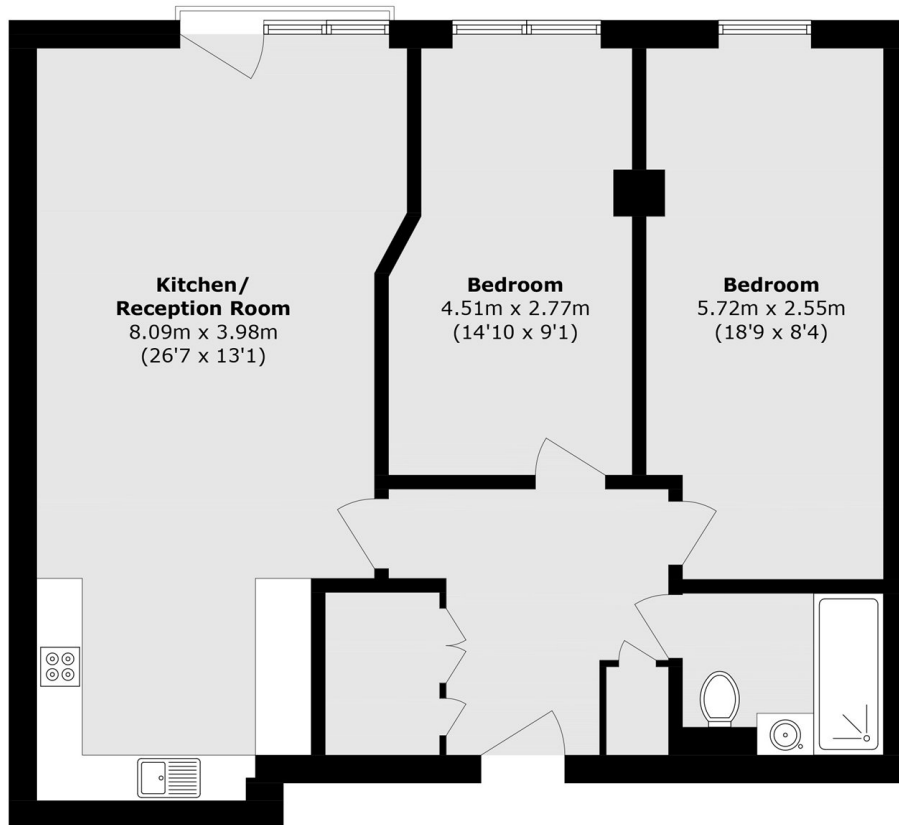


ABOUT THE HOME

Residents enjoy a 24-hour concierge, on-site restaurants, bars, and gym, plus excellent transport links just 0.1 miles from Vauxhall Underground and National Rail.







Total area (approx.): 70.3 sq. m (756.7 sq. ft)

LiFE RESIDENTIAL

11 Flagstaff House, London,
SW8 2LZ

Sales: 020 7476 1408

Lettings: 020 7582 7989

Energy Rating: C. We aim to make our particulars both accurate and reliable. However they are not guaranteed; nor do they form part of an offer or contract. If you require clarification on any points then please contact us, especially if you're traveling some distance to view. Please note that appliances and heating systems have not been tested and therefore no warranties can be given as to their good working order.