



**MK**  
ESTATES

30 South Road, Bournemouth  
£90,000

# 30 South Road

Bournemouth, Bournemouth

Council Tax band: A

Tenure: Leasehold

EPC Energy Efficiency Rating: C

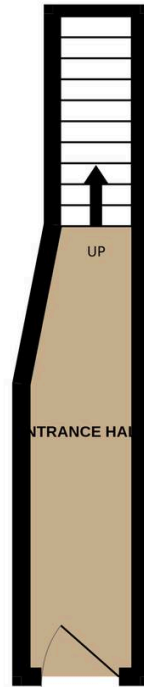
EPC Environmental Impact Rating: C

- No Forward Chain
- Property Requires Modernisation
- First Floor Character Converted Flat
- Lease - 58 Years Remaining
- One Double Bedroom
- Lounge & Separate Fitted Kitchen
- Family Bathroom Suite
- Service Charge - As & When Basis (Split 50/50)
- Easy Reach To Boscombe & Southbourne High Street Providing Shops, Bars, Restaurants
- Short Distance To Parks, Leisure Facilities & Award Winning Beaches

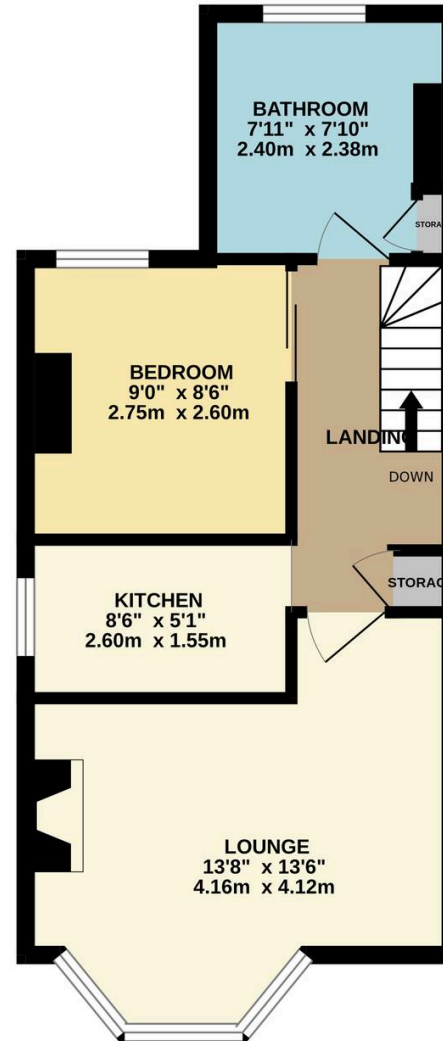




GROUND FLOOR  
72 sq.ft. (6.7 sq.m.) approx.



1ST FLOOR  
369 sq.ft. (34.3 sq.m.) approx.



TOTAL FLOOR AREA: 441 sq.ft. (41.0 sq.m.) approx.

Whilst every attempt has been made to ensure the accuracy of the floorplan contained here, measurements of doors, windows, rooms and any other items are approximate and no responsibility is taken for any error, omission or mis-statement. This plan is for illustrative purposes only and should be used as such by any prospective purchaser. The services, systems and appliances shown have not been tested and no guarantee as to their operability or efficiency can be given.

Made with Metropix ©2026