



Tiffany Court, Stoneygate, Leicester

£160,000 Leasehold

Stylish and spacious first-floor flat in the heart of Stoneygate, featuring stunning rear views, modern interiors, secure intercom access, parking, and a garage.

Council Tax band: B

Tenure: Leasehold

EPC Energy Efficiency Rating: C



Knightsbridge
Estate Agents

0116 274 5544





Entrance Hall

Double-glazed window to the side elevation, loft access, built-in storage cupboard, and a radiator.

Sitting Room

15' 11" x 13' 11" (4.86m x 4.23m)

With two double-glazed windows to the front elevation and a radiator.

Kitchen

11' 10" x 7' 6" (3.60m x 2.28m)

with a double-glazed window to the rear elevation. Includes a stainless steel sink and drainer unit, a range of wall and base units with work surfaces over, a built-in oven and electric hob with extractor hood over, a built-in fridge and freezer, a built-in dishwasher, a breakfast bar, a radiator, and plumbing for a washing machine.



Bedroom One

14' 9" x 12' 5" (4.49m x 3.78m)

with two double-glazed windows to the front elevation, built-in wardrobes, and a radiator.

Bedroom Two

15' 5" x 9' 11" (4.70m x 3.03m)

with a double-glazed window to the rear elevation, wardrobes, and a radiator.

Shower Room

11' 1" x 5' 11" (3.39m x 1.81m)

with a double-glazed window to the rear elevation. Includes a walk-in double shower cubicle with an overhead rainfall shower and a handheld shower, a wash hand basin, a low-level WC, inset ceiling spotlights, and an extractor fan.

Off-Street Parking

Space for parking in front of the garage.

Garage

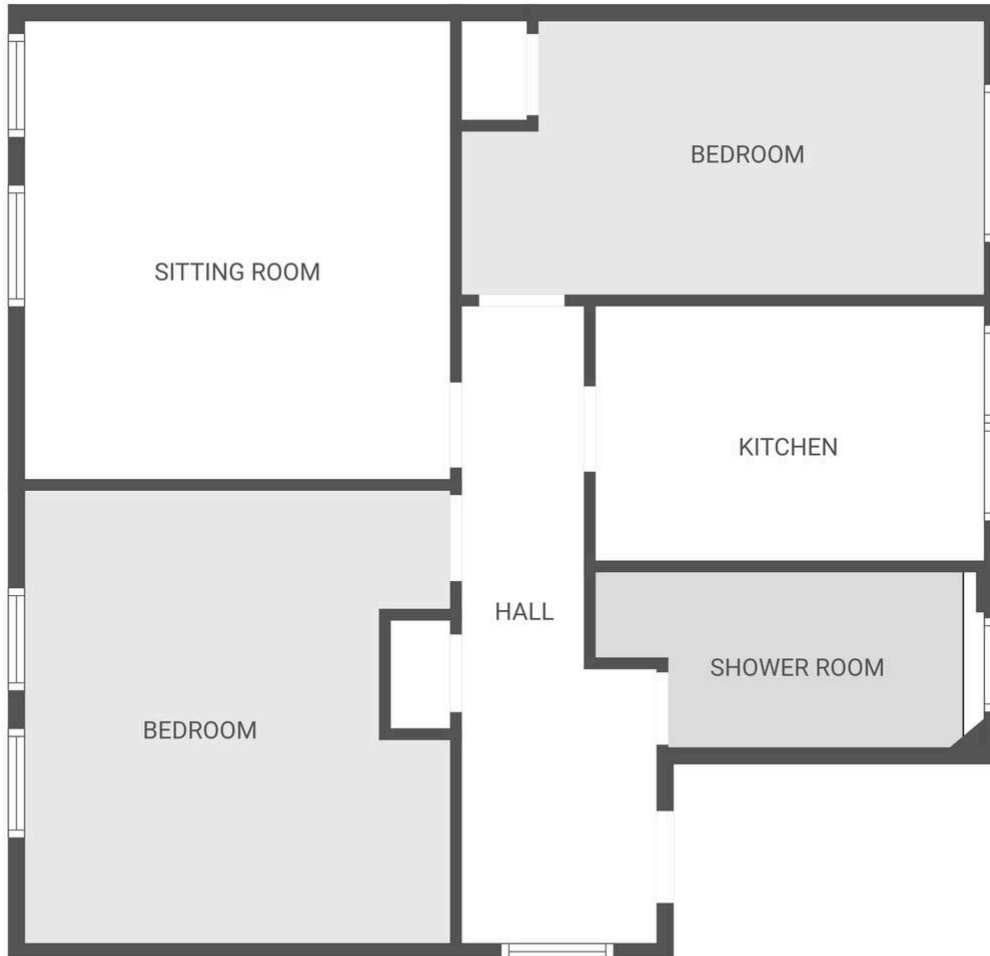
Located beneath the block of flats, measuring 4.9m x 2.5m with an up-and-over door to the front elevation, power, and lighting.

Lease information:

135 Years Remaining on the Lease

Service Charge: £2032 Per Year

Ground Rent: £0 Per Year.



FLOOR PLAN CREATED BY CUBICASA APP. MEASUREMENTS DEEMED HIGHLY RELIABLE BUT NOT GUARANTEED.

We'll keep you moving...



We must inform all prospective purchasers that the measurements are taken by an electronic tape and are provided as a guide only and they should not be used as accurate measurements. We have not tested any mains services, gas or electric appliances, or fixtures and fittings mentioned in these details, therefore, prospective purchasers should satisfy themselves before committing to purchase. Intending purchasers must satisfy themselves by inspection or otherwise to the correctness of the statements contained in these particulars. Knightsbridge Estate Agents & valuers (nor any person in their employment) has any authority to make any representation or warranty in relation to the property. The floor plans are not to scale, and are intended for use as a guide to the layout of the property only. They should not be used for any other purpose. Similarly, the plans are not designed to represent the actual décor found at the property in respect of flooring, wall coverings or fixtures and fittings.