



**28 Byron Court, Windsor, Berkshire, SL4 4PU**  
**£295,000**

 **HORLER**

## 28 Byron Court, Windsor, Berkshire, SL4 4PU

\*\*\*No Chain\*\*\*

This property is located within a gated development of the prestigious Byron Court in Windsor, and comes with private allocated parking, this charming two-bedroom apartment offers a perfect blend of comfort and security. Set within a gated development, residents can enjoy peace of mind while being just a stone's throw away from the vibrant heart of Windsor.

The location is particularly advantageous, as it is within walking distance to a variety of local amenities, including shops, cafes, and parks. Furthermore, excellent transport links are readily available, making commuting to nearby towns and cities a breeze. With its great rental potential, this apartment presents an attractive opportunity for those looking to invest in the vibrant Windsor property market.



### **Property Summary**

The apartment boasts a well-designed layout, making the most of its space. The living area is bright and inviting, providing an ideal setting for relaxation or entertaining guests. The two bedrooms are generously sized, offering ample storage and a tranquil retreat at the end of the day.

One of the standout features of this property is the allocated off-street parking within a gated development, a rare find in such a desirable location.

Situated within walking distance to the town centre this property is the perfect purchase for anyone looking for an high quality home in a great location.

### **General information**

Share of Freehold

Lease remaining: 988 Years

Service Charge: £1608 Per annum

Potential rental value of £1500 per month

Council Tax: Band D

### **Legal note**

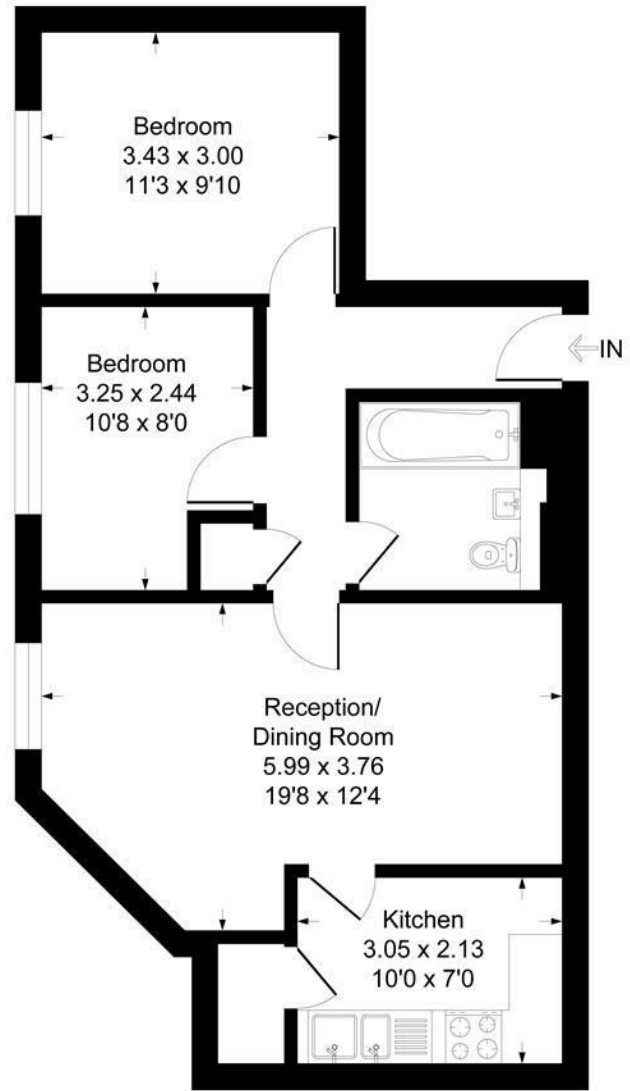
\*\*\*Although these particulars are thought to be materially correct their accuracy cannot be guaranteed and they do not form part of any contract\*\*\*





# Byron Court SL4

Approximate Gross Internal Floor Area = 58.4 sq m / 629 sq ft



## Top Floor

Illustration for identification purposes only, measurements are approximate, not to scale.  
Produced By Esjay Property Marketing