



• mcgowan homes •

34 Reed Close, Bolton



- Two Bed First Floor Apartment In Good Order Throughout
- Gas Central Heated / uPVC Double Glazed Windows
 - Lounge With Open Plan To Kitchen
 - Three-Piece Bathroom
- Communal Resident Parking And Gardens

£105,000

Two bed first floor apartment in very good order throughout. Briefly comprising of gas central heating, uPVC double glazed windows, lounge with open plan to kitchen, two bedrooms and a three-piece bathroom. Externally are communal resident parking and gardens. Please note there is an annual service charge of £650.00 which is paid in monthly instalments and an annual ground rent of £125.00.

Situated in the Farnworth area of Bolton with easy access to local shops, facilities, transport links and the M60, M62 & M61 motorway networks.

ENTRANCE

Communal resident entrance with intercom access. Staircase to the first floor.

HALL

Entrance hall with radiator.

LOUNGE

5.19m x 3.00m (17'0" x 9'10")

Front aspect with laminated wooden flooring and two radiators. Open plan to kitchen.



KITCHEN

2.63m x 2.23m (8'7" x 7'3")

Side aspect with a range of wall and base units incorporating one and a half bowl stainless steel sink, gas hob with stainless steel extractor above, built in electric oven, space for washing machine, laminated wooden flooring and spotlights.



BEDROOM 1

3.68m x 3.19m (12'0" x 10'5")

Front aspect with fitted cupboards, carpet flooring and radiator.



BEDROOM 2

3.0m x 2.06m (9'10" x 6'9")

Side aspect with carpet flooring and radiator.



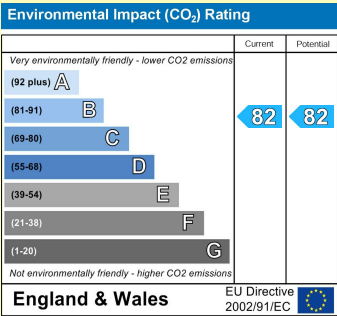
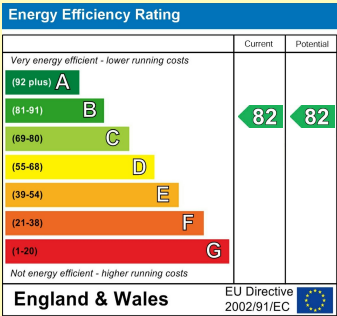
BATHROOM

Three-piece bathroom comprising of bath with shower over, sink, low-level W.C and part tiled walls.



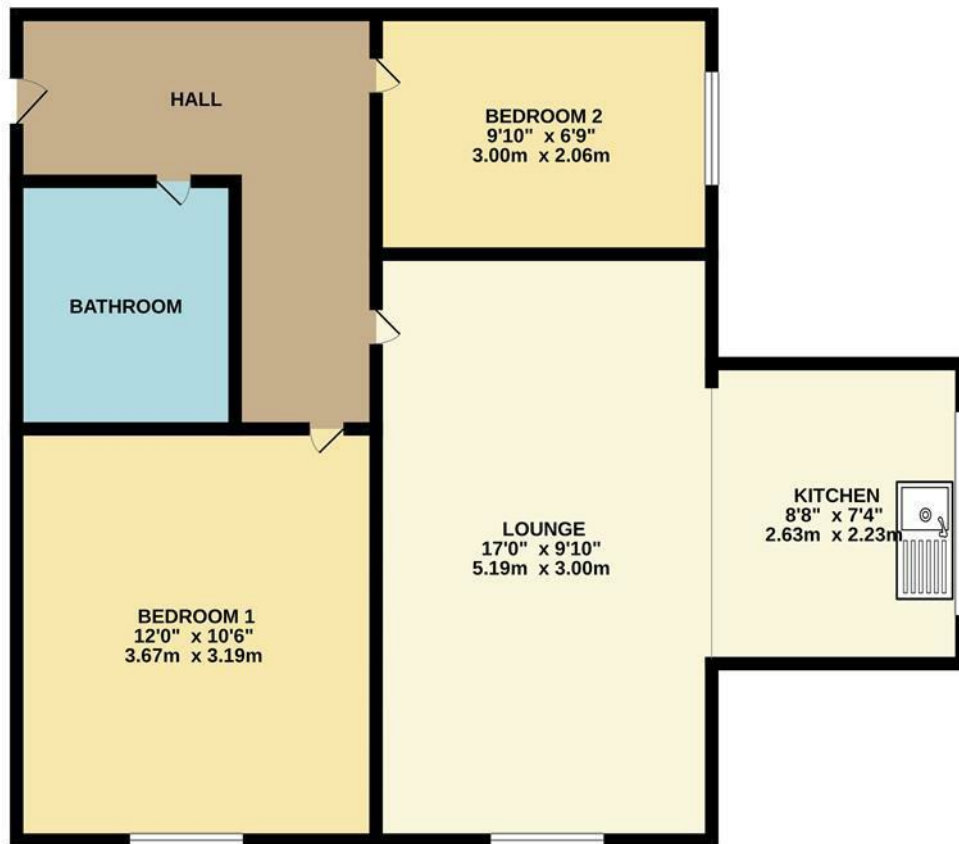
OUTSIDE

Externally are communal resident parking and gardens.



PLEASE NOTE: We have not checked the efficiency or operation of any services (Gas, Water, Electricity or Drainage) or any electrical, mechanical or heating appliances. All measurements taken via a sonic measure. Measurements should only be used as a guide and not for ordering any floor coverings or carpets. **Viewing Strictly By Appointment Only**

GROUND FLOOR
550 sq.ft. (51.1 sq.m.) approx.



TWO BED FIRST FLOOR APARTMENT

TOTAL FLOOR AREA: 550 sq.ft. (51.1 sq.m.) approx.

Whilst every attempt has been made to ensure the accuracy of the floorplan contained here, measurements of doors, windows, rooms and any other items are approximate and no responsibility is taken for any error, omission or mis-statement. This plan is for illustrative purposes only and should be used as such by any prospective purchaser. The services, systems and appliances shown have not been tested and no guarantee as to their operability or efficiency can be given.
Made with Metropix ©2025

THINKING OF SELLING?

To find out why more homeowners are moving with McGowan Homes & Property Services, contact us for a free market appraisal of your home. We pride ourselves on a professional, efficient and friendly service. Let US take the worry out of your move.

TELEPHONE
0161 655 4113

YOUR HOME IS AT RISK IF YOU DO NOT KEEP UP REPAYMENTS ON A MORTGAGE OR OTHER LOANS SECURED ON IT.

43 Middleton Gardens, Middleton, Manchester M24 1AB

Telephone: 0161 655 4113

www.mcgowanhomes.co.uk

The above particulars are believed to be correct, but are not guaranteed, and form no part of any contract. No responsibility in respect of these particulars, which are supplied for guidance only and without liability, can be accepted by McGowan Home & Property Services, not by their clients, and any intending purchaser or lessee must satisfy himself by inspection or otherwise to the accuracy of all details contained therein. All property offered subject to availability. The Supply of Goods and Services Act 1982, does not apply to this brochure.