



Coopers

Coopers

Sherbourne Crescent, Coundon, Coventry CV5 8LF

Price: £280,000



Sherbourne Crescent

Coundon, Coventry

Superb open-plan kitchen diner – ideal for hosting – standout garden with patio and pergola – smart, move-in ready home in a really convenient spot

Council Tax band: C

Tenure: Freehold

EPC Energy Efficiency Rating: D

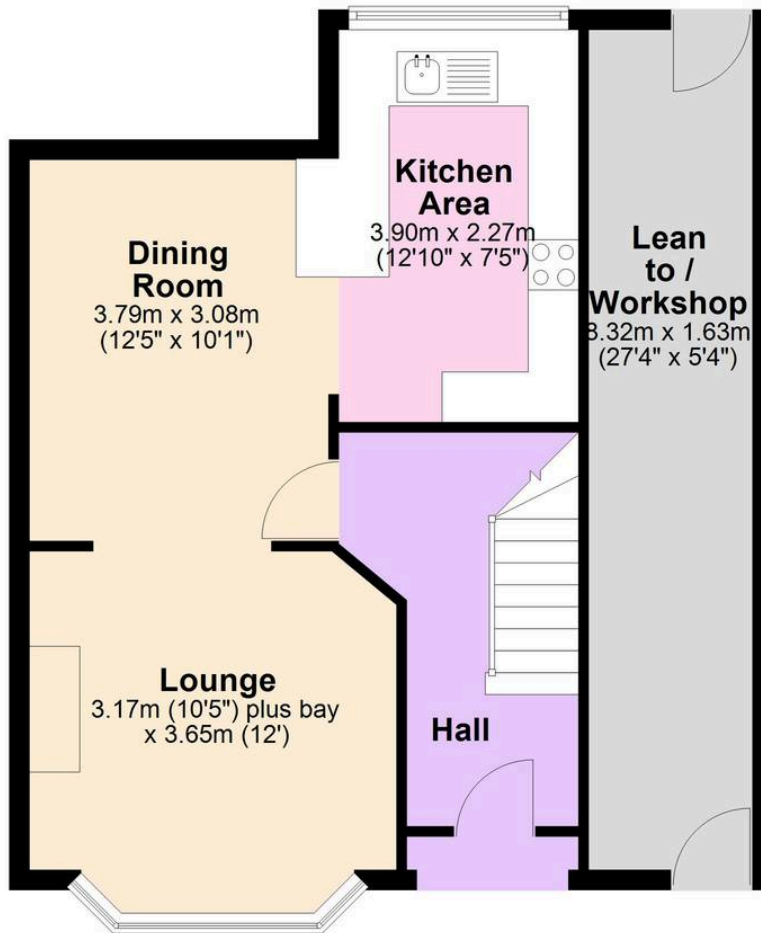
- Superb open-plan kitchen dining space across the rear
- Quartz worktops and breakfast bar in the kitchen
- LVT flooring throughout the ground floor
- Comfortable front lounge with feature brick fireplace
- Three well-proportioned bedrooms
- Modern family bathroom
- Attractive rear garden with patio and pergola
- Useful side lean-to / workshop space
- Easy access to Holyhead Road, A45 and city centre
- Nearby local shops including Holyhead Road





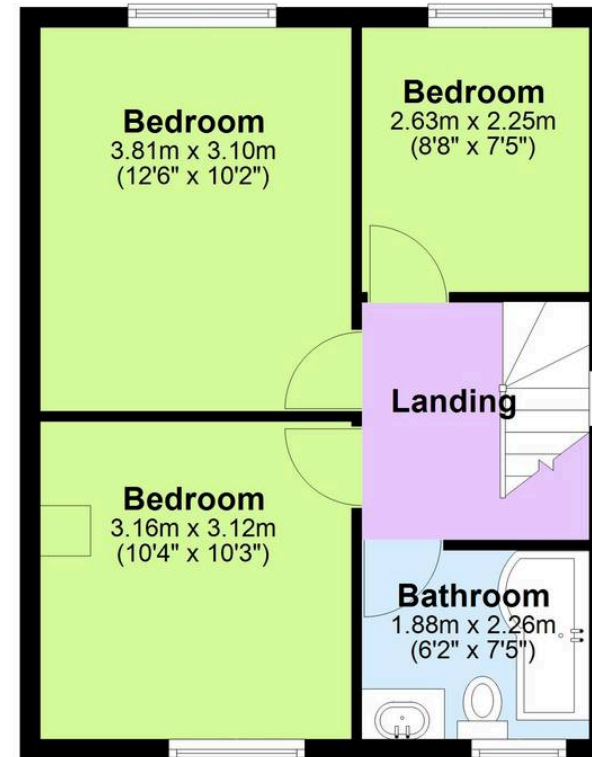
Ground Floor

Approx. 56.4 sq. metres (606.7 sq. feet)



First Floor

Approx. 38.6 sq. metres (415.7 sq. feet)



"Floor plan measurements are approximate and are for illustrative purposes only. While every effort is made to ensure accuracy, no responsibility is taken for any error, omission, or misstatement. Do not scale from this plan.
Plan produced using PlanUp.□□

Coopers Estate Agents

Coopers, 22 New Union Street - CV1 2HN

Coopers

024 7655 2841 • sales@coopersstateagents.com • www.coopersstateagents.com/

Coopers Chartered Surveyors Ltd, 22 New Union Street, Coventry, West Midlands

CV1 2HN, 024 7655 2841, sales@coopers-cov.com. Company Registration

Number: 6725089 / VAT number: 940 3555 34