

For Sale



LCP/PrivateOffice  
est.1990

Orsett Terrace, Paddington W2

+44 (0) 207 723 1733 / sales@lcpprivate.com

£500,000

# Orsett Terrace, Paddington W2

£500,000

An attractive, southeast facing, second floor flat to the front of a Grade II Listed, stucco front building close to Paddington that benefits from both lift and caretaker.

The accommodation briefly comprises an open plan kitchen / reception room, bedroom with fitted cupboards and a family bathroom.

Orsett Terrace is located between Porchester Square and Paddington Station, therefore close to transport including the national rail network, Heathrow Express, the new Elizabeth Line and Bakerloo, Circle & District underground lines. It is also convenient for the open space of Kensington Gardens and Hyde Park.

**Asking Price:** £500,000 STC

**Lease:** Share of Freehold

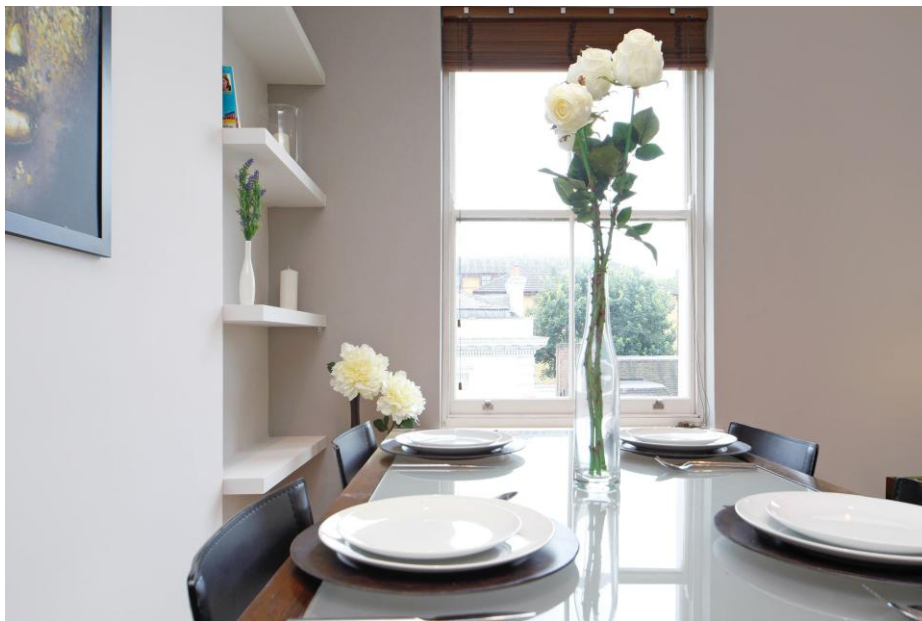
**Council Tax:** Westminster Band D

**Service Charge:** £3,593.64 per annum

**Ground Rent:** Peppercorn

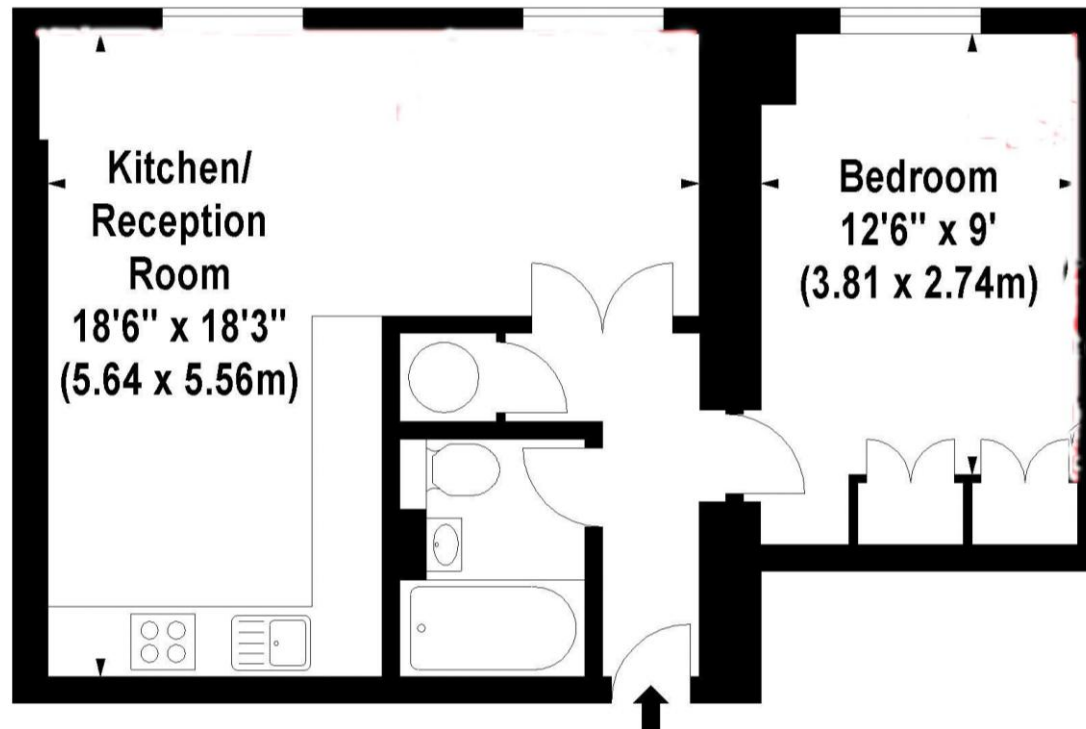
**EPC Rating:** Band D





# Orsett Terrace, W2

Approx. Gross Internal Area \*  
494 Sq Ft - 45.89 Sq M



**Second Floor**

Please note none of the statements contained in these particulars as to this property are to be relied on as statements or representation of fact. It should also be noted that amenities and appliances have not been tested.

Orsett Terrace, Paddington W2



# LCP

est.1990

+44 (0)207 723 1733  
LCP House, Ogle Street,  
London, W1W 6HU

[contact@lcpprivate.com](mailto:contact@lcpprivate.com)