



## Strathray Gardens, NW3

£2,250 Per calendar month

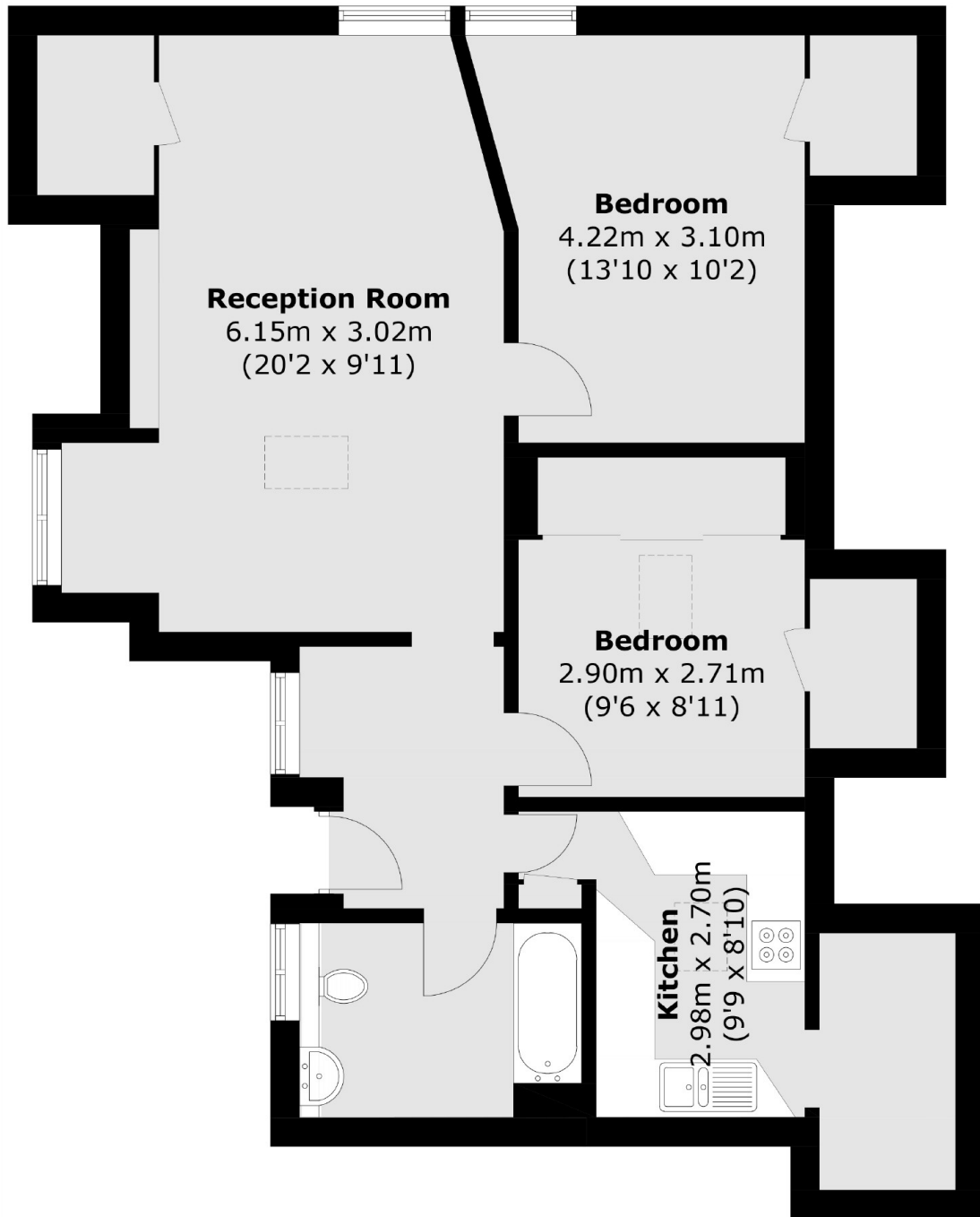
A two bedroom apartment on the top floor of this period house on quiet leafy street. There are two good sized double bedrooms, a spacious reception room and a separate kitchen.

Located under a mile away from Haverstock Hill where you will find a range of different bars and restaurants. The popular Everyman Cinema is also a great place to grab a cocktail whilst watching the latest movie.

### Features

- Two Double Bedrooms
- Wood Floors
- Separate Kitchen
- Bright Reception
- Top Floor
- Period Conversion

# Strathray Gardens, London, NW3



Total area (approx.): 78.4 sq. m (843.8 sq. ft)