

Flat 28, Yeomanry Court, 90 Whalley Road, Whalley Range, Manchester, M16 8AZ



Your
Yeomanry
Court

JP&Brimelow
ESTATE AGENTS

Offers In The Region Of £145,000

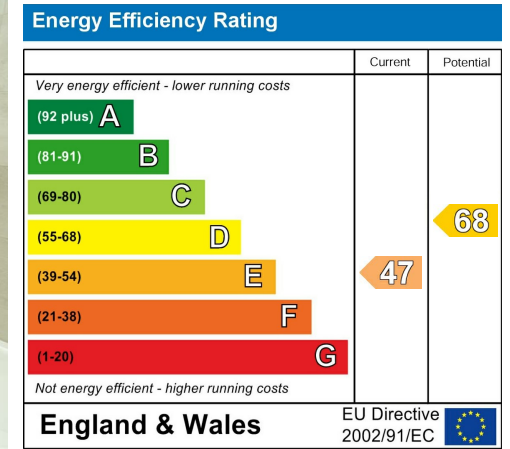


VIDEO TOUR AVAILABLE A delightful and immaculately presented, ONE DOUBLE BEDROOM, ground floor apartment. Situated within this purpose-built development in Whalley Range, off Whalley Road. The property is close to several primary schools, including the Ofsted outstanding Manley Park Primary School, the Hilary Step Bar and Nip and Tiddle on Upper Chorlton Road, Alexandra Park, the local amenities of Chorlton and is ideally located for transport links to Media city either by Metrolink or by bus which you can get on from Upper Chorlton Road. In brief the well-planned accommodation consists of; a communal entrance hall with stairs leading to all floors, a private entrance hall with useful storage cupboard, a good-sized double bedroom, a large lounge/diner, a modern fully fitted kitchen, and a white three-piece shower room completing this lovely apartment. The apartment benefits from; an intercom system, electric heating, and communal off-road parking.



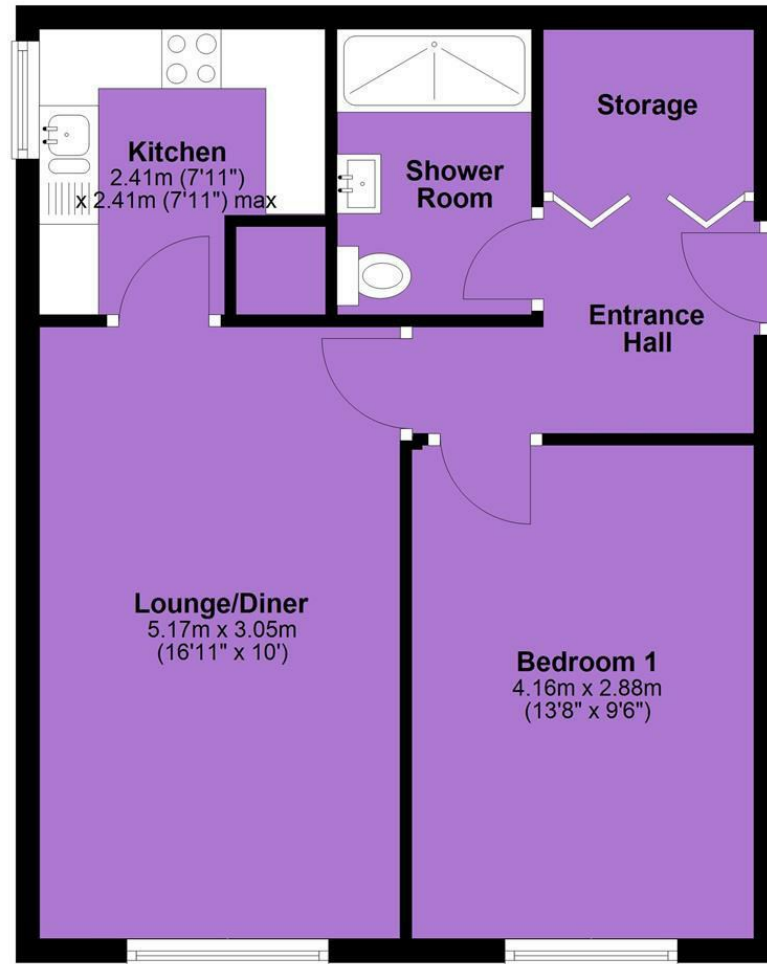


EPC Chart



Tenure: **Leasehold** Council Tax Band: **A**

Ground Floor



JP & Brimelow Estate Agents Ltd
430 Barlow Moor Road, Manchester, M21 8AD
Tel: 0161 8822233
E: sales@jpbrimelow.co.uk www.jpandbrimelow.co.uk



JP & Brimelow
ESTATE AGENTS

NOTICE: JP & Brimelow Estate Agents Ltd for themselves and for the vendors or lessors of this property whose agents they are give notice that:

- (i) the particulars are set out as a general outline only for the guidance of intending purchasers or lessees, and do not constitute, nor constitute part of, an offer or contract;
- (ii) all descriptions, dimensions, references to the condition and necessary permissions for use and occupation, and other details are given in good faith and are believed to be correct but any intending purchasers or tenants should not rely on them as statements or representations of fact but must satisfy themselves by inspection or otherwise as to the correctness of each of them;
- (iii) no person in the employment of JP & Brimelow Estate Agents Ltd has any authority to make or give any representation or warranty whatever in relation to this property.

jpandbrimelowstateagents

@jpandbrimelow