



Barrier Point Road, E16

£475,000

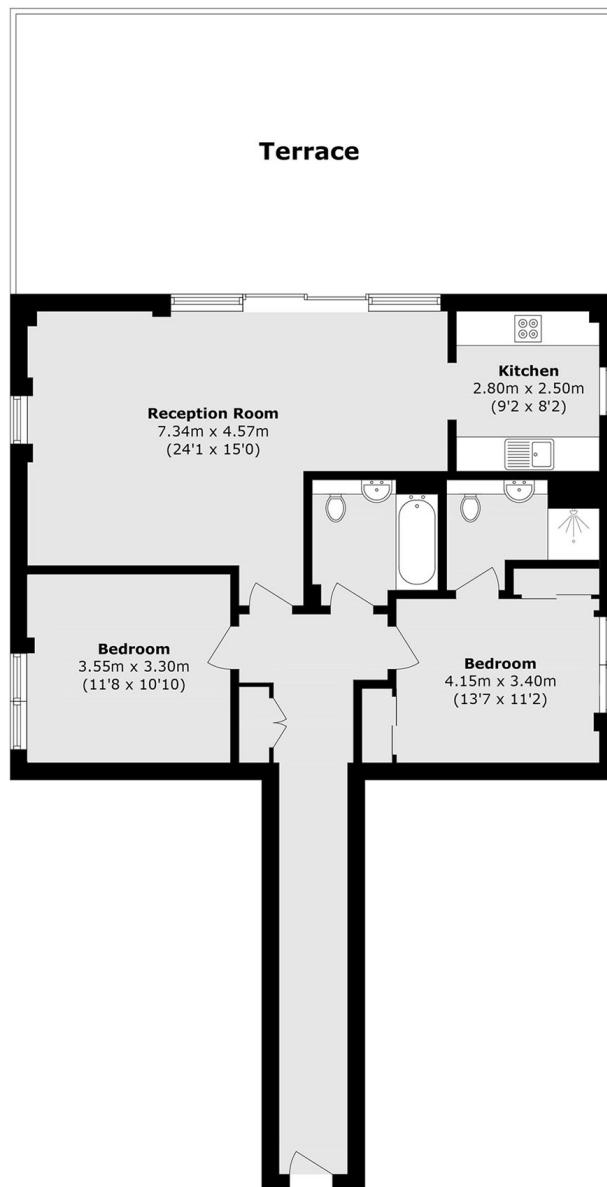
Presented to the market, this two-bedroom home offers 942 sq ft of internal living space, complemented by an impressive 527 sq ft private terrace. The property features a dual-aspect reception room, two bathrooms, access to a residents' gym, a 24-hour concierge service and allocated parking.

The apartment is situated within the sought-after Barrier Point development, directly opposite Barrier Park and the riverside walkway. It is also conveniently located close to the local shops, restaurants and cafés of nearby Royal Wharf.

Features

- 942 Square Feet
- Large Private Terrace
- Allocated Parking
- Concierge Service
- Residents Gym
- Gated Development

Barrier Point Road, London, E16



Total area (approx.): 87.6 sq. m (942.9 sq. ft)
Terrance area (approx.): 49.0 sq. m (527.4 sq. ft)