



**Quadrant Estate Agents**

**£475,000**



**Burns Crescent, Bicester, OX26 2YS**  
**3 Bedrooms & 1 Bathrooms**

- Freehold
- EPC Rating - E
- Construction - Standard
- Mains Electricity
- Mobile Phone Coverage - Please check using the Ofcom Website
- Council Tax Band - D
- Council - Cherwell District Council
- Mains Water
- Mains Gas
- Internet Coverage - Please check using Ofcom Website

01869 241166

[quadrantestateagents.co.uk](http://quadrantestateagents.co.uk)

10 Market Square, Bicester, OX26 6AD



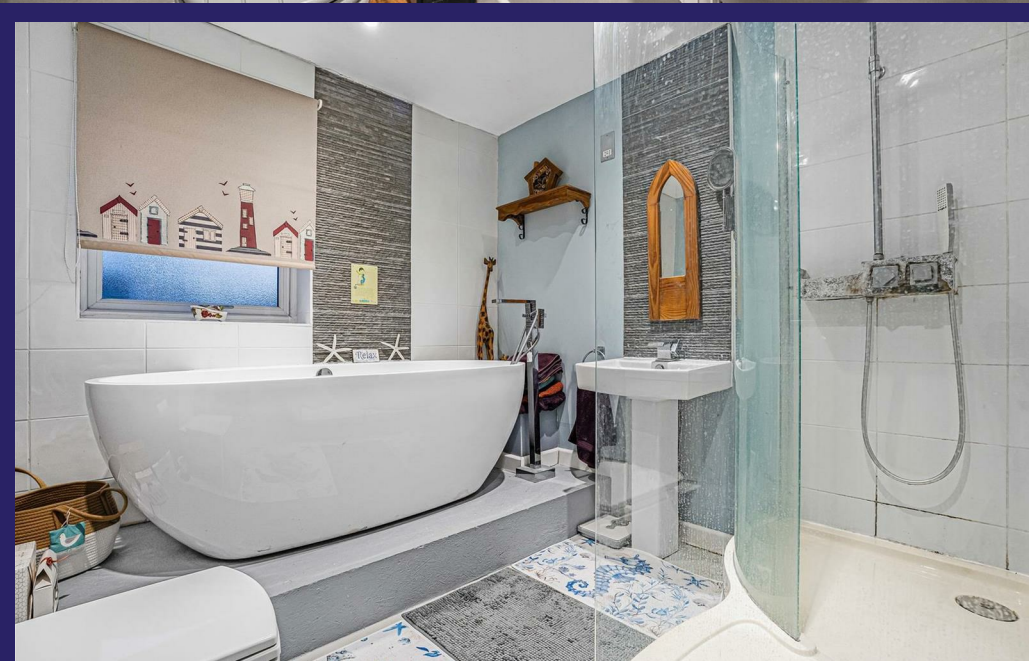




01869 241166  
quadrantestateagents.co.uk  
10 Market Square, Bicester, OX26 6AD







01869 241166  
[quadrantestateagents.co.uk](http://quadrantestateagents.co.uk)  
 10 Market Square, Bicester, OX26 6AD





**Approximate Gross Internal Area 1691 sq ft - 157 sq m  
(Including Garage)**

Ground Floor Area 1132 sq ft – 105 sq m

First Floor Area 559 sq ft – 52 sq m

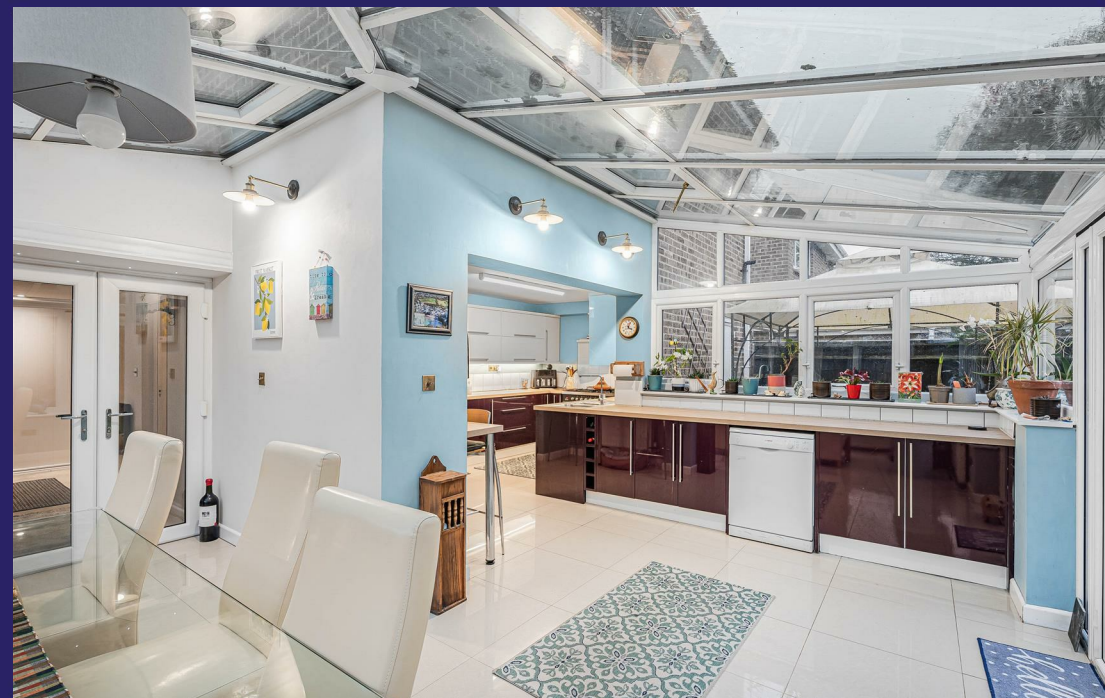


Located on the popular Kings Meadow development, this charming home offers a perfect blend of comfort and convenience. With its deceptively spacious layout, the property boasts inviting reception room, open plan kitchen leading through to a light and airy Conservatory/dining area, study and cloakroom. The three well-proportioned double bedrooms provide ample space for family living, four piece family bathroom completes the upstairs accommodation.

Situated in a sought-after location, this home is just a stone's throw away from a primary school, making it an excellent choice for families. The proximity to the town centre means that all essential amenities, including shops, cafes, and recreational facilities, are easily accessible. For those who commute, the property benefits from close access to motorway links and a mainline train station, providing excellent transport options for both work and leisure.

Outside there is a driveway providing off road parking for 2/3 vehicles leading to a single garage, generous size low maintenance private rear garden with wooden decked patio area.

An early appointment to view comes very highly recommended.



**IMPORTANT:** We would like to inform prospective purchasers that these sales particulars have been prepared as a general guide only. A detailed survey has not been carried out, nor the services, appliances and fittings been tested. Room sizes should not be relied upon for furnishing purposes; they are approximate. If floor plans are included, they are for guidance only and illustration purposes only and may not be to scale. If there are any important matters likely to affect your decision to buy, please contact us before viewing the property.

01869 241166

[quadrantestateagents.co.uk](http://quadrantestateagents.co.uk)

10 Market Square, Bicester, OX26 6AD

