



Duck Lane, Soho, W1F
£550 pw

› Studio › 1 Bathroom › Unfurnished

TAVISTOCKBOW
RESIDENTIAL



- > Studio
- > One bathroom
- > 1st floor (no lift)
- > Modern
- > Period building
- > Unfurnished
- > Available immediately
- > Ensuite shower room
- > Wooden flooring throughout
- > Close to Oxford Circus & Piccadilly tube

A stunning newly refurbished one bedroom flat to rent in Soho, moments from Alan Yau's famous Duck & Rice restaurant. Situated on the third floor the double bedroom & shower room are located at the rear of the building and boast fitted storage. The modern kitchen is open plan to the kitchen. Available immediately,

unfurnished, 3 year contract with a 6 months mutual break clause.

Council tax band F.



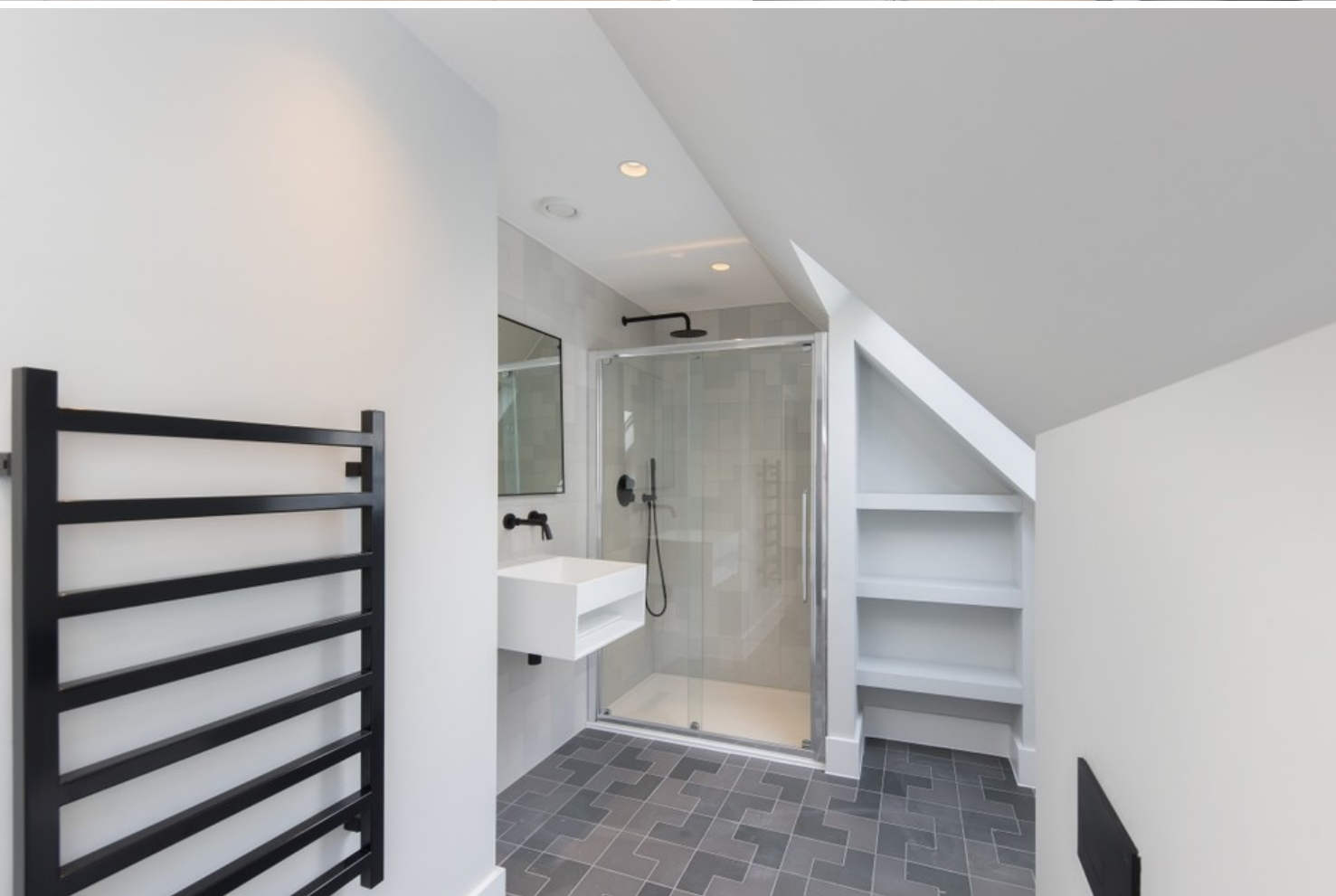


WHAT WE LOVE

Overlooks Berwick Street market
Recently refurbished
Well proportioned rooms
Close to 'Duck and Rice'
Modern kitchen.

WHAT YOU NEED TO KNOW

Walk up
Available immediately
Secondary glazing
Wooden floors throughout
Dishwasher.



Floorplan

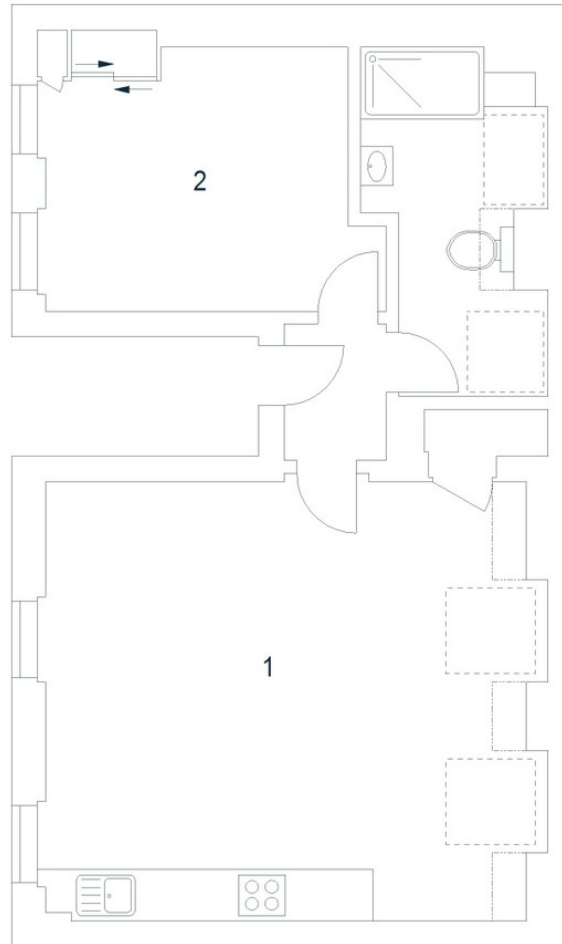
Duck Lane, W1

Approximate Gross Internal Area 54 sq m / 581 sq ft

Third Floor

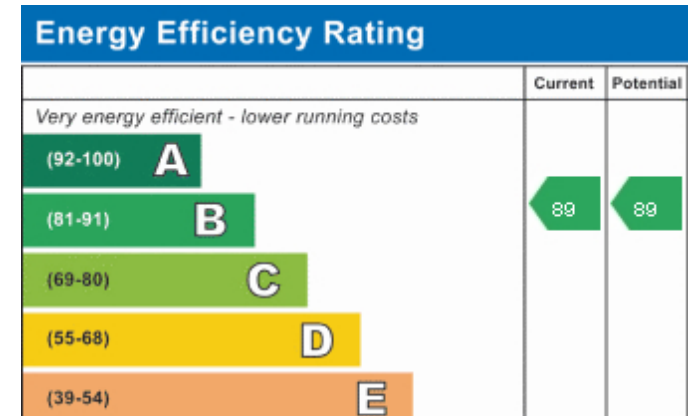
1 Kitchen /
Reception Room
6.01 x 5.16M
19'9" x 16'11"

2 Bedroom
3.65 x 3.32M
12' x 10'11"



Floor Plan produced for Tavistock Bow by Mays Floorplans © . Tel 020 3397 4594
Illustration for identification purposes only, not to scale.

EPC



About Us

Tavistock Bow is an independent residential agency based in Covent Garden. We are niche, boutique, creative, knowledgeable, professional and approachable. We love what we do and that's why we do it.

Contact Us

- a.** 21 New Row, Covent Garden, WC2N 4LE
- t.** 020 7477 2177
- e.** hello@tavistockbow.com
- w.** tavistockbow.com

