



Connells

Perth Close
Exeter



Property Description

OFFERS IN EXCESS OF £200,000. This beautifully presented and immaculately finished one bedroom home is situated in the desirable area of Pennsylvania, offering a perfect blend of comfort, style, and practicality.

Upon entering the property, you are welcomed into a bright and inviting living area, featuring a charming bay window that overlooks the garden and allows for plenty of natural light. The space is further enhanced by useful fitted storage beneath the stairs and an attractive archway opening into the kitchen. The kitchen is well-appointed with a range of wall and base units, complemented by work surfaces over and space for a selection of appliances, creating a practical and functional cooking area.

Stairs rise to the first floor, where the landing provides additional storage cupboards. From here, you will find a modern bathroom, finished to a high standard, along with a spacious double bedroom offering a comfortable and relaxing retreat.

Externally, the property benefits from its own private garden, providing an excellent outdoor space to enjoy, as well as a private allocated parking space for added convenience.

Finished to an exceptional standard throughout, this charming home is ideal for those seeking a ready-to-move-into property in a convenient and well-regarded location.

Living Room

Double glazed front aspect window, open arch to kitchen, wall mounted radiator.

Kitchen

Double glazed front aspect window, wall and base units, work surfaces, part-tiled, stainless steel sink unit, oven, gas hob and extractor over, built-in washing machine, space for fridge freezer, under stairs storage, wall mounted radiator.

Landing

Two storage cupboards, one housing boiler.

Bedroom

Double glazed front and side aspect windows, over stairs wardrobe space, wall mounted radiator.

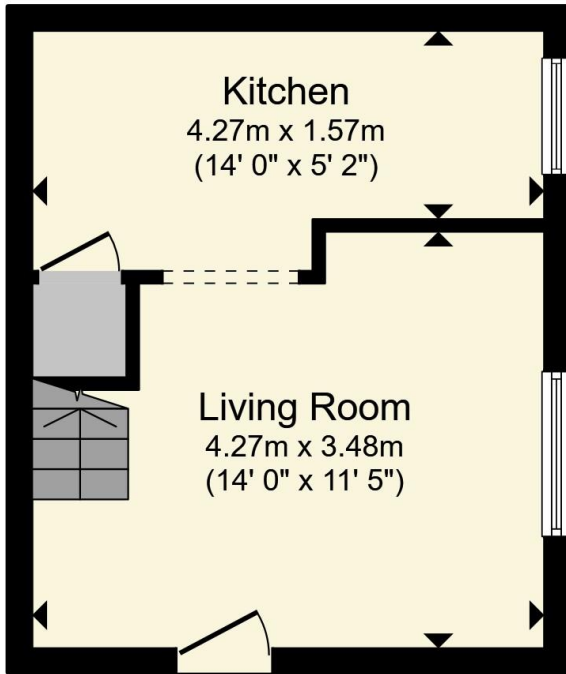
Bathroom

Double glazed front aspect window, bath, mains shower over, low level toilet, wash hand basin, wall mounted radiator.

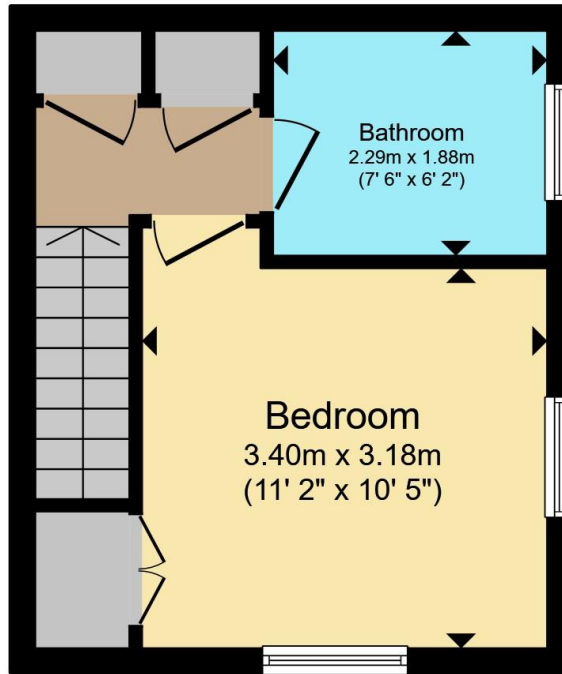
Rear Garden

Gravelled garden, enclosed by fencing.





Ground Floor



First Floor



Total floor area 44.0 m² (474 sq.ft.) approx

This floor plan is for illustrative purposes only. It is not drawn to scale. Any measurements, floor areas (including any total floor area), openings and orientation are approximate. No details are guaranteed, they cannot be relied upon for any purpose and they do not form part of any agreement. No liability is taken for any error, omission or misstatement. A party must rely upon its own inspection(s). Powered by www.propertybox.io



To view this property please contact Connells on

T 01392 221 331
E exeter@connells.co.uk

8-9 South Street
EXETER EX1 1DZ

EPC Rating: D Council Tax
Band: B

view this property online connells.co.uk/Property/EXR317726

Tenure: Freehold



1. MONEY LAUNDERING REGULATIONS Intending purchasers will be asked to produce identification documentation at a later stage and we would ask for your co-operation in order that there will be no delay in agreeing the sale. 2. These particulars do not constitute part or all of an offer or contract. 3. The measurements indicated are supplied for guidance only and as such must be considered incorrect. Potential buyers are advised to recheck measurements before committing to any expense. 4. We have not tested any apparatus, equipment, fixtures, fittings or services and it is in the buyers interest to check the working condition of any appliances.

Connells Residential is registered in England and Wales under company number 1489613, Registered Office is Cumbria House, 16-20 Hockliffe Street, Leighton Buzzard, Bedfordshire, LU7 1GN. VAT Registration Number is 500 2481 05.

See all our properties at www.connells.co.uk | www.rightmove.co.uk | www.zoopla.co.uk

Property Ref: EXR317726 - 0003