



Percy Road, TW7

£925,000

This fantastic four double bedroom Victorian home is offered to the market in excellent condition. We love the stylish interior, this is sure to be a hit with the whole family.

Within outstanding school catchments, Percy Road is a prime residential cul-de-sac within Old Isleworth, moments from the River Crane and within a quarter mile of the River Thames with its tow path walks into Richmond. Redlees Park and Syon Park are close by.

Features

- Victorian
- Four Bedrooms
- Home Office
- Two Bathrooms
- Private Garden
- Excellent Location



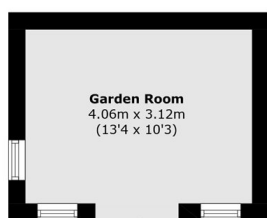
Percy Road, TW7

This property has been thoughtfully extended throughout, creating spacious living across all three floors. The ground floor offers a wide entrance hall, a spacious separate front reception room and a well designed modern kitchen dining area to the rear with direct access to the garden.

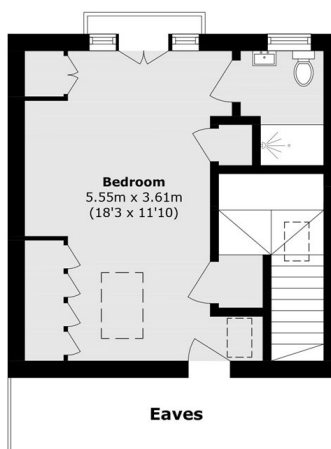
The first floor comprises two large double bedrooms and a spacious third room, ideal as a home office or alternatively a nursery. The top floor serves as a generous principal bedroom with its own en suite and offers beautiful views from the Juliet balcony.



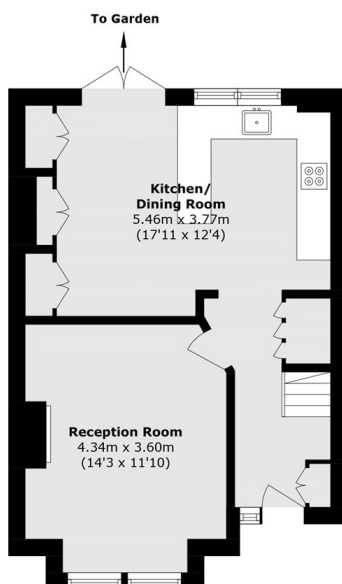
Percy Road, Old Isleworth, TW7



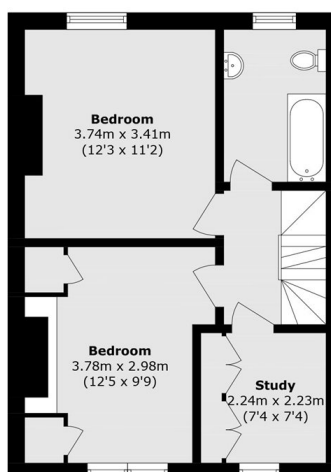
Ground Floor



Second Floor



Ground Floor



First Floor

Total area (approx.): 114.1 sq. m (1228.1 sq. ft)

Outbuilding area (approx.): 12.6 sq. m (135.6 sq. ft)

(Excluding Eaves)