


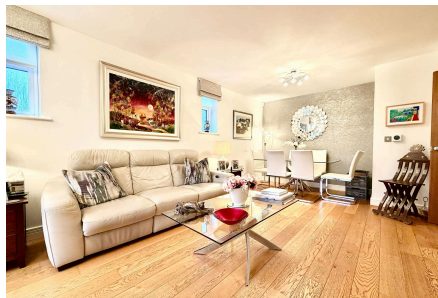


Finch Lane, Bushey

Offers Over £575,000

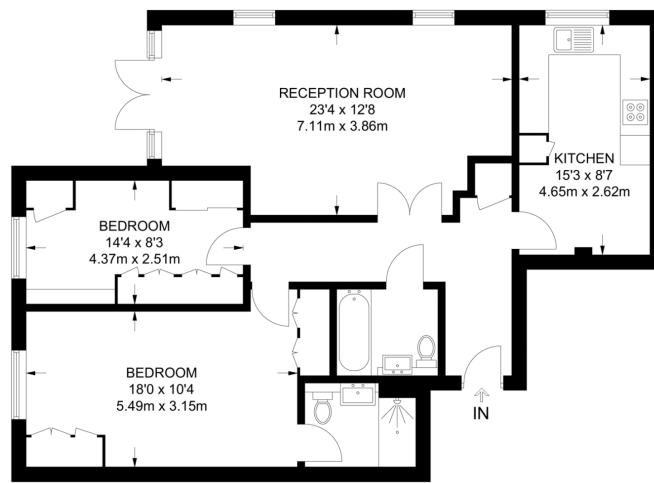
 2  2  1



A bright and spacious TWO DOUBLE BEDROOM TWO BATHROOM GROUND FLOOR APARTMENT WITH PRIVATE TERRACE AND ACCESS TO COMMUNAL GROUNDS situated in a popular purpose built block conveniently located for all local shopping and transport facilities. The property is being offered in excellent decorative order and benefits from: Security Entryphone System, Double Glazed Windows, Underfloor Heating, Reception Room With Access To Private Terrace & Communal Grounds, Fully Fitted Modern Kitchen, Bedroom One With En Suite Shower Room, Bedroom Two, Family Bathroom, Communal Grounds, Underground Parking For Two Cars. LONG LEASE

Key Features

- GROUND FLOOR APARTMENT WITH PRIVATE TERRACE
- TWO BATHROOMS
- FULLY FITTED MODERN KITCHEN
- UNDERGROUND PARKING FOR TWO CARS
- TWO DOUBLE BEDROOMS
- RECEPTION ROOM
- COMMUNAL GROUNDS
- LONG LEASE



GROUND FLOOR

**APPROXIMATE GROSS INTERNAL AREA
960 SQ FT / 89.2 SQ M**

This plan has been drawn for illustrative and identification purposes only.