

1 Lime Avenue Birmingham, B29 7AJ

2026-2027

£2300pcm

£460pppcm

£106.15 per person per week.

Fantastic refurbished 5 bed in great location - less than 5 minutes walk to university. Briefly comprising of modern open-plan kitchen and living space. Five good sized double bedrooms, 3 superb modern shower rooms. This property really is furnished to an excellent standard. Street parking available.

EPC rating - C

Council Tax band - B (students exempt)

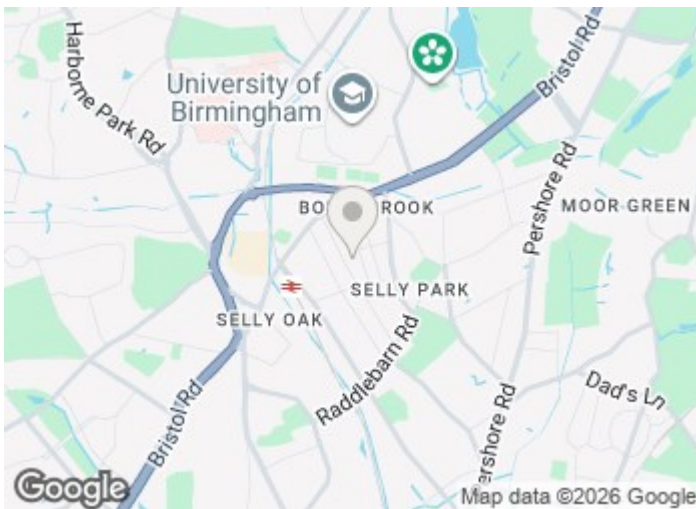
Term - 12 months

Deposit - £530.75 per person

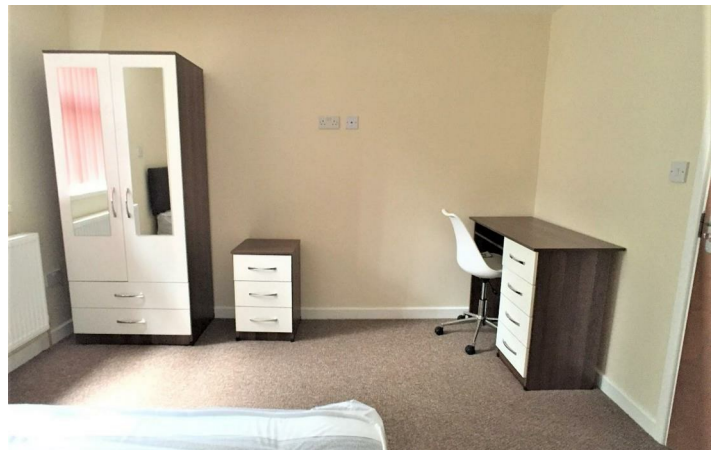
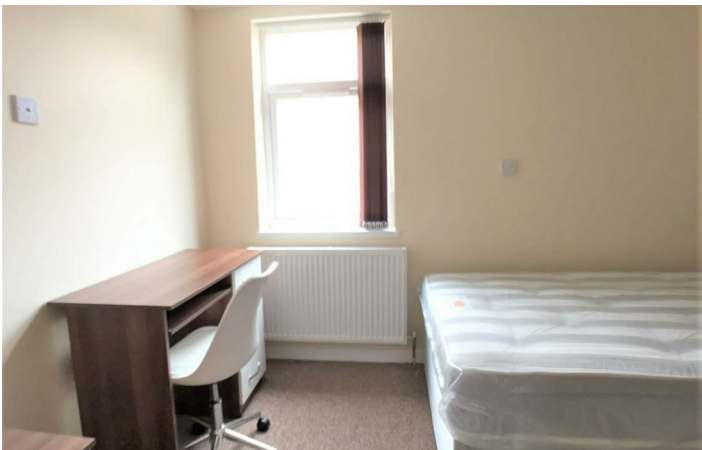
£2,300 Per Month

1 Lime Avenue

Birmingham, B29 7AJ



[Directions](#)



Floor Plan

These particulars, whilst believed to be accurate are set out as a general outline only for guidance and do not constitute any part of an offer or contract. Intending purchasers should not rely on them as statements of representation of fact, but must satisfy themselves by inspection or otherwise as to their accuracy. No person in this firm's employment has the authority to make or give any representation or warranty in respect of the property.



543 Bristol Road, Selly Oak, Birmingham B29 6AU. T: 0121 472 3331 Website: www.direct-housing.co.uk
E-mail: sellyoak@direct-housing.co.uk lettings@direct-housing.co.uk accounts@direct-housing.co.uk

