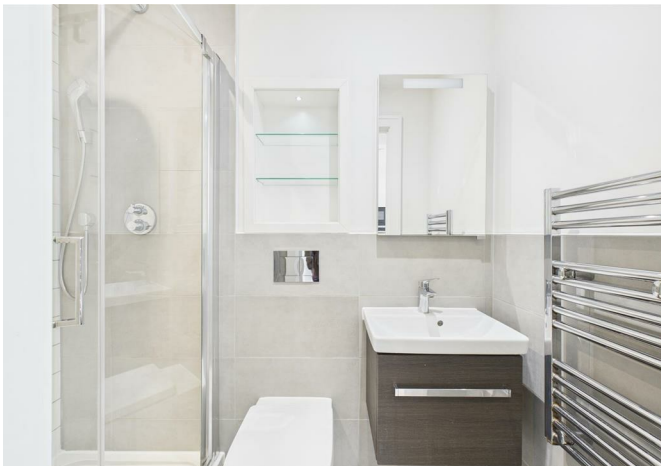




25323, Mercantile House, Uxbridge, UB8 1SG
£1,150 Per month



25323, Mercantile House, Uxbridge, UB8 1SG

£1,150 Per month

Modern Furnished Studio | Close to Uxbridge Station | Approx. 35 Mins to Central London.

Be the first to view this newly listed, fully furnished studio apartment, perfectly located just moments from Uxbridge Station and local supermarkets. Designed for comfort and convenience, the apartment features a washing machine & dryer, dishwasher, and ample built-in storage.

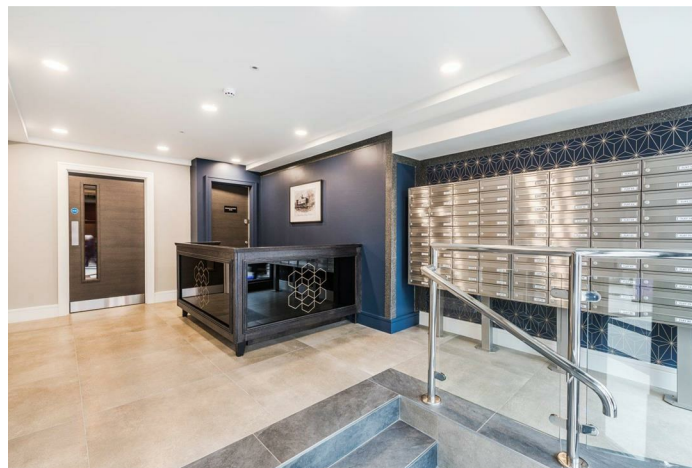
Enjoy peace of mind with CCTV security and professional management, ideal for busy professionals or students. With direct train links to Central London in approximately 35 minutes, this home offers an excellent blend of connectivity and lifestyle.

Photos show a very similar apartment in this building however the exact layout/floor/view may vary.

Description



Situation



Furnished

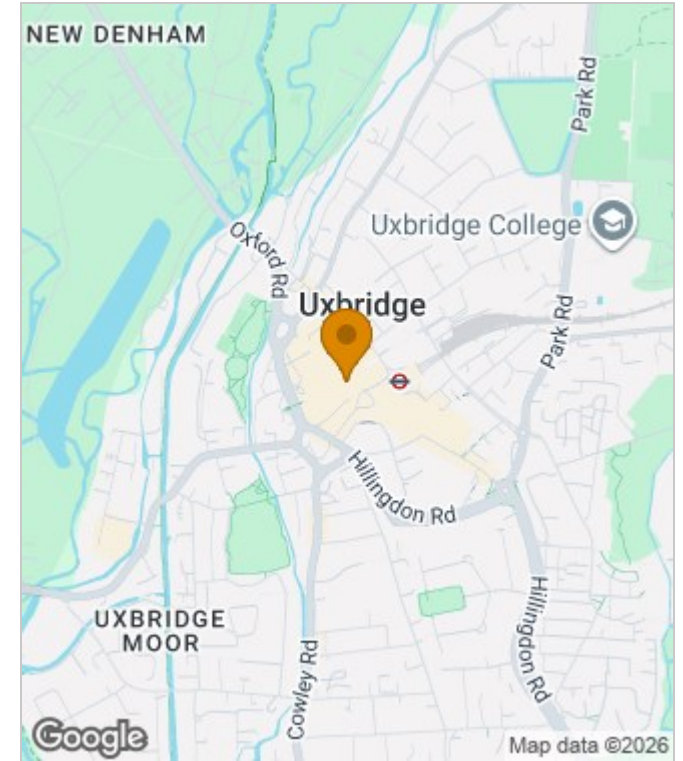
Council Tax Band: C

Available:

Floor Plans



Area Map



Energy Performance Graph

Energy Efficiency Rating		Current	Potential
Very energy efficient - lower running costs			
(92 plus) A			
(81-91) B			
(69-80) C			
(55-68) D		71	71
(39-54) E			
(21-38) F			
(1-20) G			
Not energy efficient - higher running costs			
England & Wales	EU Directive 2002/91/EC		

These particulars, whilst believed to be accurate are set out as a general outline only for guidance and do not constitute any part of an offer or contract. Intending purchasers should not rely on them as statements of representation of fact, but must satisfy themselves by inspection or otherwise as to their accuracy. No person in this firm's employment has the authority to make or give any representation or warranty in respect of the property.