



**Place Crescent, Waterloooville PO7 5UP**

**welcome to**

## **Place Crescent, Waterloo**

Well presented 3 bed end of terrace home at the end of a quiet road. Spacious lounge, modern kitchen/diner and conservatory. Two double bedrooms, a single and bathroom. Large wrap around garden, driveway parking and extension potential (STPP).

### **Entrance Porch**

Via front door. Door to lounge.

### **Lounge**

Double glazed bow window to front aspect. Stairs leading to first floor. Carpet flooring, radiator, closed fireplace with hearth and mantel over. Glazed door to kitchen/diner.

### **Kitchen / Diner**

Tiled floor, radiator, space for table and chairs. Wall mounted boiler. Part tiled walls to kitchen area, range of wall and base cupboards with work surface over and breakfast bar, incorporating sink unit with mixer tap over. Double glazed window to conservatory. Space for oven, washing machine and upright fridge/freezer. Double glazed door to conservatory.

### **Conservatory**

Double glazed to rear and side aspects with double glazed door leading to rear garden. Vinyl flooring, radiator, polycarbonate roofing.

### **First Floor Landing**

Doors to:

### **Bedroom One**

Double glazed window to front aspect. Built-in wardrobe with mirror fronted doors. Carpet flooring, radiator.

### **Bedroom Two**

Double glazed window to rear aspect. Carpet flooring, radiator. Built-in cupboard.

### **Bedroom Three**

Double glazed window to front aspect. Carpet flooring, radiator, built-in cupboard.

### **Bathroom**

Double glazed window to rear aspect. Suite comprising L-shaped bath with shower over, wash hand basin set over vanity unit and low level WC. Radiator.

### **Outside**

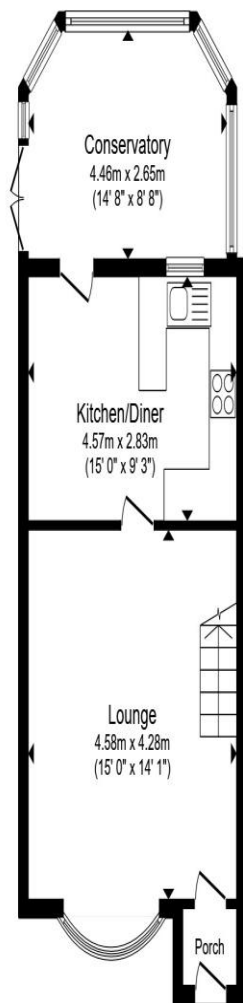
#### **Front**

Laid to lawn with pathway leading to front door. Off road parking. Gate leading to rear garden.

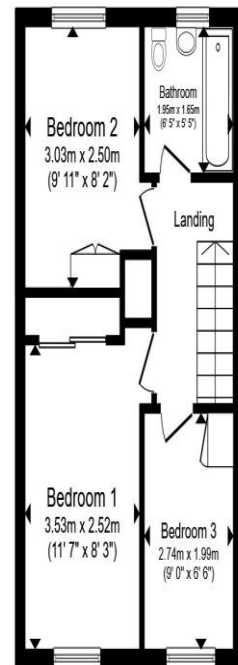
#### **Rear Garden**

Laid to lawn with mature shrubs and trees. Wooden shed.





**Ground Floor**



**First Floor**

Total floor area 80.0 m<sup>2</sup> (861 sq.ft.) approx

This floor plan is for illustrative purposes only. It is not drawn to scale. Any measurements, floor areas (including any total floor area), openings and orientation are approximate. No details are guaranteed, they cannot be relied upon for any purpose and they do not form part of any agreement. No liability is taken for any error, omission or misstatement. A party must rely upon its own inspection(s). Powered by [www.propertybox.io](http://www.propertybox.io)



**welcome to**  
**Place Crescent,**  
**Waterlooville**

- Quiet Location
- End of Terrace House
- Three Bedrooms
- Conservatory
- Large Garden

Tenure: Freehold EPC Rating: Awaited  
Council Tax Band: C

**£350,000**



**view this property online** [fox-and-sons.co.uk/Property/WLV109420](https://fox-and-sons.co.uk/Property/WLV109420)



Property Ref:  
WLV109420 - 0002

1. MONEY LAUNDERING REGULATIONS Intending purchasers will be asked to produce identification documentation at a later stage and we would ask for your co-operation in order that there is no delay in agreeing the sale. 2. These particulars do not constitute part or all of an offer or contract. 3. The measurements indicated are supplied for guidance only and as such must be considered incorrect. Potential buyers are advised to recheck measurements before committing to any expense. 4. We have not tested any apparatus, equipment, fixtures or services and it is in the buyers interest to check the working condition of any appliances. 5. Where an EPC, or a Home Report (Scotland only) is held for this property, it is available for inspection at the branch by appointment. If you require a printed version of a Home Report, you will need to pay a reasonable production charge reflecting printing and other costs. 6. We are not able to offer an opinion either written or verbal on the content of these reports and this must be obtained from your legal representative. 7. Whilst we take care in preparing these reports, a buyer should ensure that his/her legal representative confirms as soon as possible all matters relating to title including the extent and boundaries of the property and other important matters before exchange of contracts.

Fox & Sons is a trading name of Sequence (UK) Limited which is registered in England and Wales under company number 4268443, Registered Office is Cumbria House, 16-20 Hockliffe Street, Leighton Buzzard, Bedfordshire, LU7 1GN. VAT Registration Number is 500 2481 05.

  
fox & sons



**023 9226 2447**



[Waterlooville@fox-and-sons.co.uk](mailto:Waterlooville@fox-and-sons.co.uk)



81B London Road, WATERLOOVILLE,  
Hampshire, PO7 7ES



**[fox-and-sons.co.uk](https://fox-and-sons.co.uk)**