



**JOWEBSTER**

*Apartment C72*  
The Montevetro Building, SW11

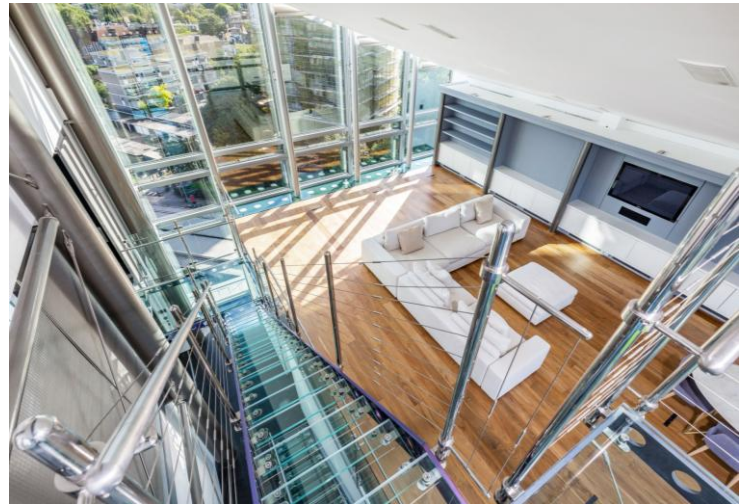
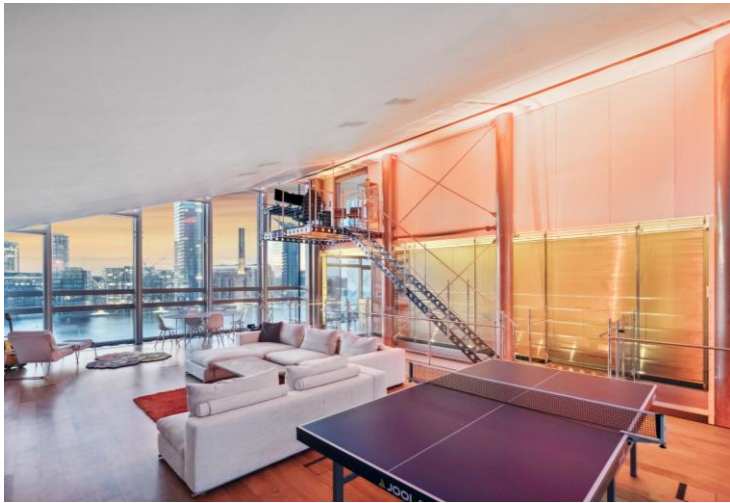


### Property Attributes

- Triple height ceilings
- Extensive outside space
- Master bedroom with en suite bathroom and balcony
- Second master bedroom with en suite bathroom and balcony
- Third Bedroom with en suite shower room and terrace
- Home office with en-suite terrace
- Home cinema/Mood lighting/Underfloor heating/Comfort cooling
- Two covered ground floor parking spaces
- Tennis court, Gym, Sauna, 24/7 security and concierge, gated entry with CCTV
- An additional car space and storage unit available for an additional £150,000

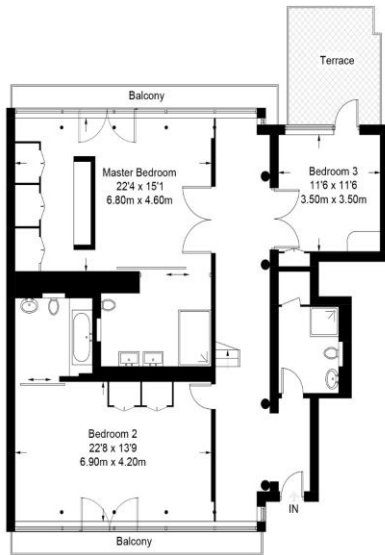
### Terms

- Price: £4,850,000
- Borough: London Borough of Wandsworth
- Tenure: Share of Freehold (approx 971 years remaining)
- Service Charge: Approx. £45,504 per annum
- Ground Rent: Peppercorn
- Council Tax Band: Band H

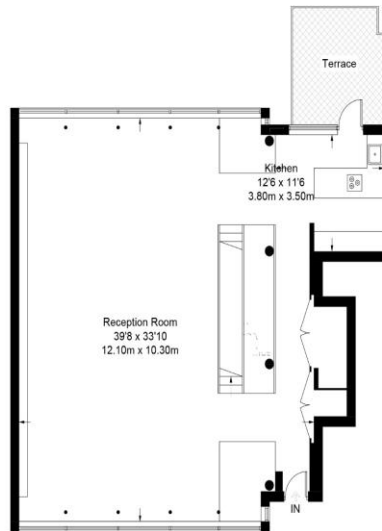


# Montevetro Building

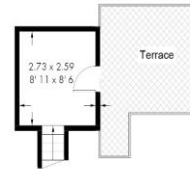
Approximate Gross Internal Area = 2950 sq ft / 274 sq m  
(Including Void)



Seventh Floor = 1437 sq ft / 133.5 sq m



Eighth Floor = 1448 sq ft / 134.5 sq m



Ninth Floor = 86 sq ft / 8 sq m

Not to scale, for guidance only and must not be relied upon as a statement of fact.  
All measurements and areas are approximate only and have been prepared in accordance with the current edition of the RICS Code of Measuring Practice.

+44 (0) 20 7349 7055  
sales@jowebster.com

### Misdescription Act

We wish to advise prospective purchasers that these sales particulars are believed to be correct, but their accuracy is in no way guaranteed, nor do they form any part of contract. We have not carried out a detailed survey nor tested the services, appliances or specific fittings. Measurements are approximate.