



**Guide Price**

**£750,000**

**Freehold**

4x  3x  2x 

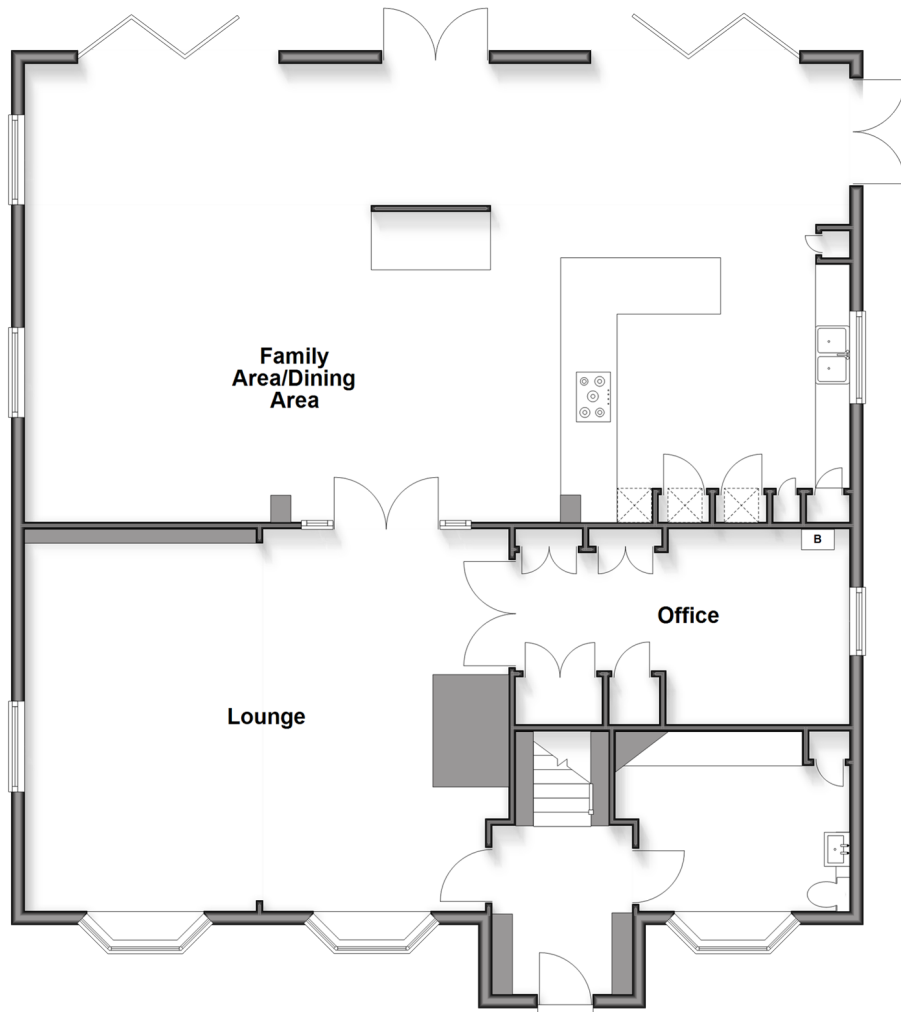
**Maidstone Road,  
Lenham, Maidstone,  
Kent, ME17**

**OVER 60?**

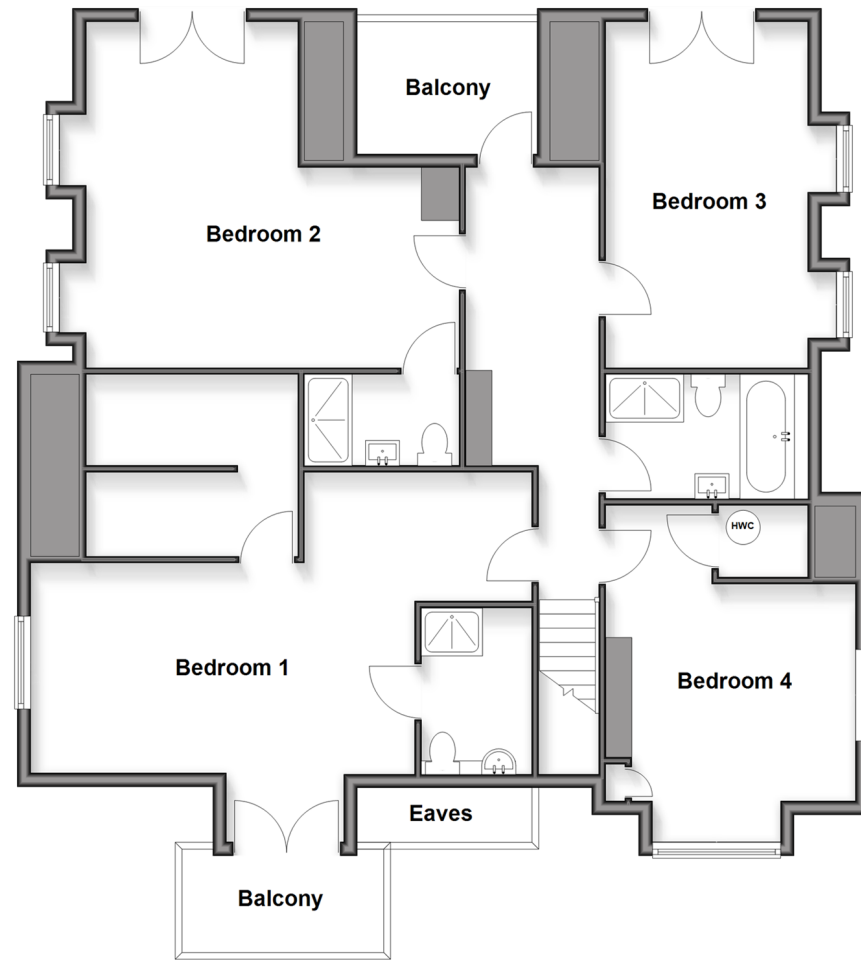
Secure this property  
for up to **59% less!**

*Wards*  
Helping you move forwards

**Ground Floor**  
Approx. 153.3 sq. metres (1649.9 sq. feet)



**First Floor**  
Approx. 123.6 sq. metres (1330.0 sq. feet)



## Accommodation

### GROUND FLOOR

Entrance Hallway

Cloakroom/Utility

Office: 21'1 x 11'3 (6.43m x 3.43m)

Kitchen/Family/Dining Area: 40'1 x 28'4 (12.23m x 8.64m)

Lounge: 23'11 x 21'6 (7.29m x 6.56m)

### FIRST FLOOR

Landing

Bedroom 4: 20'4 x 19'8 (6.20m x 6.00m)

Bathroom

Bedroom 3: 19'10 x 13'12 (6.05m x 4.27m)

Bedroom 2: 21'4 x 20'1 (6.51m x 6.13m)

En-suite Shower Room

Bedroom 1: 24'7 x 19'8 (7.50m x 6.00m)

Walk-in-wardrobe

En-suite Shower Room

### OUTSIDE

Balconies

Driveway

Front and Rear Gardens

Double Carport



## Main features

- Front and Rear Balconies
- Walk-in-wardrobe and en-suite
- Heavily extended allowing for an open plan design living space
- Well-presented accommodation with large kitchen to the rear with separate utility space
- Parking for multiple cars with large driveway and double car port to the rear



### Nearest Schools

Primary Schools: Lenham Primary 0.4 miles, Platts Heath Primary 2.0 miles, Harrietsham C of E Primary 2.4 miles  
Secondary Schools: Swadelands School 0.0 miles, Heath Farm School 3.8 miles, Goldwyn Community Special School 7.3 miles



### Transport Information

Train Stations: Lenham 0.8 miles, Harrietsham 2.0 miles, Hollingbourne 5.1 miles



### Address

Maidstone Road, Lenham, Maidstone, Kent, ME17



### Directions

For directions to this property please contact us.



*Wards*  
Helping you move forwards

Call Headcorn Branch 01622 890435 ■ [wardsof Kent.co.uk](http://wardsof Kent.co.uk)



- Legal advice should be taken to verify fixtures/fittings, planning, alterations and/or lease details
- Appliances & services are untested, dimensions are approximate and floor plans are not to scale
- Through a Homewise Home For Life Plan people aged 60+ can secure this property for up to 59% less, by purchasing a Lifetime Lease



EPC RATING  
CURRENT: C(76) POTENTIAL: C(80)

12327517/20260218/AJF/KMC