

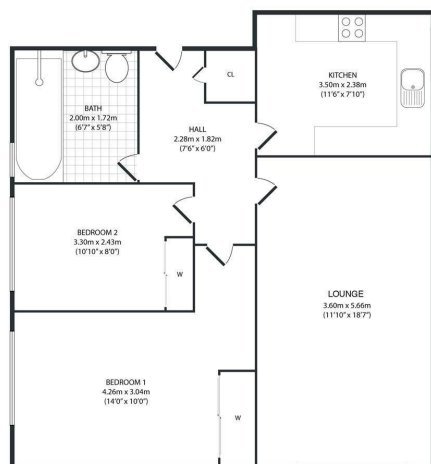


11 Radford Court, Billericay, Essex, CM12 0AB

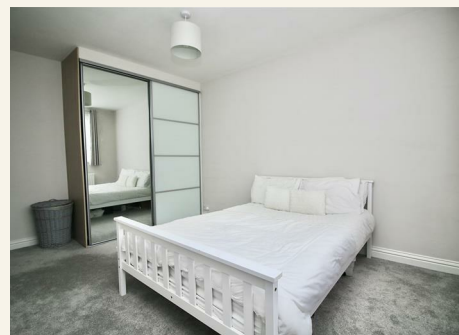
Offers in excess of Offers In Excess Of £290,000

11 Radford Court, Billericay, Essex, CM12 0AB
Offers In Excess Of £290,000

****SALE AGREED BY ASHTON WHITE****A spacious two bedroom first floor flat conveniently located close to Billericay train station and High Street. This well-presented property offers a hallway with built-in storage and doors leading to the living accommodation which includes; large lounge, fitted kitchen with appliances, two double bedrooms with built-in wardrobes and a modern fitted bathroom. The flat also benefits from having double glazed windows and gas central heating. The block stands in communal gardens and grounds, with a store shed and garage located in a block. ****NO ONWARD CHAIN****



Total area : approx. 57.3 sq. meters (616.7sq. feet)
This floor plan is for illustrative purposes and layout guidance only. It is not drawn to scale.
Dimensions should not be used for carpet or flooring sizes and are not intended to form part of any contract.



- SALE AGREED BY ASHTON WHITE
- LARGE LOUNGE
- SECOND DOUBLE BEDROOM WITH BUILT-IN WARDROBES
- FITTED KITCHEN
- GARAGE AND PERMIT PARKING
- ENTRANCE HALL WITH BUILT-IN STORAGE
- GOOD-SIZE MAIN BEDROOM WITH BUILT-IN WARDROBES
- MODERN BATHROOM
- GAS CENTRAL HEATING
- CLOSE TO STATION AND HIGH STREET

VIEWING: Strictly by prior arrangement with Ashton White Estate Agents.

THESE PARTICULARS DO NOT CONSTITUTE ANY OFFER OF CONTRACT EITHER DIRECT OR COLLATERAL NOR ARE THEY TO BE ACTED UPON AS REPRESENTATIONS. ALL INTERESTED PARTIES MUST THEMSELVES VERIFY THE ACCURACY OF THESE PARTICULARS.



140 High Street
Billericay
Essex
CM12 9DF
01277 659003
admin@ashtonwhite.co.uk
<https://www.ashtonwhite.co.uk>