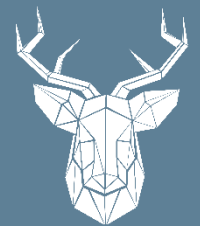




Jordan Close

Cowes

£525,000



Lancasters

A beautifully maintained 3-bedroom bungalow positioned in a quiet cul-de-sac just moments from the sea, in one of the area's most sought-after locations. The property is presented in immaculate condition throughout and briefly comprises three bedrooms, a conservatory overlooking stunning, well-kept gardens, and the benefit of a garage and off-road parking. Whether you are looking to downsize, retire, or simply secure a slice of coastal living, this property ticks all the boxes. Early viewing is strongly recommended.



3 Bedroom Detached Bungalow

Hall

A bright and spacious entrance hall - with accommodation off.

Sitting Room 17' 10" x 11' 10" (5.43m x 3.61m)

A naturally bright reception with triple aspect. Modern multifuel burner. Oak flooring.

Kitchen 9' 10" x 13' 9" (3.0m x 4.2m)

A modern fitted kitchen with a generous amount floor and wall mounted storage units. Integrated induction hob and cooker. Space and plumbing for additional white goods. Gas boiler.

Conservatory/ Garden Room 13' 1" x 11' 6" (4.0m x 3.5m)

A stunning addition with newly installed warm roof and skylights. Views on all sides and french style doors onto the garden.

Bedroom 1 13' 9" x 12' 0" (4.2m x 3.65m)

A large rear aspect double bedroom.

Bedroom 2 11' 6" x 9' 10" (3.5m x 3.0m)

An equally spacious rear aspect double bedroom.

Bedroom 3 7' 6" x 6' 6" (2.28m x 1.97m)

Single guest bedroom or study.

Bathroom

Panelled bath and shower over with screen. vanity basin. Fully tiled.

W/C

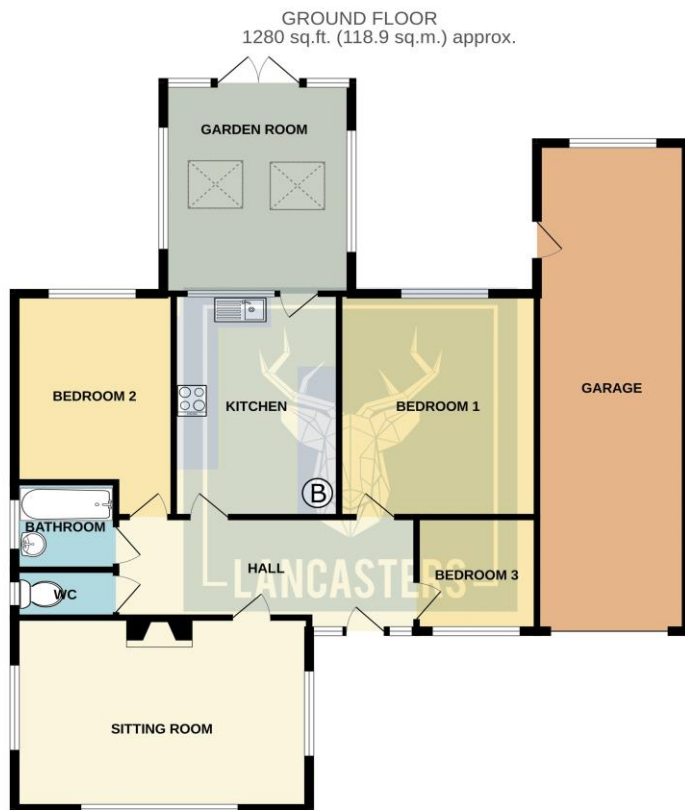
Separate w/c .

Garage 30' 0" x 8' 10" (9.14m x 2.7m)

A huge single garage, with vehicle access to the front and rear door onto the garden and patio. A fantastic opportunity to perhaps combine this space and expand the internal bungalow accommodation - with the necessary permissions of course!.

Outside

The property sits centrally within a generous East to Westerly plot. Lots of space to the front for off street parking and garage access. - To the rear is a large sunny aspect garden with lawn, mature planting, patio and all framed the back with a view onto a pretty copse. Bird song and wild life are ever present in this much loved garden.



TOTAL FLOOR AREA: 1280 sq.ft. (118.9 sq.m.) approx.
Whilst every attempt has been made to ensure the accuracy of the floorplan contained here, measurements of doors, windows, rooms and any other items are approximate and no responsibility is taken for any error, omission or mis-statement. This plan is for illustrative purposes only and should be used as such by any prospective purchaser. The services, systems and appliances shown have not been tested and no guarantee as to their operability or efficiency can be given.
 Made with Metropix ©2020

Want more photos and a video? Scan here



Lancasters Estate Agents
 Osborne Court | The Parade | Cowes | Isle of Wight | PO31 7QS
 01983 209020 Homes@Lancasters.org

Tenure: Freehold
 Council: D
 EPC: D

These sales particulars do not form part of any contract. The agent has not undertaken any form of survey on the property and has not checked any services. If you decide to purchase this, or any other property, we advise you undertake your own enquiries via your separately appointed solicitor and surveyor.